



Byron Street

Poets Corner, Northampton

oriordanbond
SALES & LETTINGS



Byron Street

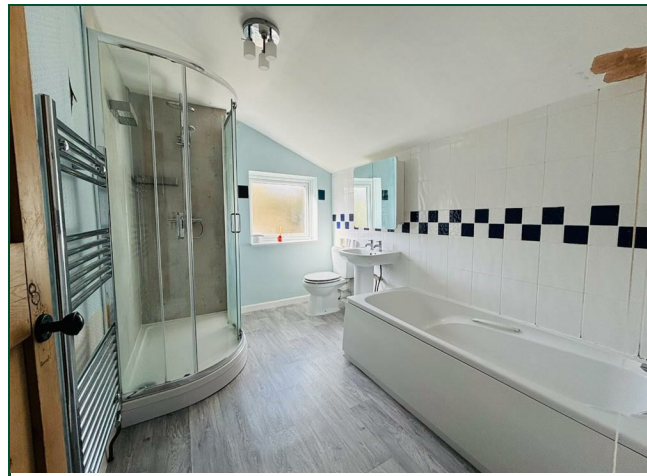
Poets Corner
NN2 7JE

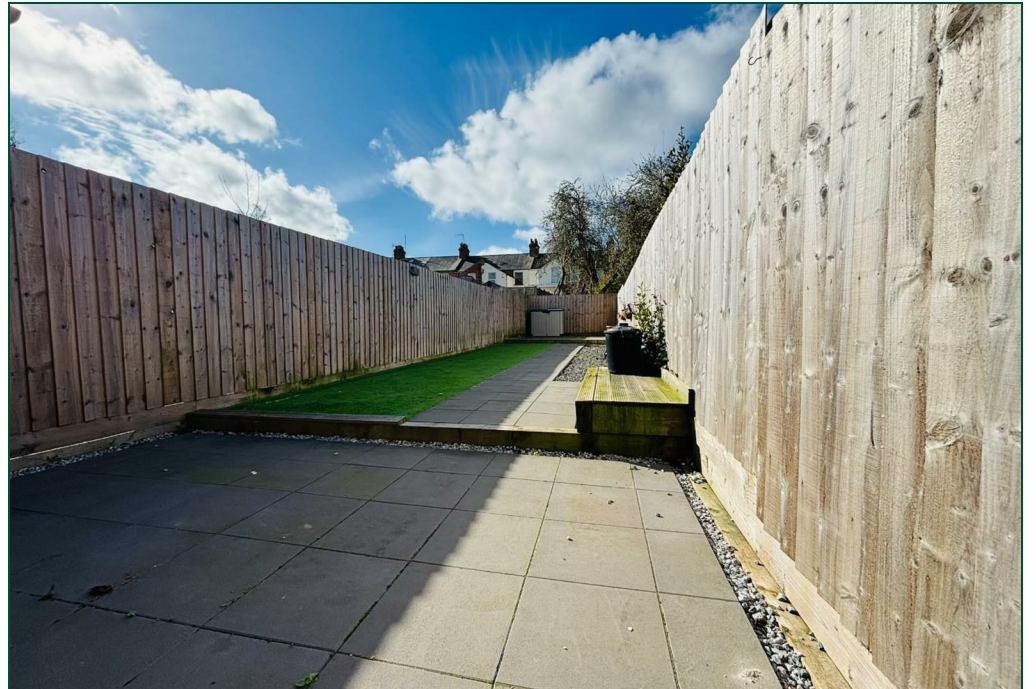
Price
£210,000

O'Riordan Bond is delighted to offer for sale this well presented two double bedroom terraced property located within the much sought after residential area of Poets Corner within Kingsley.

The accommodation comprises entrance hall, open plan sitting/dining room with double doors onto the garden, re-fitted kitchen with integrated appliances, utility room, two good size first floor bedrooms and a re-fitted four-piece bathroom. Outside is a good size low maintenance south facing rear garden. Further benefits include gas radiator heating, uPVC double glazing and offered for sale with no onward chain for a quick sale. (B/781/M)

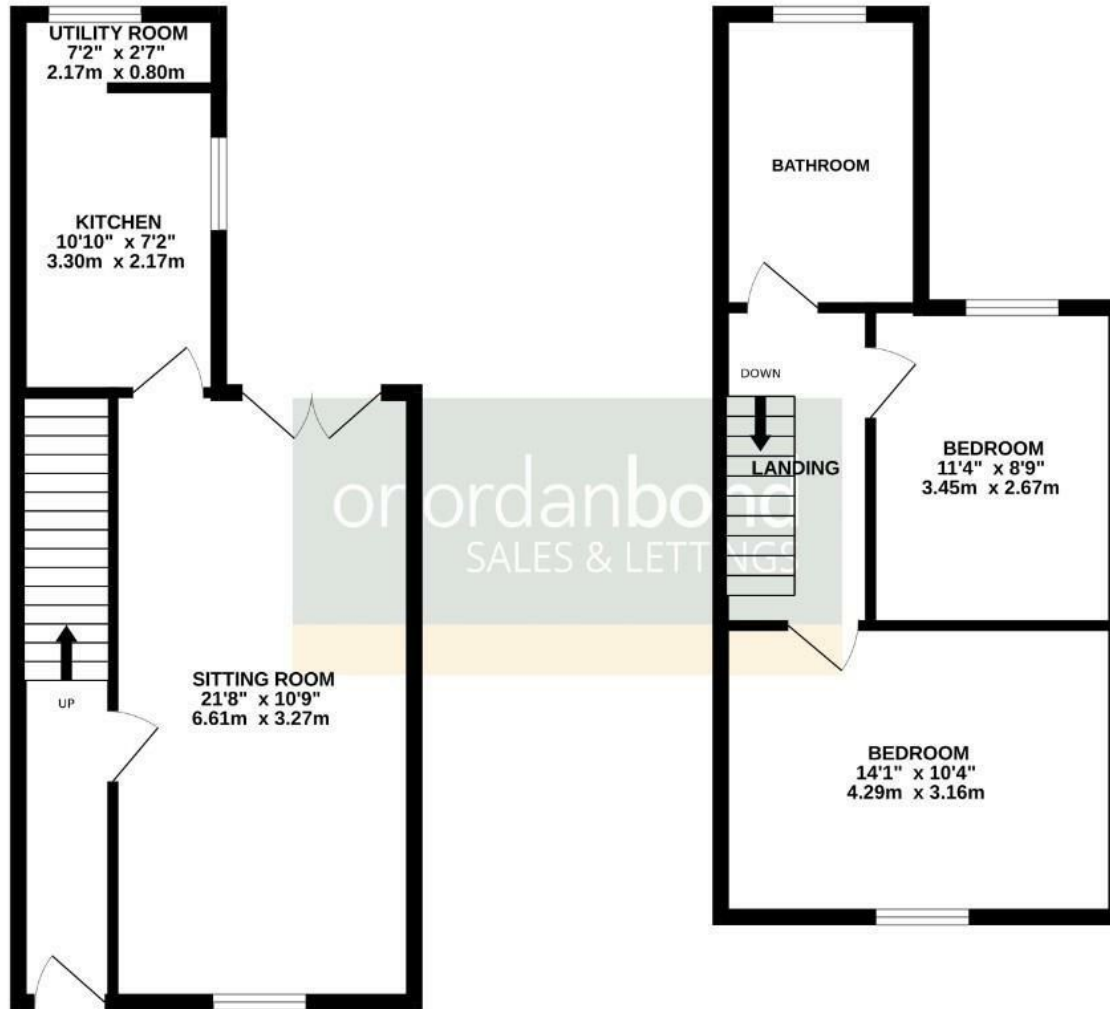
- Two double bedroom terraced home
- Re-fitted kitchen
- Re-fitted four-piece bathroom
- Gas radiator heating
- Low maintenance south facing garden
- No onward chain





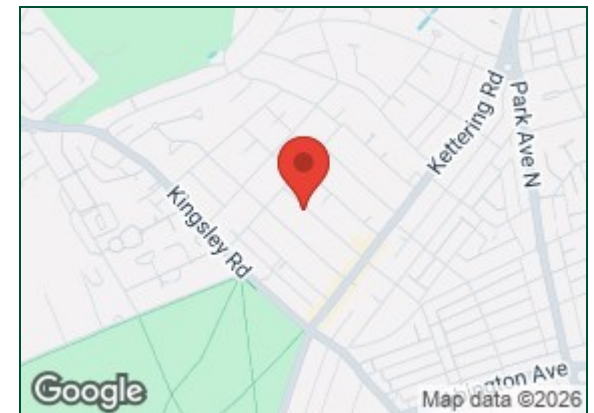
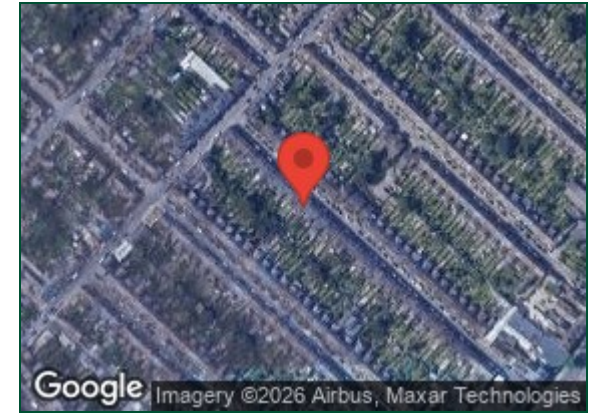
GROUND FLOOR

1ST FLOOR



TOTAL FLOOR AREA : 781 sq.ft. (72.6 sq.m.) approx.

Whilst every attempt has been made to ensure the accuracy of the floorplan contained here, measurements of doors, windows, rooms and any other items are approximate and no responsibility is taken for any error, omission or mis-statement. This plan is for illustrative purposes only and should be used as such by any prospective purchaser. The services, systems and appliances shown have not been tested and no guarantee as to their operability or efficiency can be given.
Made with Metropix ©2025



Additional information

- Council Tax Band: B
- Energy Efficiency Rating: D

Viewing

Viewing strictly by appointment – details below

Disclaimer

O’Riordan Bond Estate Agents Limited has not tested apparatus, equipment, fittings or services and so cannot verify they are in working order. The buyer is advised to obtain verification from their solicitor or surveyor.

O’Riordan Bond Abington Sales

01604 639007

abington@oriordanbond.co.uk

