



WOODSTOCK GROVE, W12

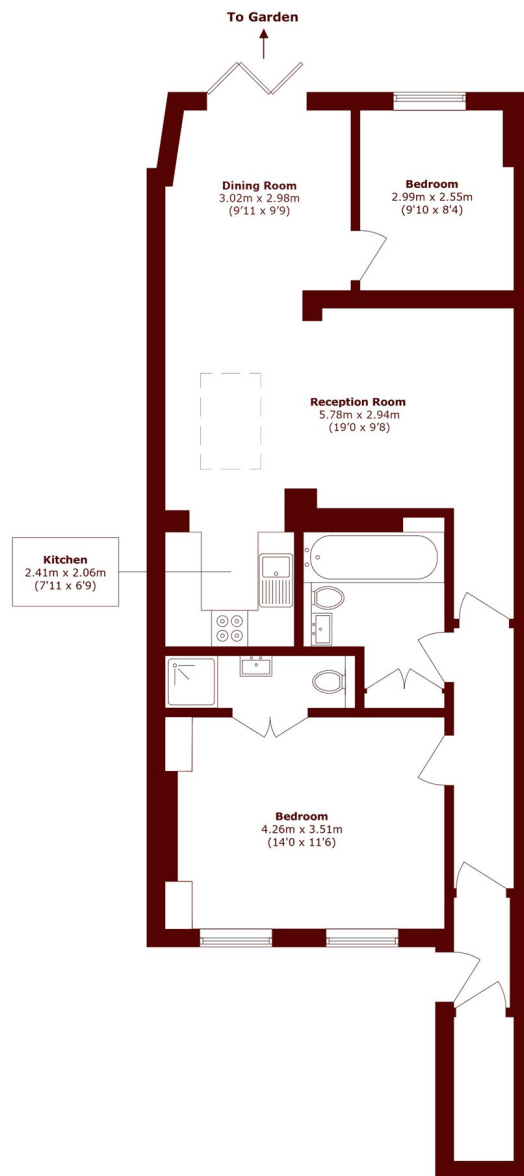
£735,000

This modern two bedroom, two bathroom garden flat enjoys a spacious open plan living and dining area. French doors adjacent to the dining area open to a spacious private garden patio, making it a wonderful home to

Two Bedrooms
Two Bathrooms
Lower Ground Floor

Private Garden
No Onward Chain
Westfield Shopping Centre

STEP INSIDE WOODSTOCK GROVE



Total area (approx.): 82.0 sq. m (882.6 sq. ft)

Brook Green
020 7605 7765

Energy Rating: We aim to make our particulars both accurate and reliable. However, they are not guaranteed; nor do they form part of an offer or contract. If you require clarification on any points then please contact us, especially if you're traveling some distance to view. Please note that appliances and heating systems have not been tested and therefore no warranties can be given as to their good working order

**MARSH &
PARSONS**