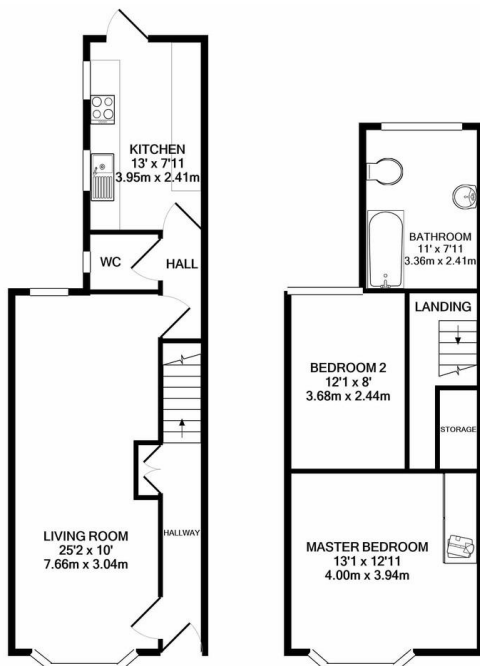




TO LET

2 Bed Mid Terraced House in Beaconsfield Road, Leicester, LE3 0FE
£950 pcm

A very well presented bay fronted mid terrace property to rent in the West End of Leicester. The property is available unfurnished and is available as a professional let. The accommodation comprises entrance hall, large reception room, kitchen, ground floor W.C, landing to two bedrooms and bathroom upstairs and pleasant yard to the rear. Sorry, pets will not be considered for this property. For more info or to view call Phillips George on 01162168178.

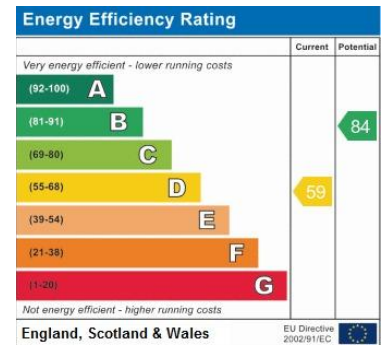


GROUND FLOOR
APPROX. FLOOR
AREA 452 SQ.FT.
(42.0 SQ.M.)

1ST FLOOR
APPROX. FLOOR
AREA 406 SQ.FT.
(37.7 SQ.M.)

PHILLIPS GEORGE LTD

TOTAL APPROX. FLOOR AREA 858 SQ.FT. (79.7 SQ.M.)
Whilst every attempt has been made to ensure the accuracy of the floor plan contained here, measurements of doors, windows, rooms and any other items are approximate and no responsibility is taken for any error, omission, or mis-statement. This plan is for illustrative purposes only and should be used as such by any prospective purchaser. The services, systems and appliances shown have not been tested and no guarantee as to their operability or efficiency can be given
Made with Metropix ©2020



Address:
36 Beaconsfield Road LE3 0FE

- Two Double Bedrooms
- Bay Fronted
- Professional Let
- Unfurnished
- Permit Parking
- Close To City Centre
- Well Presented Throughout
- Upstairs Bathroom

Agents Note: Whilst every care has been taken to prepare these sales particulars, they are for guidance purposes only. All measurements are approximate are for general guidance purposes only and whilst every care has been taken to ensure their accuracy, they should not be relied upon and potential buyers are advised to recheck the measurements.

