



PCM
£995 PCM
12 Warwick Place
Leamington Spa, CV32 5BJ

PROPERTY SUMMARY

GAS & WIFI INCLUDED!! A modern, refurbished two bedroom two bathroom top floor apartment close to the town centre. The property has been finished to a great standard and comprises a lounge, Fitted kitchen with appliances, two double bedrooms both with built in wardrobes and ensuites. The property benefits from a communal laundry room. Available from 10th December.

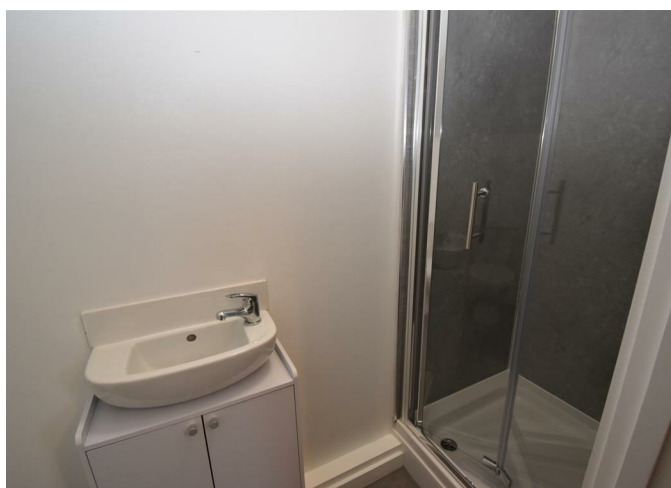
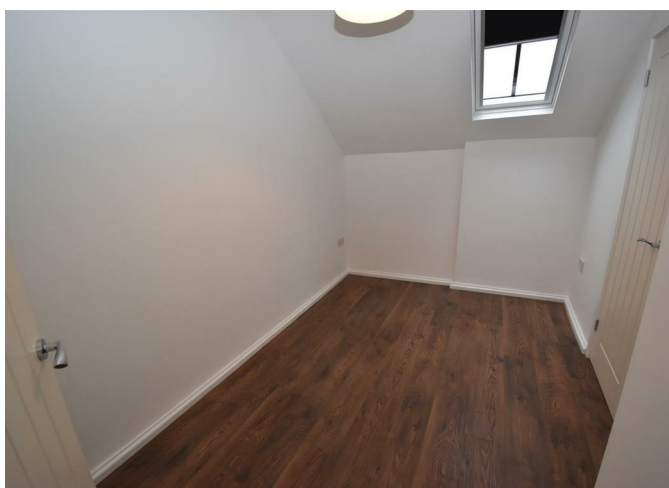
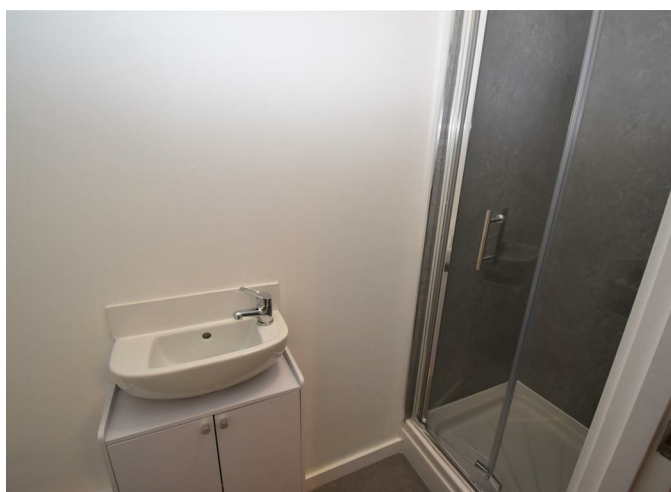
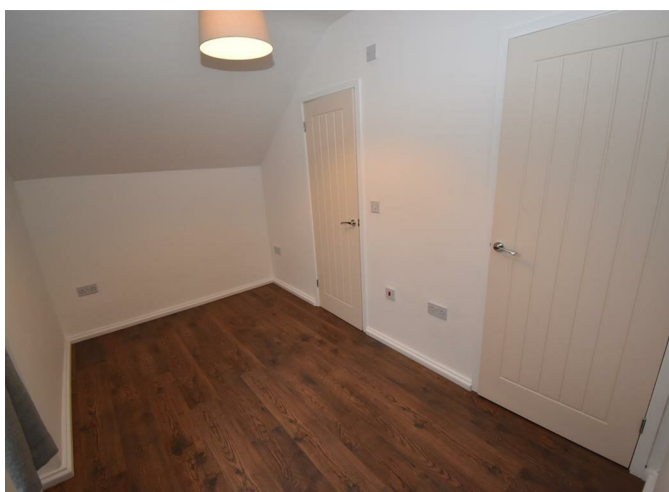
2



2



1



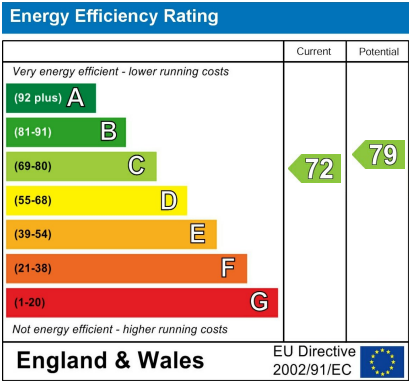
2

2

1







Agents Note: Whilst every care has been taken to prepare these particulars, they are for guidance purposes only. All measurements are approximate and are for general guidance purposes only and whilst every care has been taken to ensure their accuracy, they should not be relied upon and potential buyers/tenants are advised to recheck the measurements



OFFICE ADDRESS
8a Regent Street
Leamington Spa
Warwickshire
CV32 5HO

OFFICE DETAILS
01926 354 400
leamington@handlesproperty.co.uk