



# ASPIRE

— TO MOVE —



## Norfolk Crescent, Bath, BA1

Video and physical viewing available. Ground floor two bedroom apartment located on Norfolk Crescent, Bath. Available unfurnished from the 15th May.

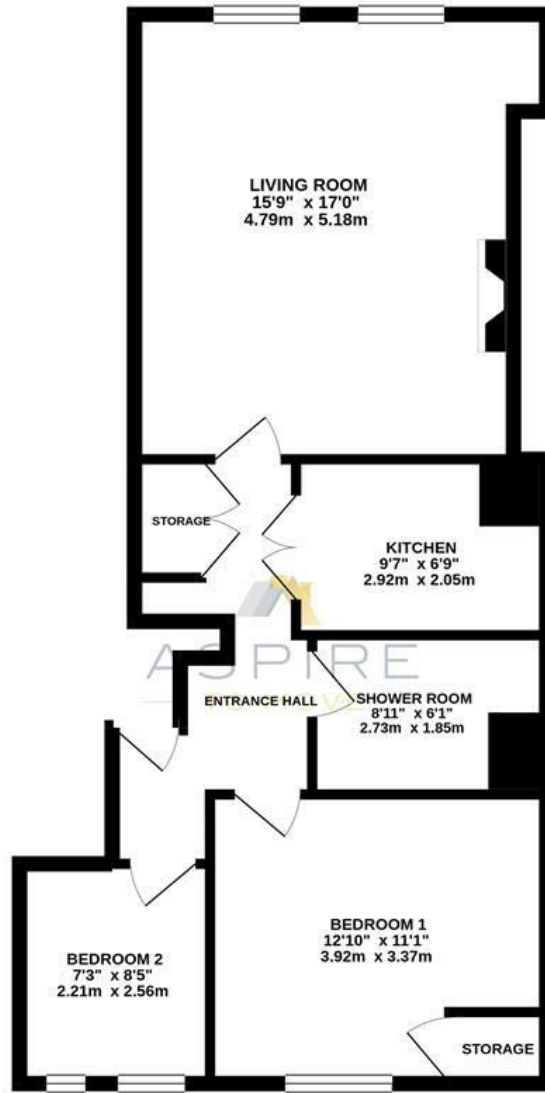
Norfolk Crescent is located to the South West of Bath city centre and enjoys level access to local amenities such as Sainsbury's, 0.2 miles away and bars/restaurants 0.3 miles away. In front of Norfolk Crescent is a large open area perfect for relaxing or catching up with friends.

- Two bedrooms
- Norfolk Crescent
- Available 15th May
- Unfurnished
- Close to local amenities
- Video viewing available
- Council tax band B
- Holding deposit £345

**£1,495 Per month**

# Floor Plans

GROUND FLOOR  
641 sq.ft. (59.6 sq.m.) approx.

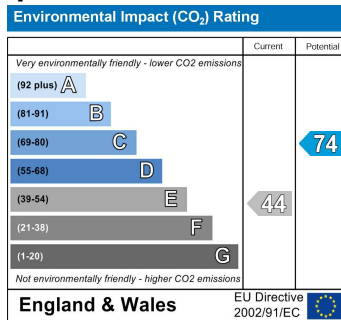
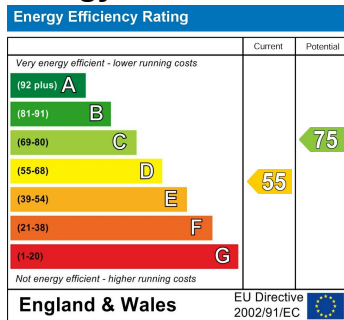


NORFOLK CRESCENT, BATH, BA1

TOTAL FLOOR AREA: 641 sq.ft. (59.6 sq.m.) approx.

Whilst every attempt has been made to ensure the accuracy of the floorplan contained here, measurements of doors, windows, rooms and any other items are approximate and no responsibility is taken for any error, omission or mis-statement. This plan is for illustrative purposes only and should be used as such by any prospective purchaser. The services, systems and appliances shown have not been tested and no guarantee as to their operability or efficiency can be given.  
Made with Metropix ©2020

## Energy Performance Graph



These particulars, whilst believed to be accurate are set out as a general outline only for guidance and do not constitute any part of an offer or contract. Intending purchasers should not rely on them as statements of representation of fact, but must satisfy themselves by inspection or otherwise as to their accuracy. No person in this firm's employment has the authority to make or give any representation or warranty in respect of the property.