



Allsop Place, NW1

£325,000

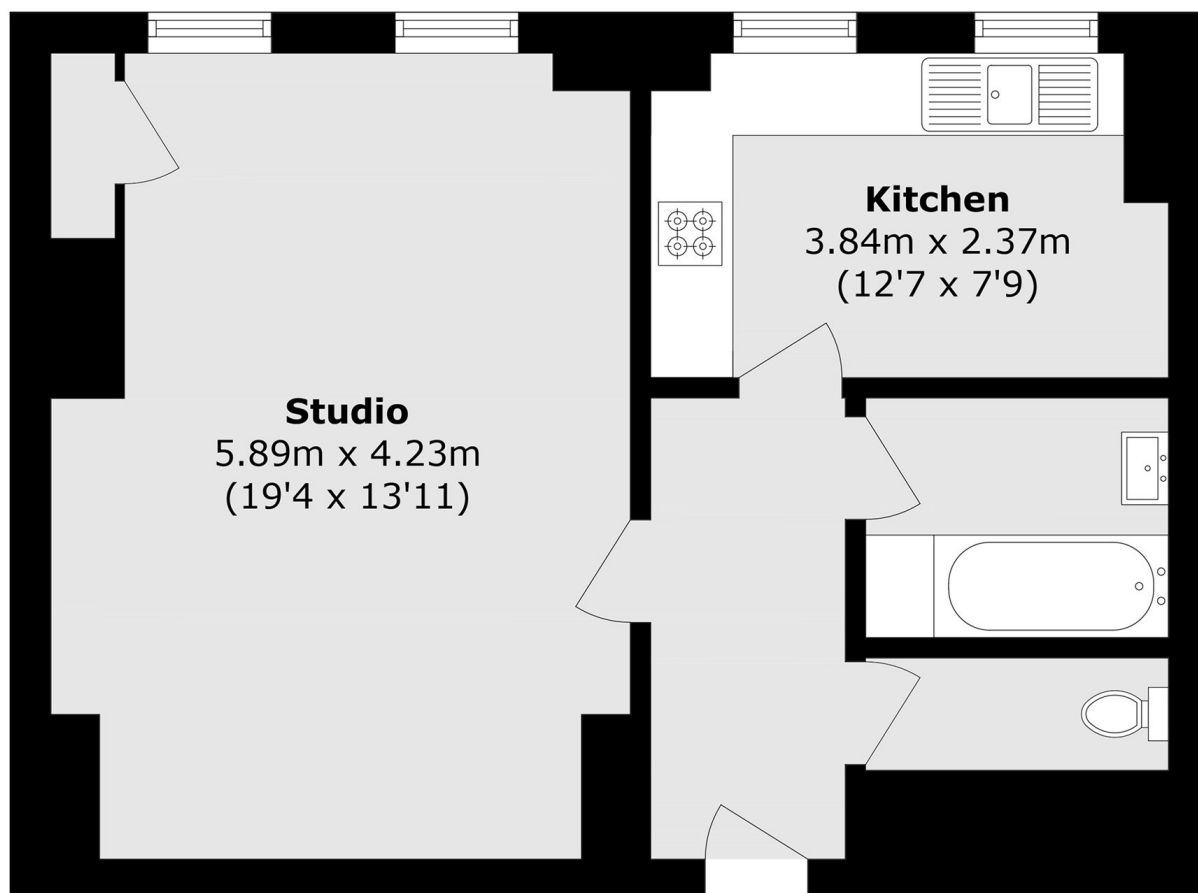
A studio apartment with a remaining lease of 33 years. Requires full modernisation and subject to the necessary consents may offer potential to convert to a one bedroom flat.

Located between Marylebone High Street and Regents Park, adjacent to Baker Street Station.

Features

Lease 99 Years From Dec 1960
Two Passenger Lifts
Day Concierge
Requires Updating
Blue Plaque Building
517 Sq Feet

Allsop Place, London, NW1



Total area (approx.): 48.1 sq. m (517.7 sq. ft)