



## Sylvester Road, N2

### £575,000

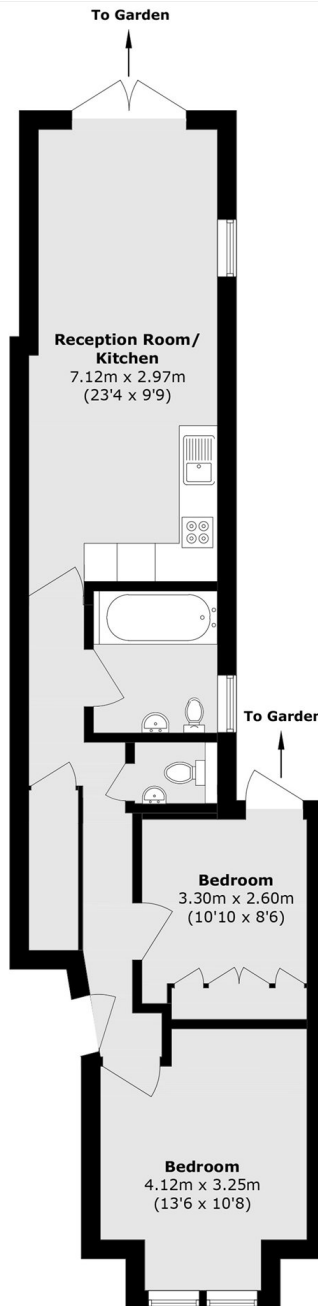
Offered on a chain free basis is this two bedroom garden flat situated on the ground floor of a converted terraced house. This property benefits from an immaculate finish throughout, and access out to a south facing private garden

Located a short distance away is the North Circular (A406) allowing swift access to North and East London, in addition to being walking distance of East Finchley underground station and the many amenities of East Finchley high Road.

### Features

- Two Bedrooms
- Chain Free
- Ground Floor
- Private Garden
- Immaculate Condition
- Guest WC

# Sylvester Road, London, N2



Total area (approx.): 57.2 sq. m (615.7 sq. ft)