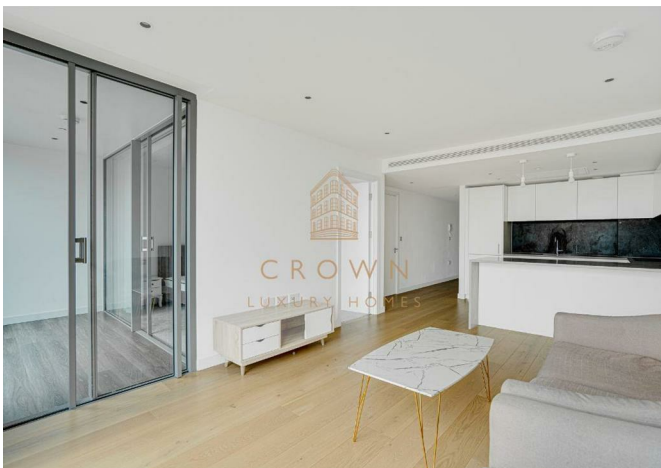


Apartment 1809 Landmark Pinnacle 10 Marsh Wall, London, E14 9TN
£3,000



Apartment 1809 Landmark Pinnacle 10 Marsh Wall, London, E14 9TN

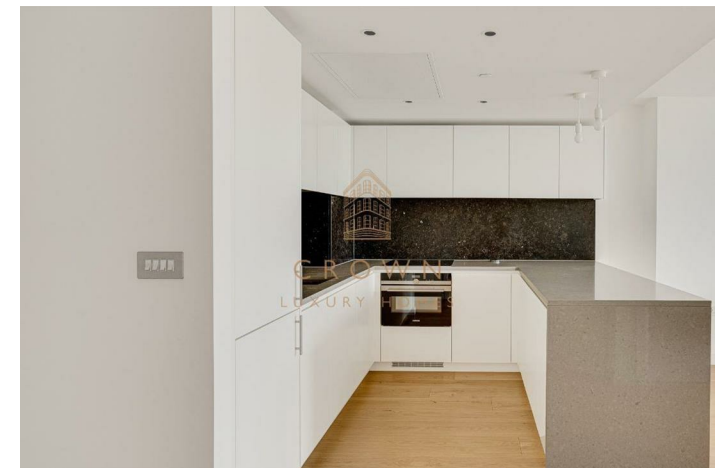
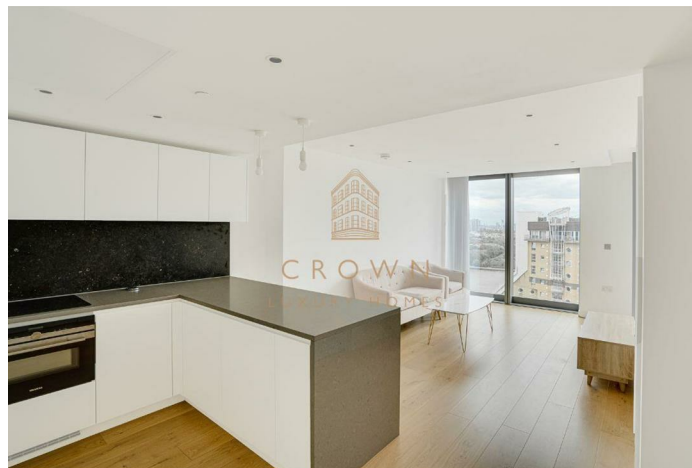
£3,000

Available in July | WeChat: CLH-Consultant | Views of River Thames | Winter Garden | 24/7 Concierge | Gym | Cinema Room | Virtual Golf Room | Business Lounges | 75th Floor Roof Terrace | 56th Floor Lounges | Furnished.

Description

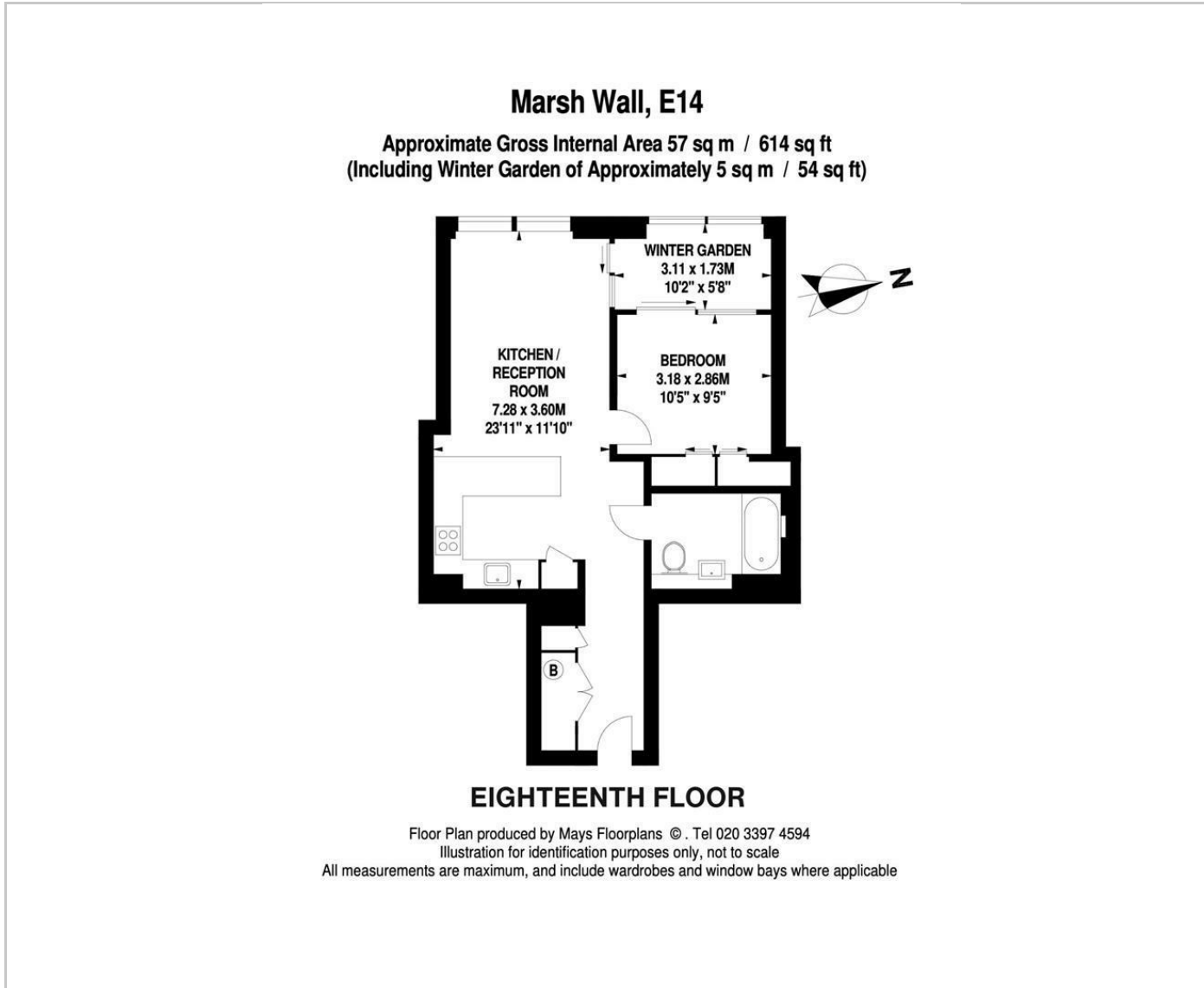


Situation

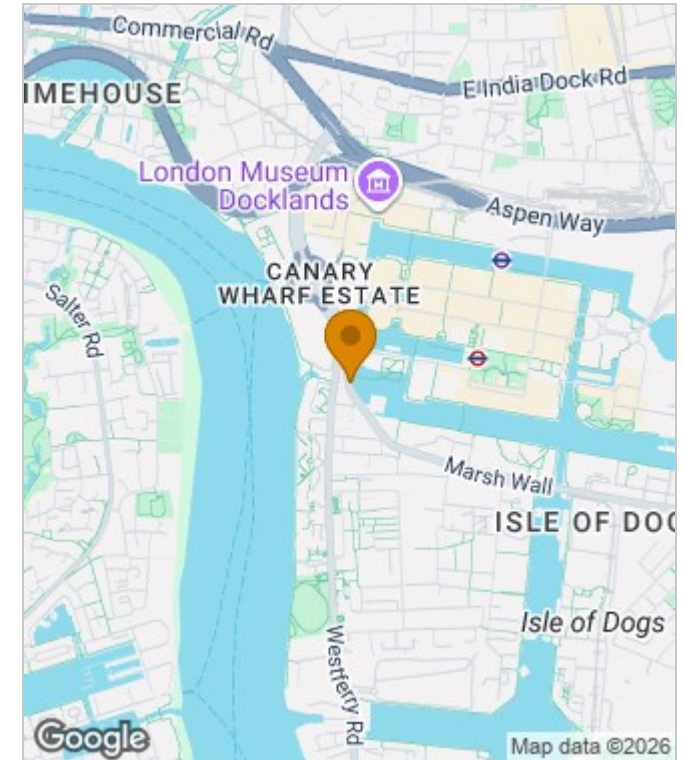


Furnished
Council Tax Band: E
Available: 20th July 2026

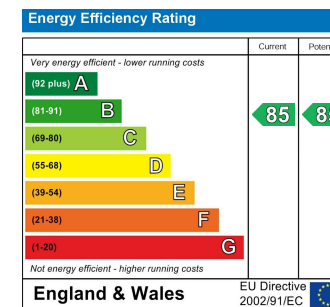
Floor Plans



Area Map



Energy Performance Graph



These particulars, whilst believed to be accurate are set out as a general outline only for guidance and do not constitute any part of an offer or contract. Intending purchasers should not rely on them as statements of representation of fact, but must satisfy themselves by inspection or otherwise as to their accuracy. No person in this firm's employment has the authority to make or give any representation or warranty in respect of the property.