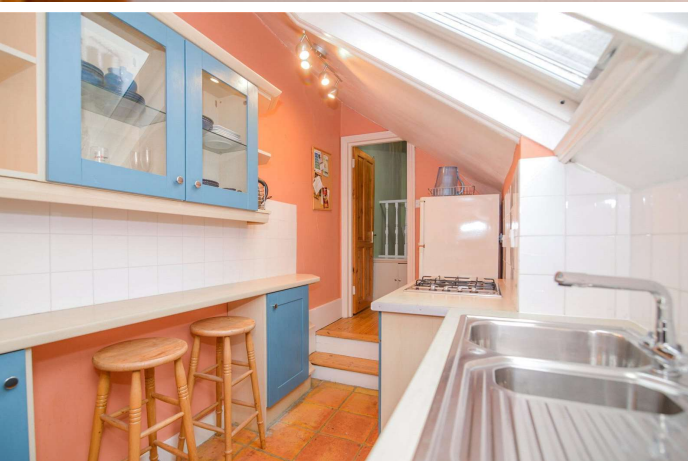




Sheen Park
Richmond, TW9

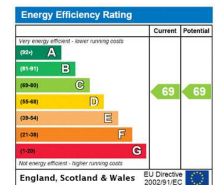




A well-presented flat with a homely feel located a short walk to Richmond town centre. The flat has two double bedrooms and a lovely living room with wooden flooring. Being on the top floor, there is restricted head height in places but this adds to the property's charm. There is a separate kitchen and bathroom

- •Top floor period conversion flat
- •Close to Richmond town centre
- •Two Double Bedrooms
- •Wooden flooring
- •Council tax band C

Asking Price £600,000



Tenure: Share of Freehold

Service Charge: £0

Ground Rent: £0

Local Authority:

Council Tax Band: C

Chestertons Richmond Sales

23a Friars Stile Road

Richmond

Surrey


TW10 6NH

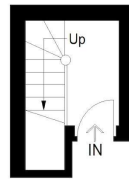
richmond@chestertons.co.uk

020 3758 3222

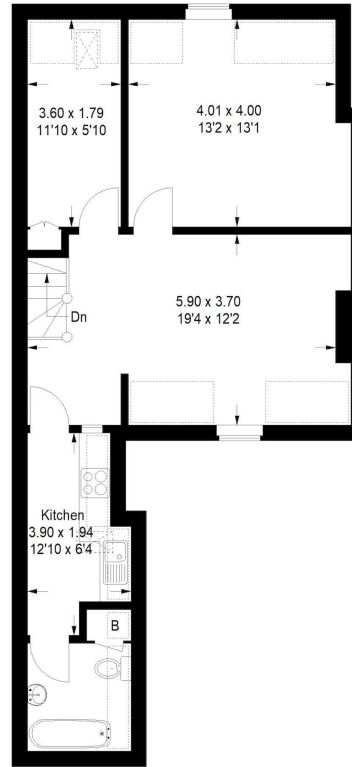
Sheen Park

Approx . Gross Internal Area = 64.8 sq mt / 697 sq ft

 = Reduced headroom
below 1.5 m / 5'0"



Ground Floor



First Floor

Featherstone Leigh Ltd

Every attempt is made to assure accuracy, however measurements are approximate and for illustrative purposes only. Not to scale. (812233)

Chesterton UK Services Limited trading as Chestertons for themselves and for the vendor of this property whose agents they are, give notice that (i) these particulars do not constitute any part of an offer or contract, (ii) all statements contained within these particulars are made without responsibility on the part of Chestertons or the vendor, (iii) whilst made in good faith, none of the statements contained within these particulars are to be relied upon as a statement or representation of fact, (iv) any intending purchasers must satisfy themselves by inspection or otherwise as to the correctness of each of the statements contained within these particulars, (v) the vendor does not make or give either Chestertons or any person in their employment any authority to make or give representation or warranty whatsoever in relation to this property. Wide angle lenses may be used. ©Copyright Chestertons | Chesterton UK Services Limited | Registered Office 40 Connaught Street, Hyde Park, London W2 2AB Registered Company Number 05334580.

