

# FLETCHERS

ESTATE AGENTS



## Fletcher Road, W4

£2,400 PCM

A beautifully presented two double bedroom apartment set on the sought after Fletcher Road in the heart of Chiswick. Offering bright and well proportioned rooms throughout, this superb home features a spacious reception room, a modern fitted kitchen, two generous double bedrooms and a contemporary bathroom.

Perfect for professional sharers or a couple seeking stylish living in a prime West London location.



A beautifully presented two double bedroom apartment set on the sought after Fletcher Road in the heart of Chiswick. Offering bright and well proportioned rooms throughout, this superb home features a spacious reception room, a modern fitted kitchen, two generous double bedrooms and a contemporary bathroom.

Perfect for professional sharers or a couple seeking stylish living in a prime West London location.

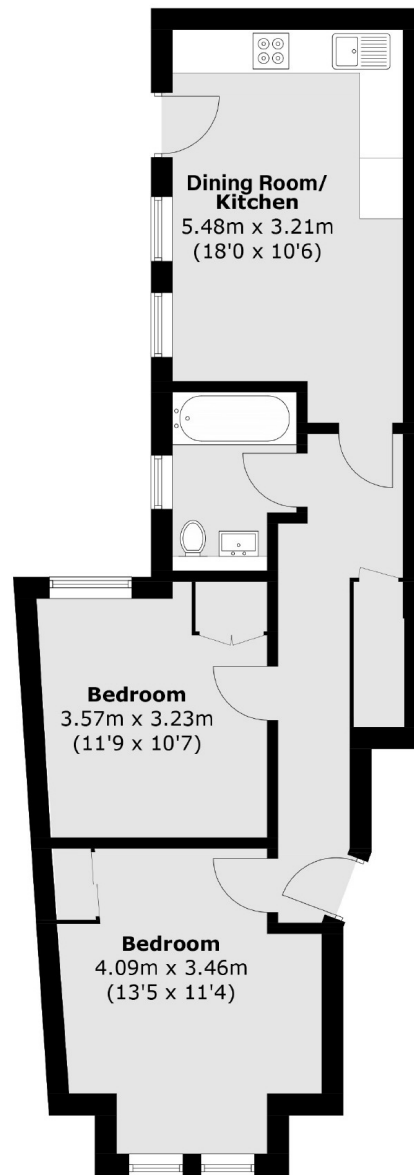
The property is ideally located moments from the excellent shops, cafés and restaurants of Chiswick High Road and Turnham Green Terrace, while Turnham Green Underground Station provides convenient access into Central London.

- Two Bedrooms • Modern Fitted Kitchen • Private Wrap Around Garden •
- Newly Refurbished • Great Transport Links • Plenty Of Storage •



# FLETCHERS

ESTATE AGENTS



Total area (approx.): 56.3 sq. m (606.0 sq. ft)

Fletchers Chiswick High Road Lettings  
86 Chiswick High Road  
Chiswick  
London  
W4 1SY  
020 8742 4100

Energy Rating: We aim to make our particulars both accurate and reliable. However they are not guaranteed; nor do they form part of an offer or contract. If you require clarification on any points then please contact us, especially if you're traveling some distance to view. Please note that appliances and heating systems have not been tested and therefore no warranties can be given as to their good working order