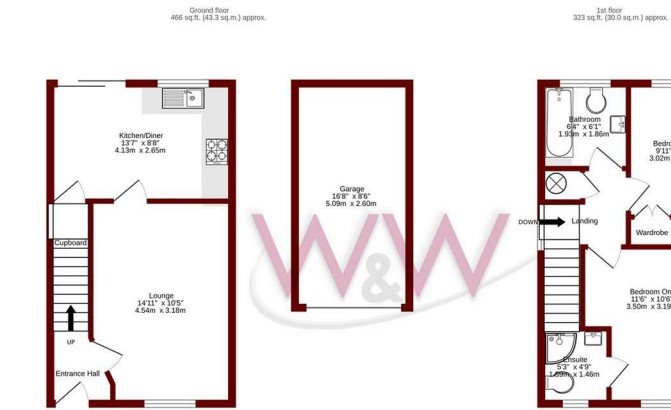




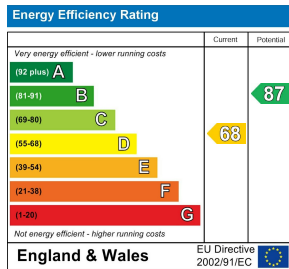
Rosemary Gardens | | Whiteley | PO15 7HD

£1,300 Per Month





TOTAL FLOOR AREA: 789 sq ft (73.3 sq m) approx.
While every attempt has been made to ensure the accuracy of the figures contained here, measurements of doors, windows, rooms and any other items are approximate and no responsibility is taken for any error. Information on this website, together with any other information, is provided for information only and should be used as such by any prospective purchaser. The services, together with any other services, have not been tested and no guarantee as to their quality or efficiency can be given. Made with Metreap 0204



Description

W&W are delighted to offer for rental this well presented two bedroom house in an enviable cul de sac location just a stone's throw from 'Meadowside'. The property boasts two bedrooms, lounge, kitchen/dining room, family bathroom & en-suite to the master bedroom. The property also benefits from a rear garden with a garage and parking nearby.

Rosemary Gardens is a sought after cul de sac just a short stroll to Whiteley Shopping Centre providing a variety of shops, eateries and amenities. Excellent transport links are also easily accessible including A27, M27 & Swanwick train station. The property is also within walking distance of two local primary schools.

Key features

- Two Bed End Terrace House
- Kitchen Diner
- En Suite to Master Bedroom
- Garage
- Living Room
- Family Bathroom
- Rear Garden
- Parking



H3 Whiteley Shopping Centre
 Whiteley Way
 Whiteley
 Hants
 PO15 7PD
 01489 580800
 pm@walkerwaterer.co.uk
 www.walkerwaterer.co.uk