



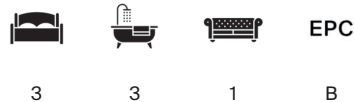
## ROSALIND FRANKLIN HOUSE

Kidderpore Avenue NW3



# ROSALIND FRANKLIN HOUSE, KIDDERPORE AVENUE

Immaculate lateral apartment within the modern development of  
Hampstead Manor with private parking for two cars.



Local Authority: London Borough of Camden

Council Tax band: Unknown

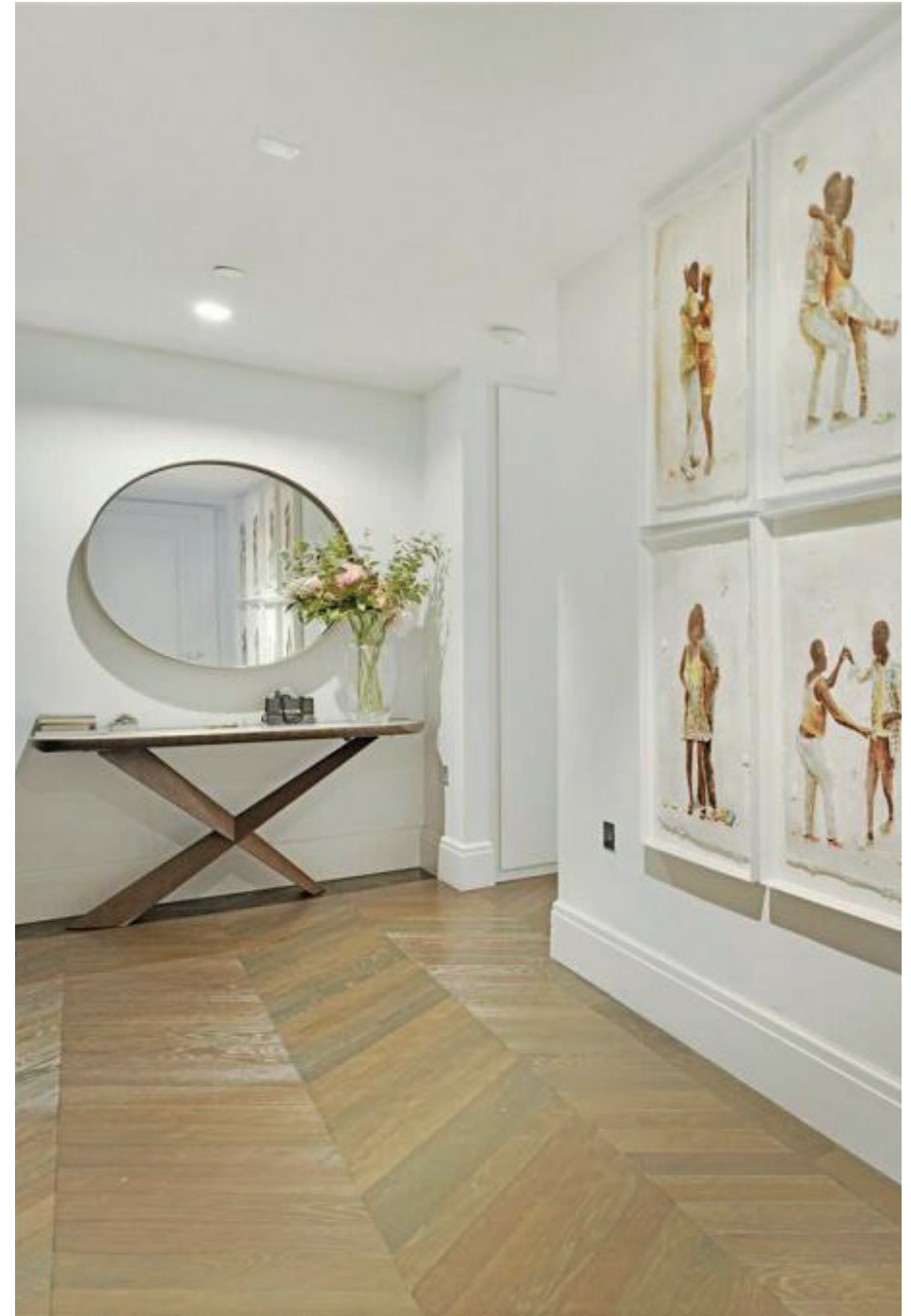
Tenure: Leasehold with approximately 989 years remaining

Service charge: £13,187 per annum, reviewed every year, next review due 2026

Offers in excess of: £2,000,000



This sleek apartment offers refined contemporary living within the prestigious Hampstead Manor development. Set on the fourth floor and spanning approximately 1,707 sq ft, this beautifully designed lateral apartment benefits underfloor heating throughout, comfort cooling in the reception and principal bedroom, and video door entry. The property comprises a bright kitchen/dining and reception room that seamlessly opens onto a private balcony. It also features a principal bedroom suite with en suite, built-in storage, and access to a second private balcony. Two additional double bedrooms with built-in wardrobes and two shower rooms (one en suite) are also included. There is a utility cupboard and ample storage throughout. Further benefits include two private balconies, a 24-hour concierge, a residents-only gym and space, secure underground parking for two cars, access to beautiful landscaped communal gardens and sleek modern interiors.



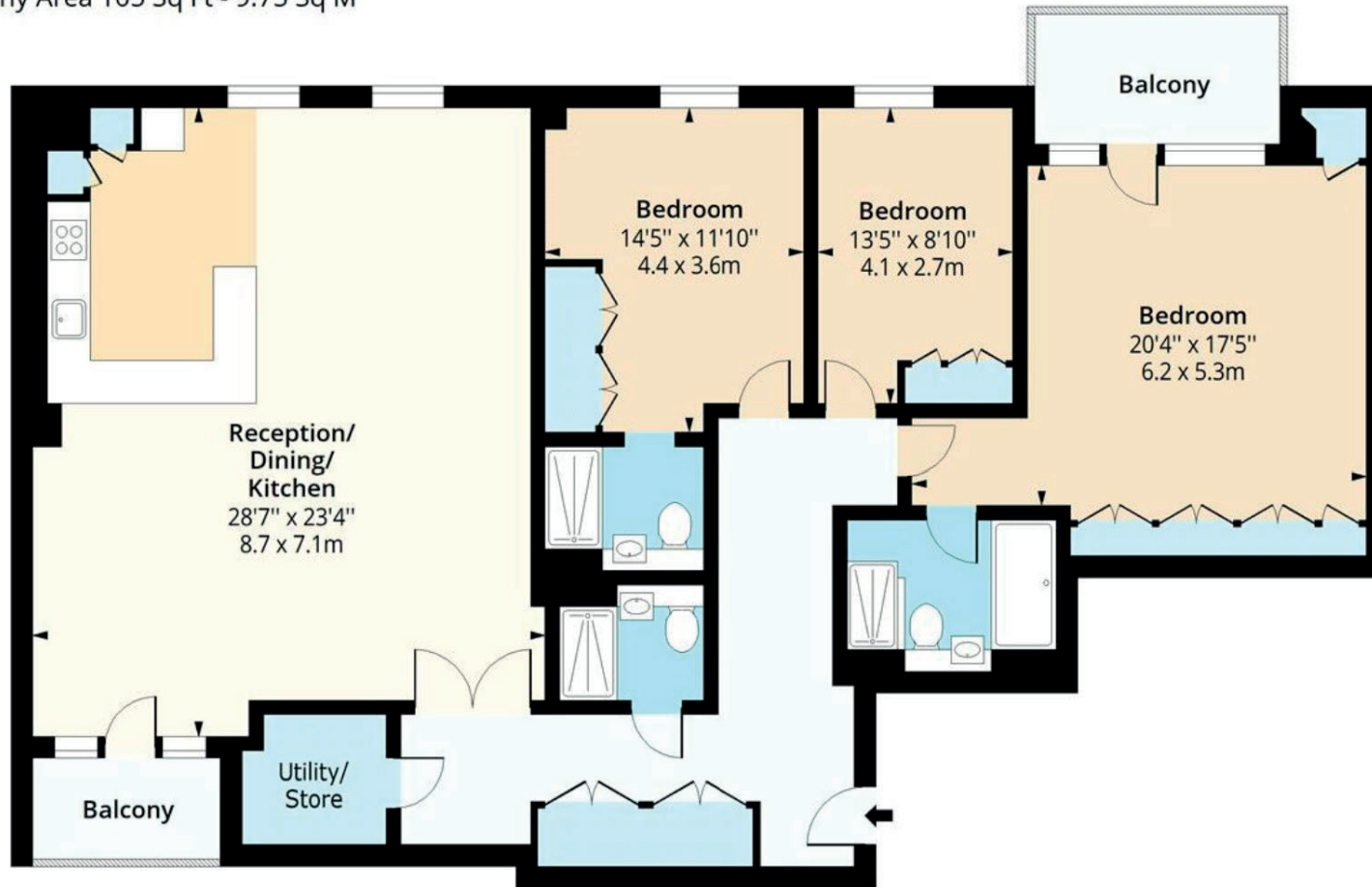
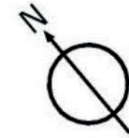




# Rosalind Franklin, NW3

Approx. Gross Internal Area 1707 Sq Ft - 158.58 Sq M

Approx. Gross Balcony Area 105 Sq Ft - 9.75 Sq M



## Fourth Floor

Floor Area 1707 Sq Ft - 158.58 Sq M

Approximate Gross Internal Area = 158.58 sq m / 1707 sq ft

This plan is for layout guidance only. Not drawn to scale unless stated. Windows and door openings are approximate. Whilst every care is taken in the preparation of this plan, please check all dimensions, shapes and compass bearings before making any decisions reliant upon them. (ID767266)

We would be delighted  
to tell you more.

**Nathan White**  
+44 7484 987 779  
nathan.white@knightfrank.com

**Hampstead**  
58-62 Heath Street  
London NW3 1EN

[knightfrank.co.uk](https://www.knightfrank.co.uk)

Your partners in property

1. Particulars: These particulars are not an offer or contract, nor part of one. You should not rely on statements given by Knight Frank in the particulars, by word of mouth or in writing ("information") as being factually accurate about the property, its condition or its value. Neither Knight Frank nor any joint agent has any authority to make any representations about the property, and accordingly any information given is entirely without responsibility on the part of Knight Frank. 2. Material Information: Please note that the material information is provided to Knight Frank by third parties and is provided here as a guide only. While Knight Frank has taken steps to verify this information, we advise you to confirm the details of any such material information prior to any offer being submitted. If we are informed of changes to this information by the seller or another third party, we will use reasonable endeavours to update this as soon as practical. 3. Photos, Videos etc: The photographs, property videos and virtual viewings etc. show only certain parts of the property as they appeared at the time they were taken. Areas, measurements and distances given are approximate only. 4. Regulations etc: Any reference to alterations to, or use of, any part of the property does not mean that any necessary planning, building regulations or other consent has been obtained. A buyer must find out by inspection or in other ways that these matters have been properly dealt with and that all information is correct. 5. Fixtures and fittings: A list of the fitted carpets, curtains, light fittings and other items fixed to the property which are included in the sale (or may be available by separate negotiation) will be provided by the Seller's Solicitors. 6. VAT: The VAT position relating to the property may change without notice. 7. To find out how we process Personal Data, please refer to our Group Privacy Statement and other notices at <https://www.knightfrank.com/legals/privacy-statement>.

Particulars dated Aug 2025. Photographs and videos dated Aug 2025. All information is correct at the time of going to print. Knight Frank is the trading name of Knight Frank LLP. Knight Frank LLP is a limited liability partnership registered in England and Wales with registered number OC305934. Our registered office is at 55 Baker Street, London W1U 8AN. We use the term 'partner' to refer to a member of Knight Frank LLP, or an employee or consultant. A list of members names of Knight Frank LLP may be inspected at our registered office. If you do not want us to contact you further about our services then please contact us by either calling 020 3544 0692, email to [marketing.help@knightfrank.com](mailto:marketing.help@knightfrank.com) or post to our UK Residential Marketing Manager at our registered office (above) providing your name and address.