



24 Sunset Cliff, Hoburne Naish

£109,950

Mitchells
1963 — TODAY



*24 Sunset Cliffs
Hoburne Naish Holiday Park
Barton On Sea
Hampshire
BH25 7RE*

An impressive two bedroom, two bathroom holiday home situated in a fantastic location on the popular Hoburne Naish Holiday Park. The property benefits from sea glimpses and features an open plan kitchen/living area with south-facing decking, two good sized bedrooms, bedroom one with an en-suite shower room and a window seat, along with a long remaining licence, allocated parking, and a family shower room.

- 2023 Regal Hartland Lodge 43x14
- License Length: 30/11/2043
- 2026 Site Fees: £10,243.37
- 2026 Rates: £700.31
- Second Home Only
- Cannot Be Main Residence
- Open Plan Kitchen/Living Room
- Two Bedrooms
- Family Shower Room
- En-Suite Shower Room



The Property

Kitchen/dining room with timber effect flooring, a generous range of shaker style wall and base units with a contrasting timber effect worktop, a one and a half bowl sink unit with mixer tap and drainer, a Cookmaster range style oven with five burner gas hob and extractor fan above, an integrated fridge/freezer, larder cupboard, integrated slimline dishwasher, integrated eye level microwave, integrated washing machine, a cupboard housing the Glow Worm central heating boiler, and a four seater dining table and chairs.

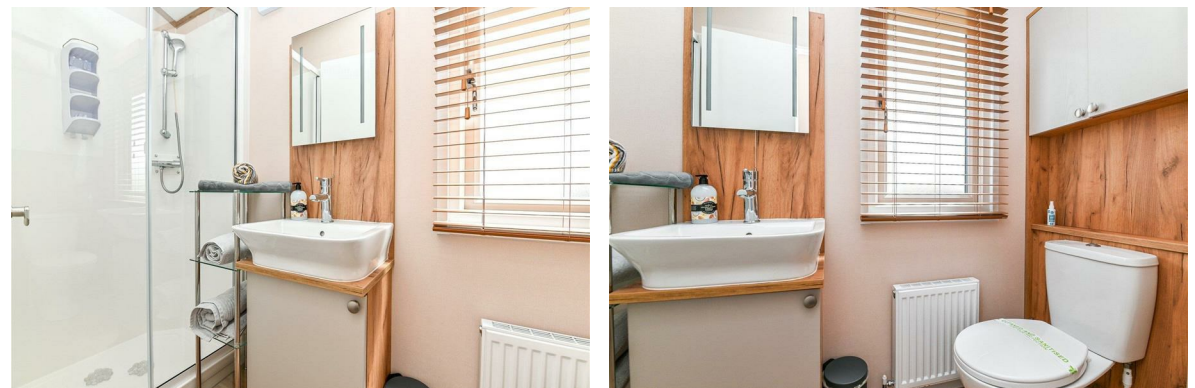
The sitting room enjoys a pleasant triple aspect, with double casement doors opening onto the south-facing decking, along with a feature fireplace and electric fire.

Bedroom one is a particular feature of the holiday home, offering a generous super king size room with two fitted single wardrobes, a feature window seat, wall mounted TV with aerial, matching bedside cabinets, dressing table with drawers, wall hung storage, and a door leading to the en-suite shower room.

En-suite shower room with timber effect flooring, an extractor fan, UPVC double glazed window, radiator, fitted cupboards, and a suite comprising WC, wash hand basin with mixer tap and storage beneath, and a shower cubicle with thermostatically controlled shower and glass sliding doors.

Bedroom two is a generous twin sized room with a fitted single wardrobe, wall hung storage, matching bedside cabinet, and a pleasant side view.

Family bathroom with timber effect flooring, extractor fan, UPVC double glazed window, and a modern suite comprising WC, wash hand basin with mixer tap and storage beneath, fitted storage cupboards with shelving, and a shower cubicle with thermostatically controlled shower and sliding glass doors.





Gardens & Grounds

24 Sunset Cliffs is situated on a fantastic plot, enjoying sea glimpses from both the south-facing decking and the sitting room. The holiday home is just a short, level walk from all the facilities at Hoburne and also benefits from two allocated parking spaces.

Site Fees & Charges

2026 Site Fees: £10,243.37

2026 Rates: £700.31

License Length: 30/11/2043

Floor Plan

Approx. 53.7 sq. metres (577.8 sq. feet)



Total area: approx. 53.7 sq. metres (577.8 sq. feet)



Situation

Hoburne Naish Holiday Park is set in a stunning clifftop location, offering breathtaking views of the Dorset coastline. The park provides direct access to beautiful beaches, scenic coastal walks, and is within easy reach of the picturesque New Forest National Park. On-site, you'll find excellent facilities including a heated indoor and outdoor pool, adventure golf, a fitness suite, a multi-use games area, and a restaurant and bar. The park also hosts a vibrant entertainment complex, offering a variety of events and activities throughout the year. Perfect for those seeking relaxation and adventure, Hoburne Naish offers an exceptional lifestyle in a tranquil yet well-connected setting.



Mitchells.uk.com
info@mitchells.uk.com
01425 616411

Centenary Buildings
8-10 Old Milton Road
New Milton
Hampshire
BH25 6DT

Mitchells
1963 — TODAY

