



High Road, N12

£1,650 Per calendar month

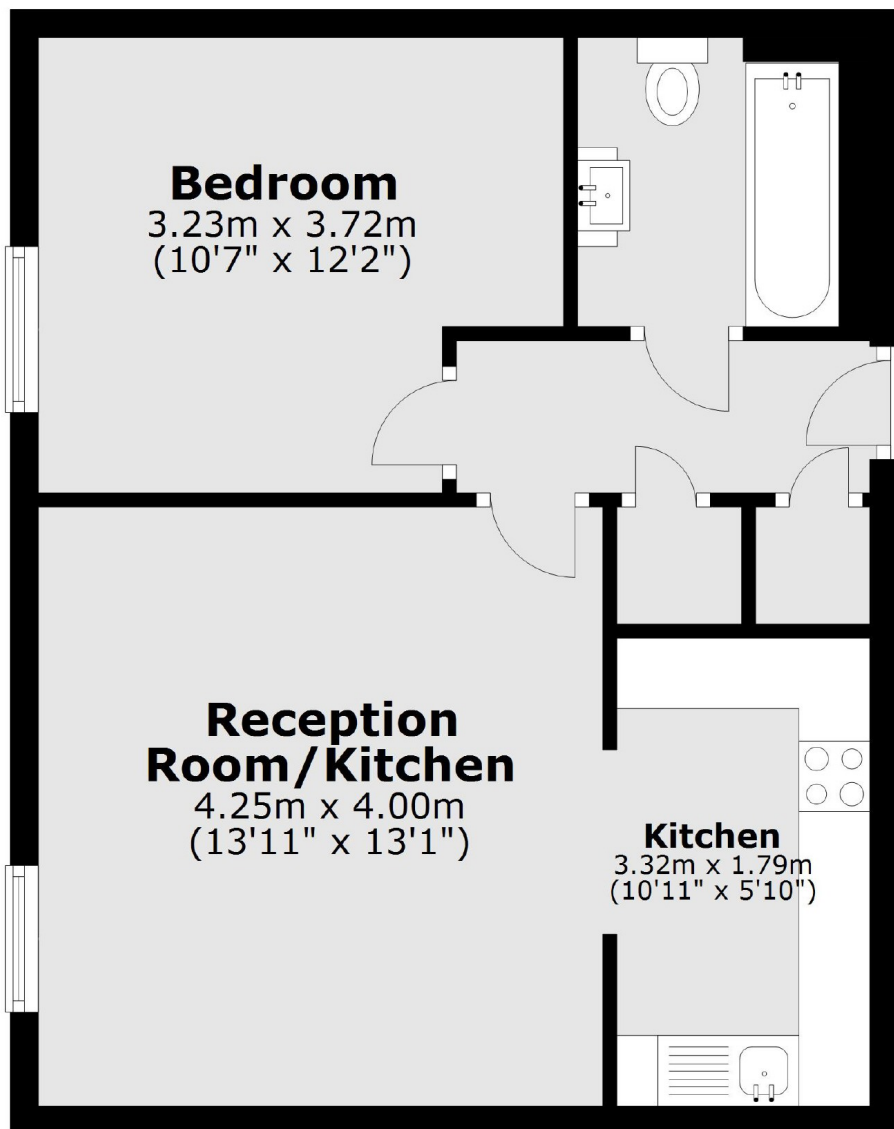
Luxury one bedroom purpose built apartment within a modern development in North Finchley. The property offers a bright open plan living room, one double bedroom with good storage, a modern bathroom, private parking and communal gardens.

Solomons Court is a beautiful private gated development with private parking, lift access and communal gardens. Located directly opposite Finchley Lido Leisure Centre, cinema and Hollywood Bowl.

Features

- One Double Bedroom
- Secure Development
- Open Plan Kitchen
- Private Parking
- First Floor
- Communal Garden

High Road, London, N12



Total area: approx. 44.6 sq. metres (480.6 sq. feet)