



## Gayville Road, SW11

£760,000

 2  2  1  D

- Two Double Bedrooms
- Two Bathrooms
- Chain Free
- Between The Commons
- Close To Transport
- Potential To Extend









## ABOUT THE PROPERTY

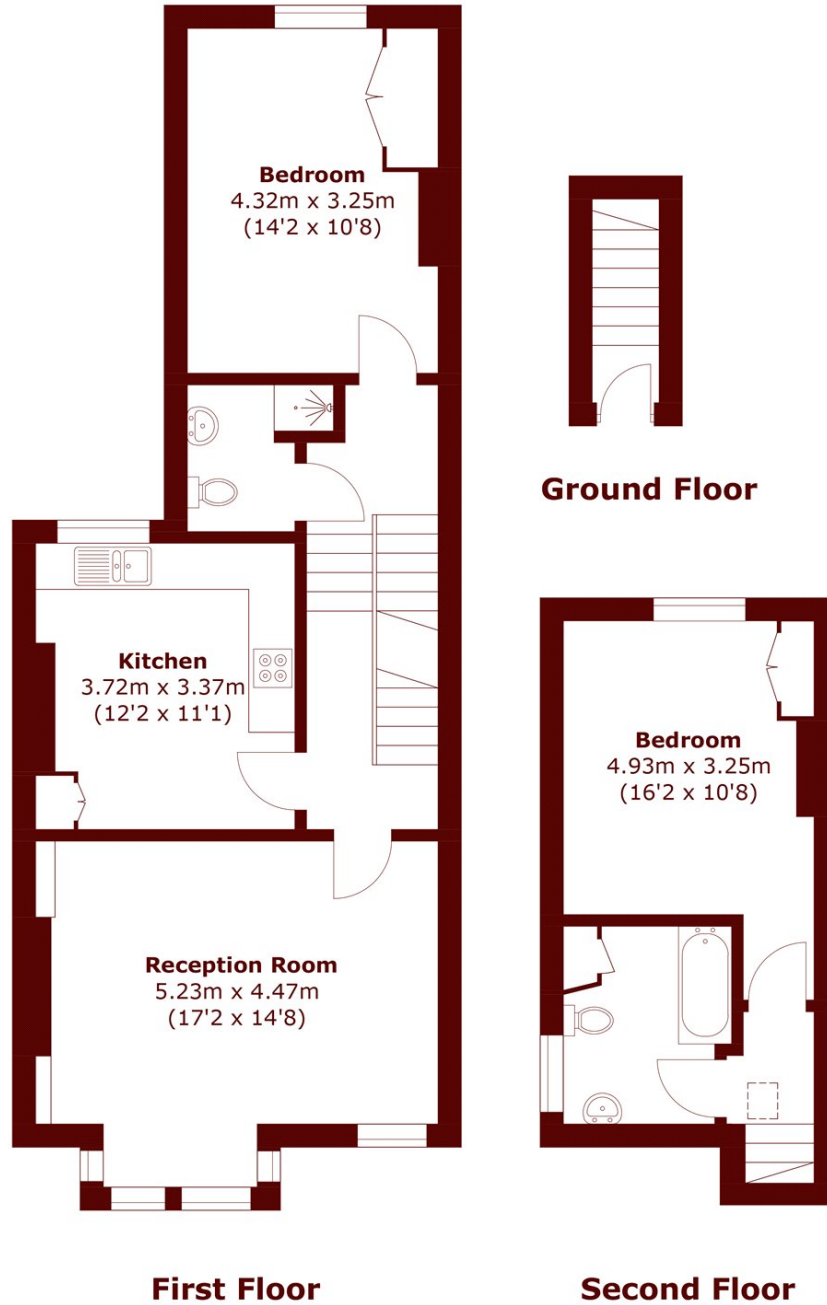
A generous split level Victorian conversion flat with two large bedrooms, two bathrooms and potential to extend further.

Stairs lead up from a small communal entrance to the first floor, there is a rear aspect, spacious double bedroom with a fitted wardrobe and this has use of a modern shower room. Up another half level, you are greeted by a large full width living room with a bay window, feature fireplace and bespoke cabinetry. There is also a separate, modern eat-in kitchen with white units and contrasting marble effect worktops. Stairs go up again to the top floor where there is another spacious double bedroom with a fitted wardrobe and a white three piece bathroom suite with a shower over the bath. The loft could be converted subject to the usual consents.

Gayville Road is a popular residential road 'Between the commons'. It has convenient access to Wandsworth Common station, Clapham South underground and Clapham Junction station. The amenities of Northcote Road and Bellevue Road are close by along with both Wandsworth and Clapham Common.

Council Tax Band- E





Total area (approx.): 87.3 sq. m (939.6 sq. ft)

**Marsh & Parsons Battersea**  
118 Northcote Road, London,  
SW11 6QP  
020 8673 4377

We aim to make our particulars both accurate and reliable. However, they are not guaranteed; nor do they form part of an offer or contract. If you require clarification on any points then please contact us, especially if you're traveling some distance to view. Please note that appliances and heating systems have not been tested and therefore no warranties can be given as to their good working order.