
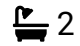



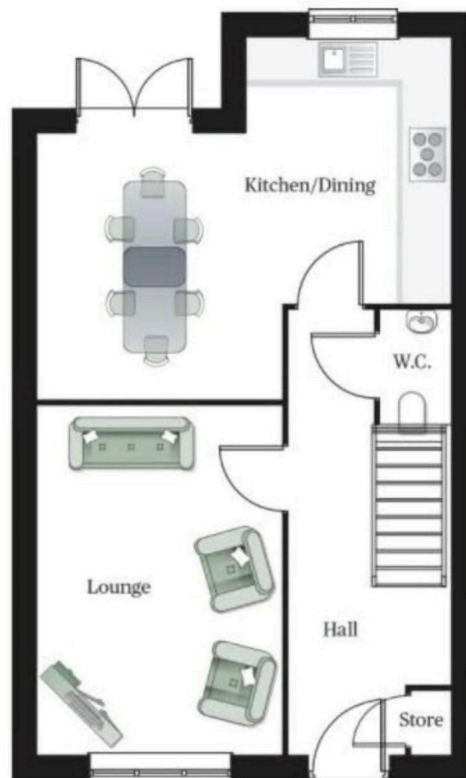
Burdon Place, Sedgefield , TS21 3BF

£245,000

 3  2  1



- Fabulous summer house
- Pergola with retractable roof
- Three ample storage cupboards
- Spacious family kitchen/diner with french doors leading to the rear garden
- Superbly presented throughout
- Generous double width block paved drive
- Beautiful downstairs cloakroom/wc
- En suite/shower
- Viewing highly recommended
- Attractive rear garden with raised beds



Delightful, three bedroom semi detached property in a semi rural location situated within a small cluster of 100 homes (some to be constructed). Located close to Hardwick Hall and Park, as well as local schools, shops, restaurants and cycle paths. Knotty Hill Golf Course is also close by.