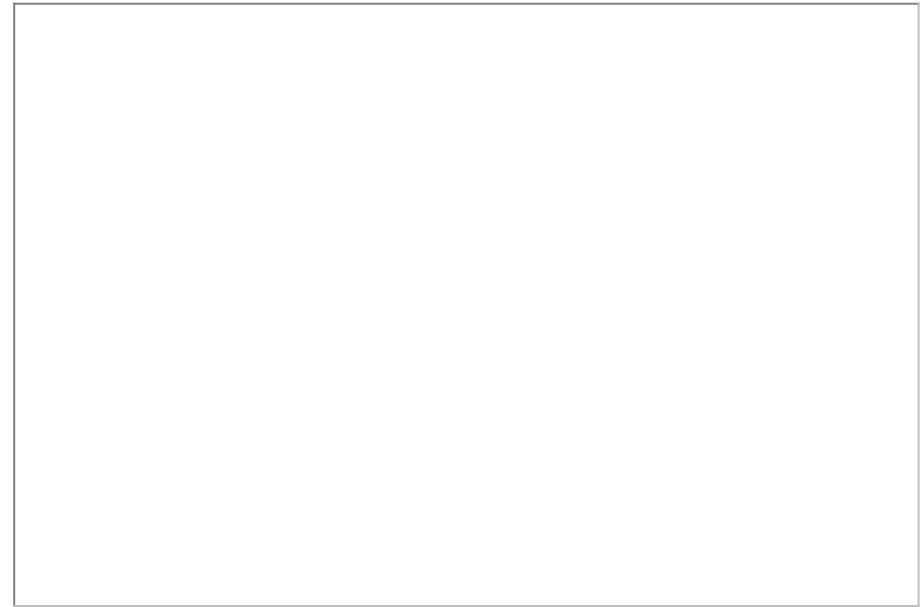




13 Montpellier Villas, Cheltenham, GL50

£225,000

🛏 1 🍽 1 🚗 1



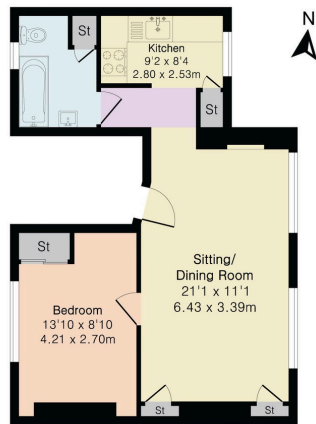
- Grade II listed period building • First floor apartment
- Bright and airy sitting/dining room • Modern fitted kitchen
- Generous double bedroom • Useful built-in storage cupboards
- Offered with no onward chain • Ideal for first-time buyers, downsizers, or investors



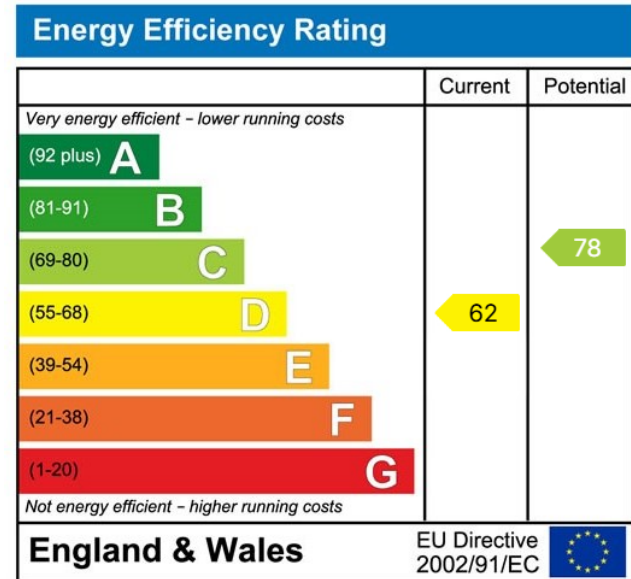
Charming one-bed Montpellier apartment in Grade II building, offered with no onward chain.



Approximate Gross Internal Area 450 sq ft - 42 sq m



First Floor Flat



Elliot Oliver Sales
 101 Promenade, Cheltenham GL50 1NW
 01242 321091
www.elliottoliver.co.uk

