



Price

£2,800 PCM

Fees Apply



Available 27/06/26

Hill Rise Dartford DA2

Wards

Helping you move forwards



Main Features

- Stunning semi-detached family home
- Renovated to a modern standard throughout
- Versatile living accommodation
- Shower Room & Bathroom
- Driveway & separate allocated parking
- Spacious garden



Deposit required is £3,230.77
Dartford District - Council Tax Band Tax Band C

Renting a property is a big commitment and we recommend that you visit the local authority website and these websites which offer helpful information and advice about letting

www.gov.uk/government/publications/how-to-rent

www.gov.uk/private-renting

www.wardsofkent.co.uk/renting/tenancy-fees-individuals/

www.gov.uk/green-deal-energy-saving-measures

Call Dartford 01322 311291 ■ wardsofkent.co.uk

IMPORTANT INFORMATION: Please contact our Lettings Team who will confirm the total costs involved in renting this property. For clarification, we wish to inform the prospective tenant that we have prepared these details as a general guide. The agent has not carried out a detailed survey nor tested the services, appliances, or specific fittings (unless otherwise stated), and no warranty can be given as to their condition. All room measurements are taken at floor level. We strongly recommend that all the information which we provide about the property is verified by yourself and your advisers. The contents of this publication are © Wards, 2015. Wards is a trading name of Arun Estates Limited Registered in England No. 2597969

Accommodation

Porch

Entrance Hall

Open Plan Lounge/Kitchen 8.53m x 2.57m

Dining Room 4.39m x 2.14m

Shower Room

Bedroom 4 4.02m x 3.19m

Bedroom 1 3.09m x 2.76m

Bedroom 2 2.37m x 1.64m

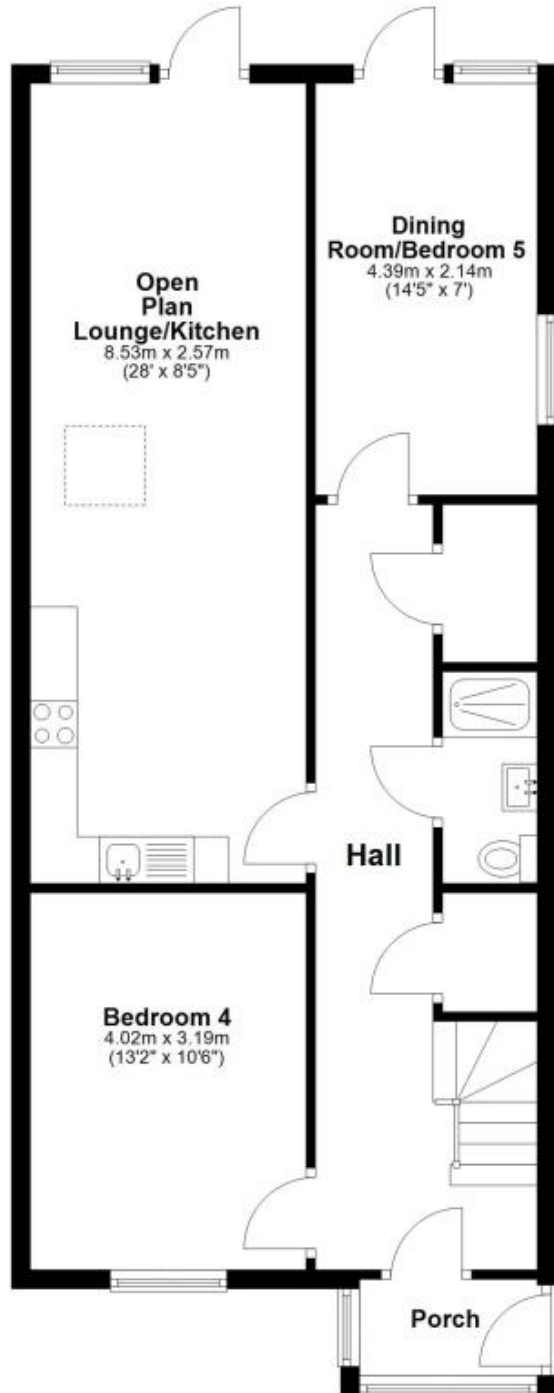
Bedroom 3 2.31m x 2.34m

Bathroom



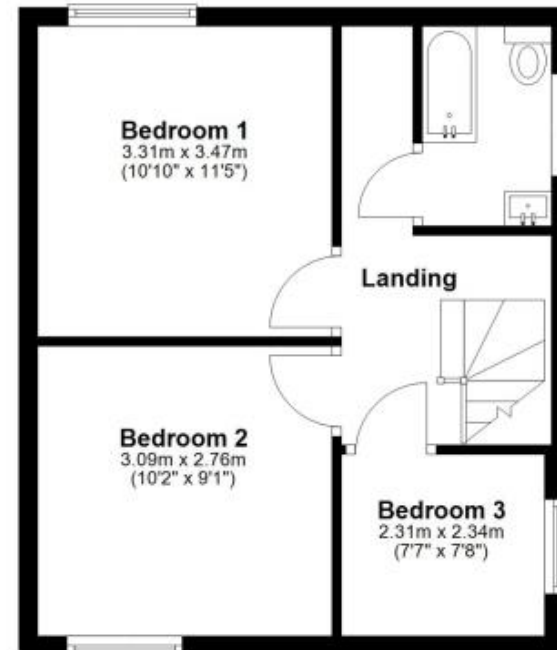
Ground Floor

Approx. 67.4 sq. metres (725.0 sq. feet)



First Floor

Approx. 36.6 sq. metres (393.9 sq. feet)



Total area: approx. 103.9 sq. metres (1118.9 sq. feet)