



Catherine Drive, TW9

£2,750 Per calendar month

A well presented two bedroom first floor apartment has a spacious living room with neutral decor, fully fitted kitchen, two double bedrooms and smart fitted bathroom. The property also has residents parking.

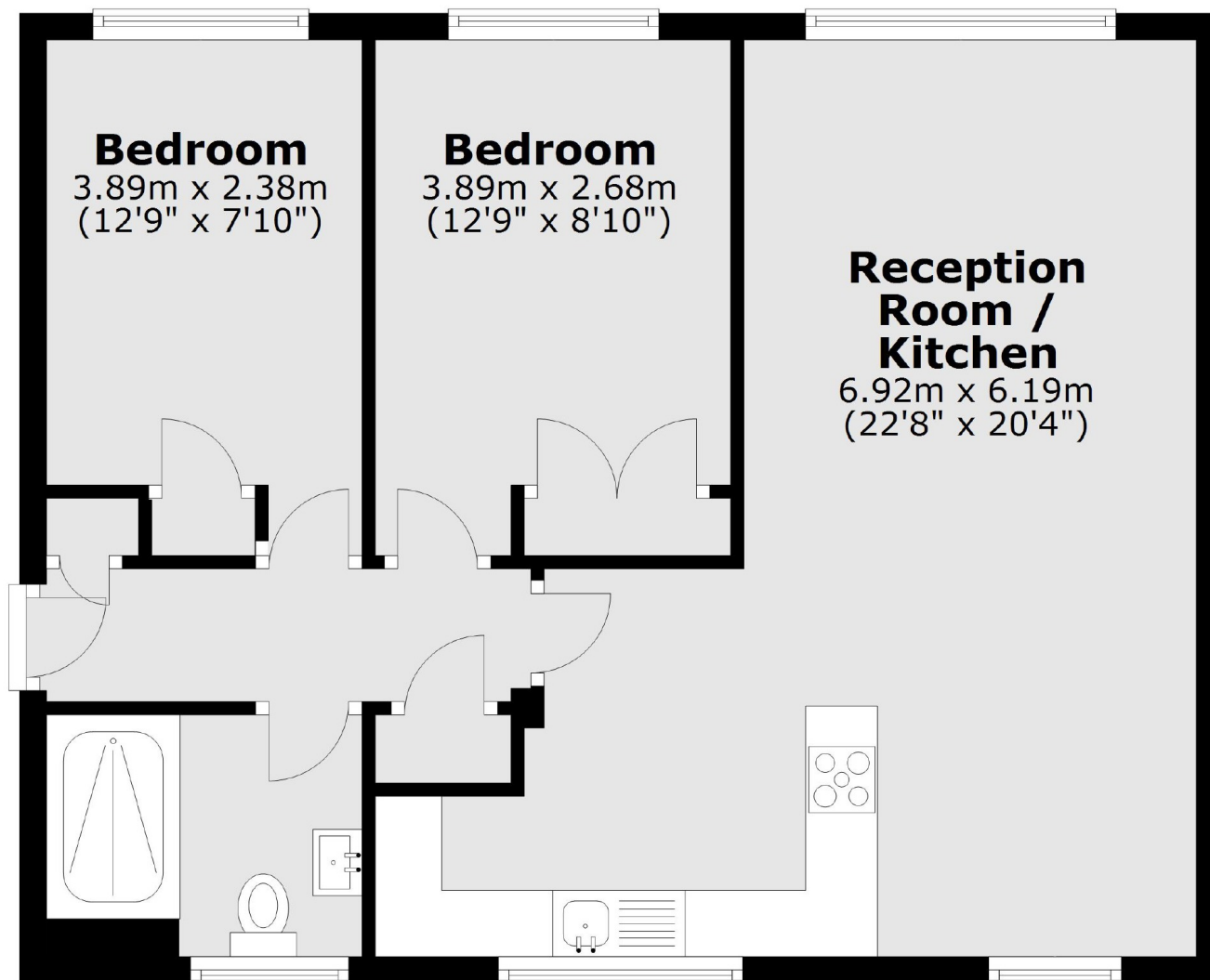
This popular development located moments from the Richmond town centre and train station. There is a private gate solely for the residents of Catherine Drive which takes you directly opposite Richmond train station.

Features

- Two Double Bedrooms
- Spacious Reception Room
- Modern Bathroom
- Central Location
- Close To Station
- Communal Gardens

Catherine Drive,
Richmond, TW9

First Floor



Total area: approx. 60.1 sq. metres (646.7 sq. feet)