



House - Semi-Detached

# 23 FAIRFIELD ROAD, LONDON, GREATER LONDON, N18 2QP

PCM

# £2,500

## FEATURES

- Four bedroom
- Reception / dining room
- Fitted kitchen
- Family bathroom
- Downstairs shower room
- Separate toilet
- Utility room
- Rear Garden



# RASH & RASH

# 4 Bedroom House - Semi-Detached located in London

Beautifully presented four bedroom mid terrace house within 400M of Silver Street overground station (Liverpool St.). The property is in excellent condition throughout with a lovely 33' ft double reception room / open plan kitchen, separate utility room, 60' ft rear garden and garage storage. Ideal for professionals to work from home. Available mid June. Furnished.

Call us on

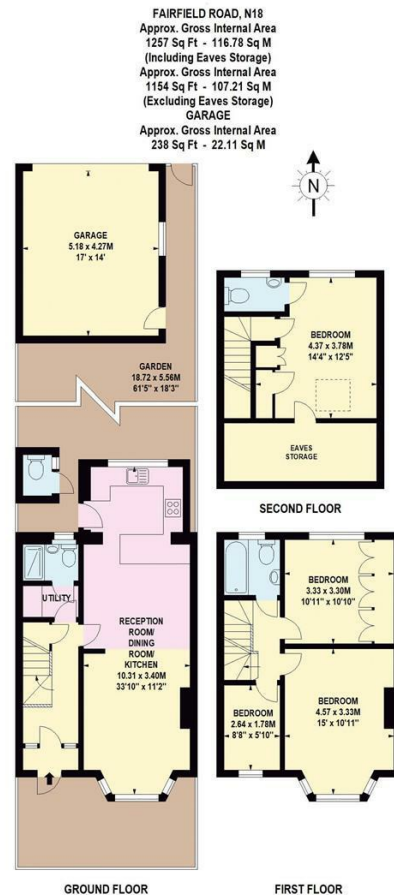
**02088822828**

[info@rashandrash.com](mailto:info@rashandrash.com)

<https://www.rashandrash.com/>

**Council Tax Band**

**D**



Energy Efficiency Rating		Current	Potential
<i>Very energy efficient - lower running costs</i>			
(92 plus)	A		83
(81-91)	B		
(69-80)	C	70	
(55-68)	D		
(39-54)	E		
(21-38)	F		
(1-20)	G		
<i>Not energy efficient - higher running costs</i>			
<b>England &amp; Wales</b>		EU Directive 2002/91/EC	

Agents Note: Whilst every care has been taken to prepare these particulars, they are for guidance purposes only. All measurements are approximate and are for general guidance purposes only and whilst every care has been taken to ensure their accuracy, they should not be relied upon and potential buyers are advised to recheck the measurements.

**RASH & RASH**