

CorrieandCo

INDEPENDENT SALES & LETTING AGENTS



1 Fell Street

Barrow-In-Furness, LA14 1DD

Offers In The Region Of £130,000



3



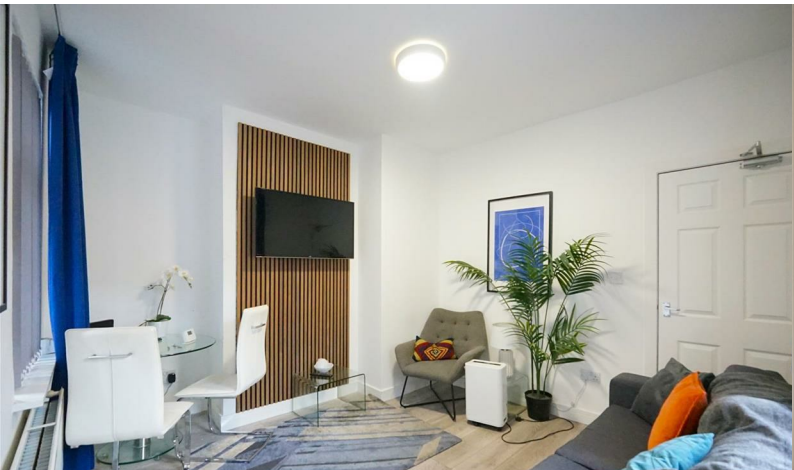
3



1



D



1 Fell Street

Barrow-In-Furness, LA14 1DD

Offers In The Region Of £130,000



This modern end-terrace house offers a smart and practical layout, finished to a contemporary standard throughout. The property features three well-proportioned bedrooms, each providing comfortable and spacious accommodation with the added benefit of its own en-suite facility. Offered with no onward chain, this is an ideal opportunity for investors.

Stepping inside, you enter the hallway giving access to the living room, the first bedroom and the stairs leading to the first floor. The living room acts as the main communal area of the house and has been decorated with laminate flooring and white walls, and is a comfortable lounge area with room for seating and everyday living. To the left is the kitchen, which is compact and functional in design. It has a modern finish with practical workspace and storage, making good use of the available room while keeping a bright and tidy feel.

On the ground floor, Bedroom One offers a generous amount of space, comfortably accommodating larger furniture while still feeling open. The room also benefits from its own modern ensuite, adding privacy and convenience.

Upstairs, the layout continues with two further generously proportioned bedrooms positioned either side of the staircase landing. Bedroom Two feels particularly spacious and benefits from the larger ensuite bathroom on this floor, while Bedroom Three also offers a good amount of room along with its own ensuite facilities. Both rooms have a bright, airy feel and continue the home's modern styling.

There is a rear yard externally for outdoor seating.

Living Room

12'4" x 10'8" (3.760 x 3.252)

Kitchen

16'6" x 6'4" (5.034 x 1.938)

Bedroom One

12'3" x 10'2" (3.755 x 3.110)

Bedroom One En Suite

5'3" x 4'1" (1.613 x 1.263)

Bedroom Two

12'4" x 11'0" (3.762 x 3.360)

Bedroom Two En Suite

10'3" x 6'5" (3.148 x 1.972)

Bedroom Three

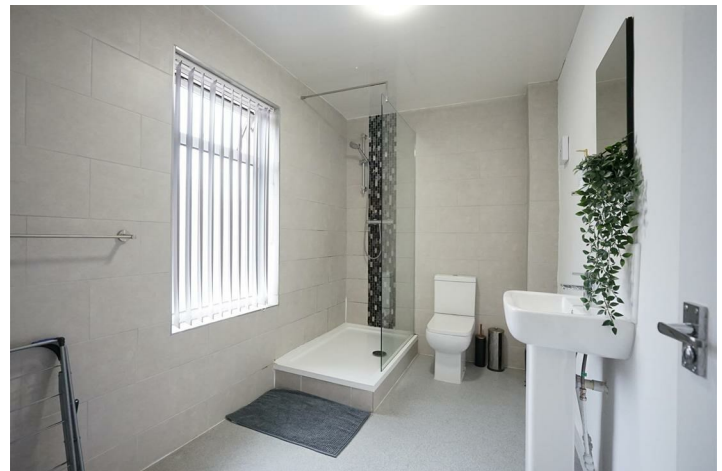
12'2" x 10'1" (3.727 x 3.091)

Bedroom Three En Suite

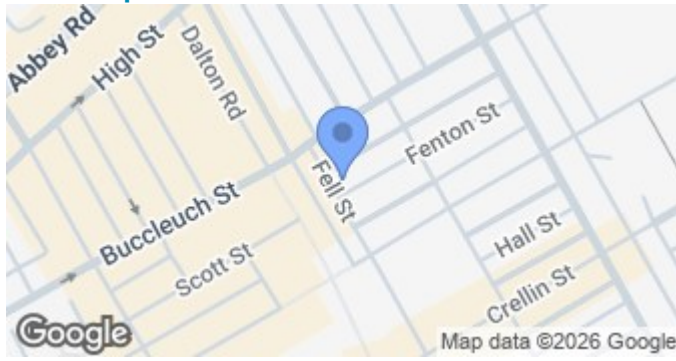
6'1" x 5'6" (1.877 x 1.695)



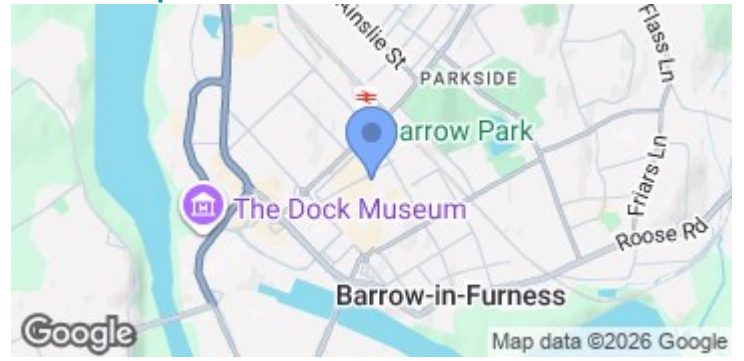
- Ideal For Investors
- Great For Shared Living
 - Yard To Rear
 - Gas Central Heating
- Three Bedrooms With En-Suites
 - Modern Decor
 - Council Tax Band - A
 - Double Glazing



Road Map



Terrain Map



Floor Plan



We are local, family run business who are wholly independent which means we can recommend services to most suit your needs. Our aim is to provide quality advice and expertise at all times, so you can make an informed decision whether buying or selling.

Estate agents are required by law to check a buyers /sellers identity to prevent Money Laundering and fraud. You do have to produce documents to prove your identity or address and information on your source of funds. Checking this information is a legal requirement to help safeguard your transaction, and failing to provide ID could cause delays. Corrie and Co, outsource these checks to speed up the process. The company does charge for such checks, please ask for more information and guidance on associated costs.

To ensure your move is stress free, we can help with Mortgage advice. We work alongside local Solicitors, offering competitive conveyancing services. Ask for further information.

