



Apt 5, Neilds Croft Neilds Brow, Bowdon

£725,000 Leasehold

Modern 3-bed penthouse (1370 sqft) with open-plan living, en-suite, family bathroom, secure parking, lift access, and no chain. Bright, spacious, and in a fantastic location.

Council Tax band: F

Tenure: Leasehold

EPC Energy Efficiency Rating: C

EPC Environmental Impact Rating:



**HIBBERT
HOMES**

SALES & LETTINGS

Welcome to this stunning three-bedroom penthouse apartment, offering a generous 1370 sqft of modern living space in a fantastic location. The open-plan layout creates a bright and airy atmosphere, with large windows that let in plenty of natural light throughout the day. The spacious living and dining area is perfect for entertaining friends or relaxing after a long day, and the sleek kitchen comes fully equipped with integrated appliances and plenty of storage. Each of the three bedrooms is well-proportioned and versatile, with the main bedroom benefiting from an en-suite bathroom for added privacy and convenience, while a stylish family bathroom serves the remaining bedrooms. The property also comes with secure parking and lift access, making every-day life that little bit easier. Low maintenance living means you can spend more time enjoying your new home and less time worrying about upkeep. Whether you're looking for a comfortable place to live or local bolt hole, this apartment ticks all the boxes. With its contemporary design, practical features, and unbeatable location, this penthouse is ready for you to move

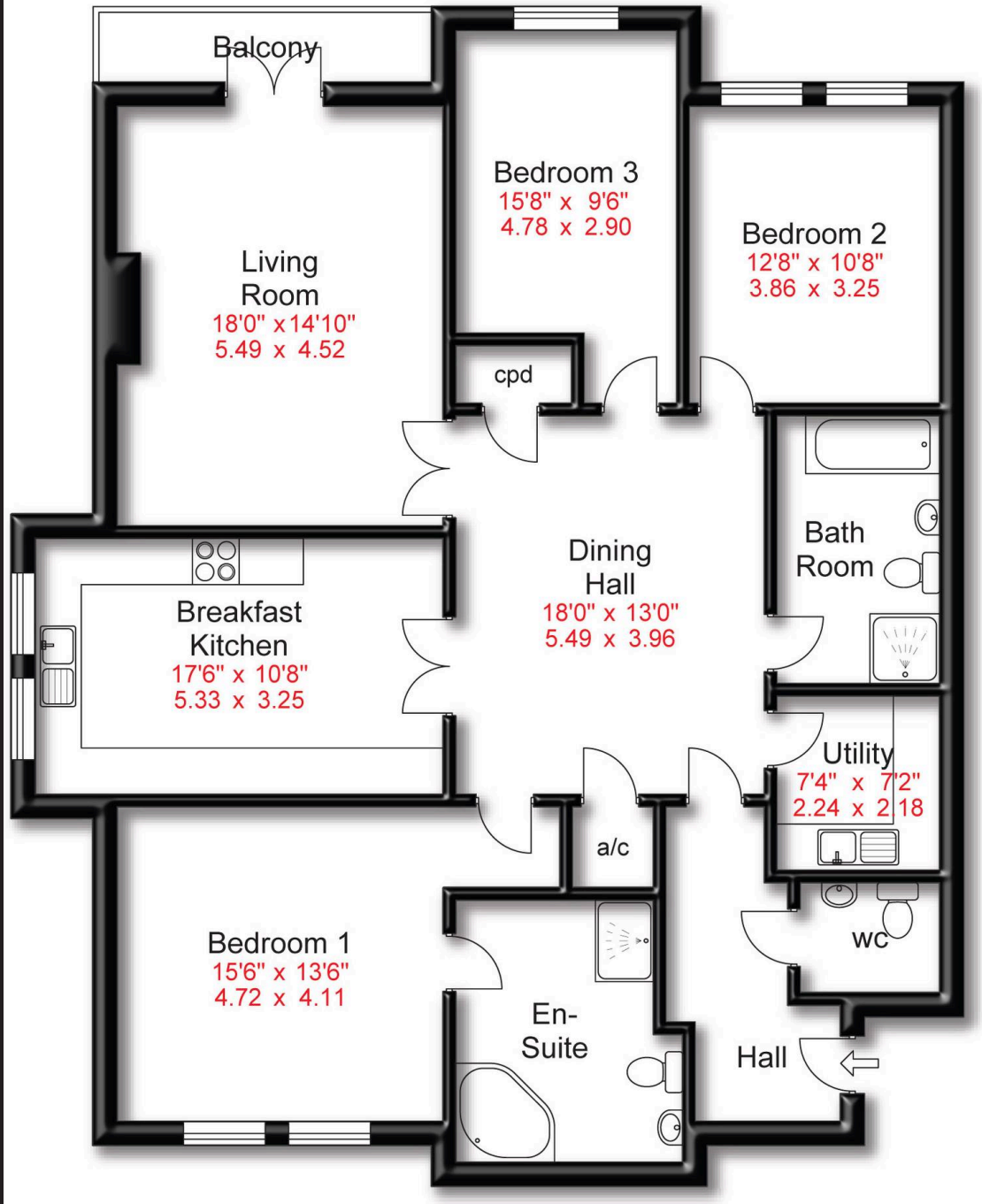


- Modern Apartment
- Penthouse
- 1370 Sqft
- Three Bedrooms
- Two Bathrooms
- South Facing Balcony
- Secure Parking
- Lift Access
- Great Location
- Low Maintaince Living





Approx Gross Floor Area= 1370 Sq. Feet



You can include any text here. The text can be modified upon generating your brochure.

