



## Upper Grosvenor Street, W1K

£2,100 Per week

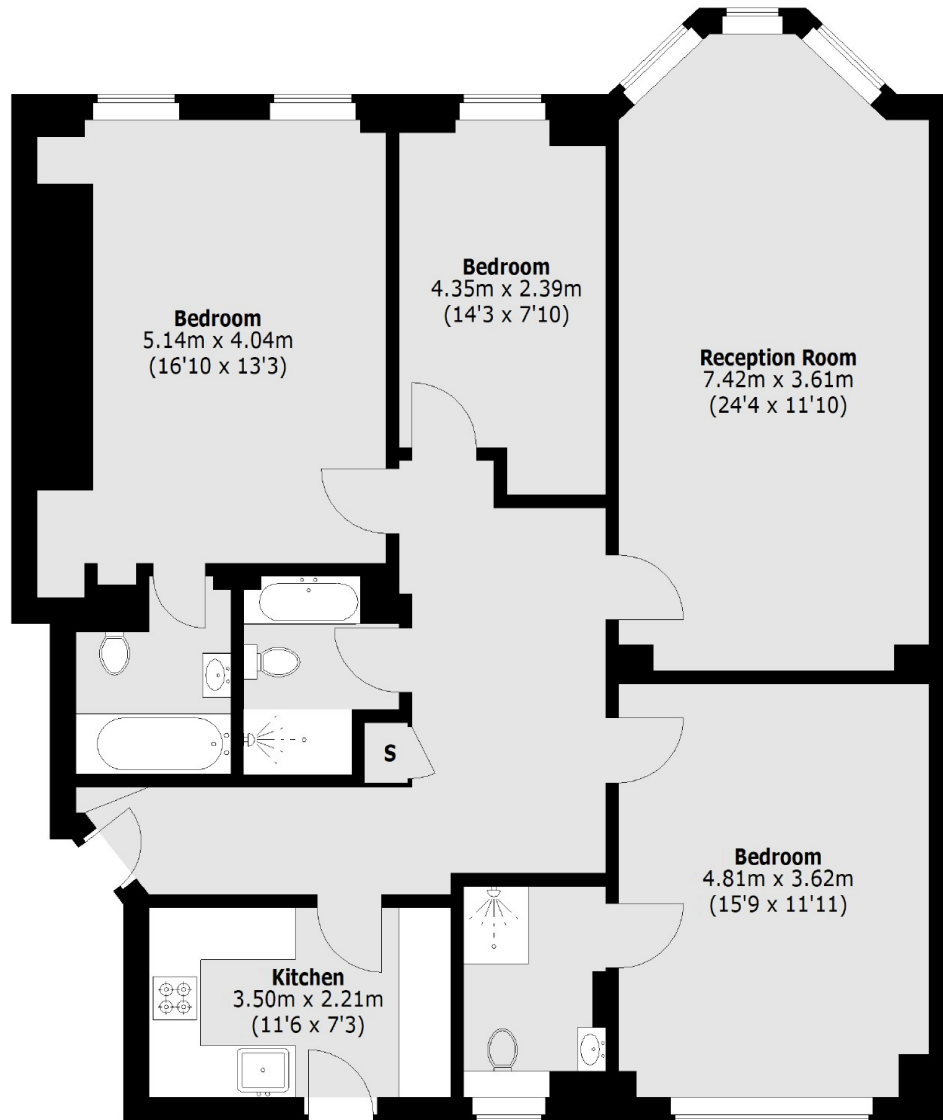
A newly renovated three double bedroom, three bathroom apartment on the first floor of an exclusive 24-hour portered building.

Grosvenor Square is a prestigious garden square located to the east of Hyde Park and to the north of Piccadilly.

### Features

New Renovation  
Three Bedrooms  
Three Bathrooms  
24-Hour Uniformed Porter  
Wooden Flooring  
Lift Access

Upper Grosvenor Street,  
London, W1K



**First Floor**

Total area (approx.): 114.78 sq. m (1,235 sq. ft)