



# Palace Court

NOTTING HILL, W2



Palace Court is a first-class property situated close to Kensington Gardens in the heart of Notting Hill, W2. Positioned on the first floor of a grand gated red-brick mansion block, the flat enjoys the significant advantages of a porter, lift, and off street parking. The interior features high ceilings and a muted colour palette, creating a spacious and tranquil atmosphere throughout. The west-facing reception room spans the front of the building overlooking the courtyard garden below. A fully equipped modern kitchen is arranged in an open-plan layout and connects to the reception room via a large internal window. To the rear of the flat are two generous double bedrooms, both with ample storage. The master bedroom has an ensuite shower room and there is a further shower room that also serves as a guest cloakroom. Presented in excellent order, the attention to detail is evident throughout, including excellent storage solutions and full-height doors that enhance the sense of space. The thoughtful layout and elegant finish make this the perfect Notting Hill base.









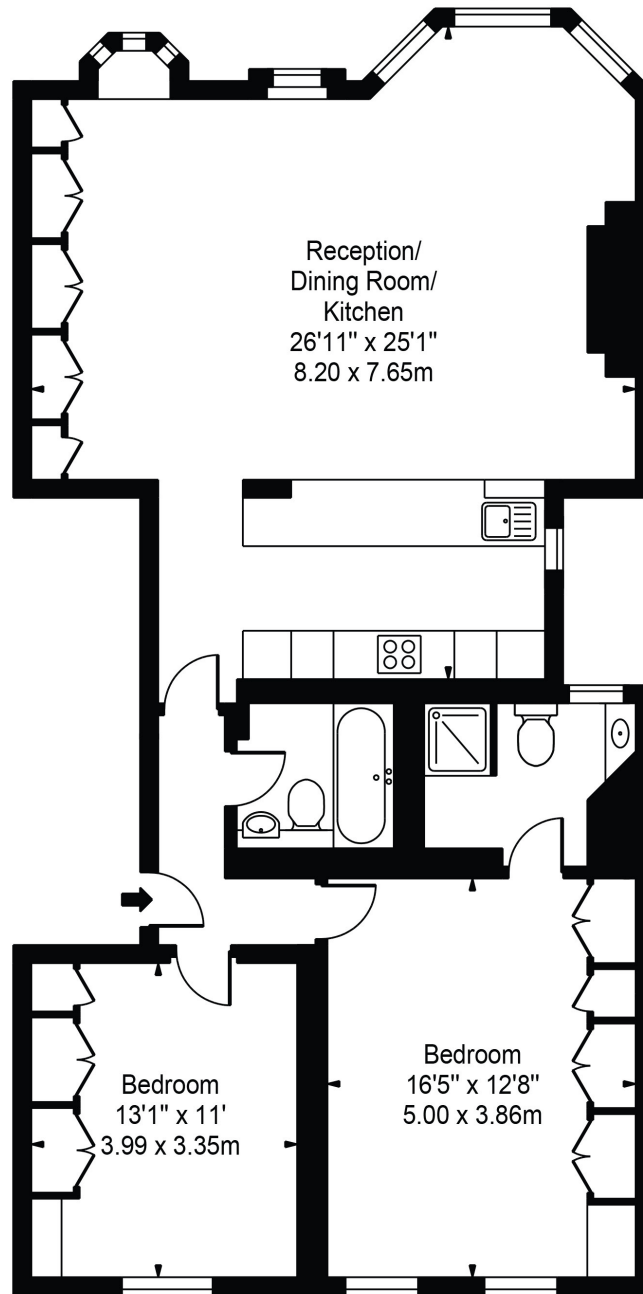






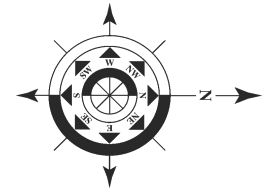


**Approx. Gross Internal Area** 1109 Sq Ft / 103.03 Sq M



FIRST FLOOR

**Asking price:** £2,000,000  
**Tenure:** Share of Freehold.  
Approx. 971 Years Remaining  
**Service Charge:** £5,610 in 2025  
**Ground Rent:** £100 in 2025  
**Local Authority:** Westminster  
**Council Tax Band:** H  
**EPC:** D



**Maskells**

105 Kensington Church Street  
London  
W8 7LN  
02078872532  
Sales@maskells.com