



Canrobert Street, E2

£475,000

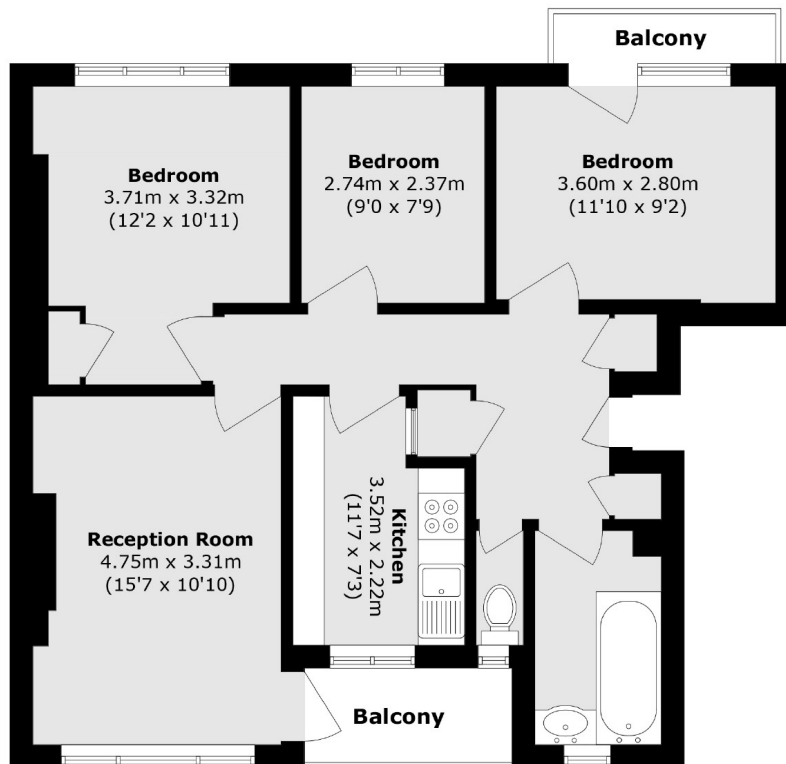
A large three bedroom apartment in an ideal location with two private balconies. This property offers a separate kitchen and spacious living area which provides access to one of the two balconies with far reaching City views. All three bedrooms are generous in size and the primary bedroom also has access to the second private balcony. The property features plenty of built in storage and wooden flooring throughout.

Situated in the heart of Bethnal Green, this location allows for easy access throughout the City via the Windrush line from Cambridge Heath or Bethnal Green stations and the Central line via Bethnal Green, as well as multiple bus routes. The green spaces of Weavers Fields and Bethnal Green Gardens are nearby and the local area offers a selection of cafés and restaurants.

Features

- Three Double Bedrooms
- Two Private Balconies
- Separate Kitchen
- Dual Aspect
- City Views
- Built In Storage

Canrobert Street,
London, E2



Total area (approx.): 68.1 sq. m (733.0 sq. ft)
Balcony area (approx.): 5.3 sq. m (57.0 sq. ft)