



## Pant Glas Court

Guide Price £400,000 - £425,000

- Guide Price £400,000 - £425,000
- Immaculate Semi-Detached Home
- Four Bedrooms
- Modern Kitchen/Diner
- Sitting Room Extension with Bi-Fold Doors
- Driveway for Multiple Vehicles
- Garage
- EPC Rating: Awaited



 4  1  2

**Pinkmove**

01633 746088  
team@pinkmove.co.uk



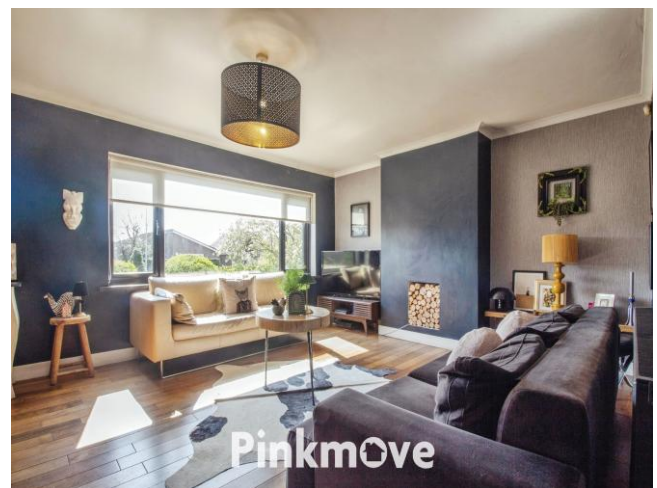
## About the property

Welcome to this immaculate spacious semi-detached property that's basking in charm and elegance. Currently listed for sale, this splendid home is ideal for families seeking a warm and welcoming abode.

Located in a sought-after location, the property is conveniently close to public transport links, local amenities, and schools - perfect for the busy family on the go, and notably, it falls within the Bassaleg School catchment area. This property ticks all the boxes with its beautifully updated bathroom with separate shower, tastefully presented interiors, and practical features like parking and a single electric garage.

From the landscaped gardens to the welcoming oak door, this modernised property boasts a total of 3 reception rooms, downstairs wc, and four generously proportioned bedrooms with beautiful surrounding views from the front of the house.

At the heart of the home, is the open-plan kitchen, bathed in abundant natural light and offers a congenial dining space, perfect for family meals and entertaining guests. The property's spacious main reception room provides the perfect setting for relaxation and family time. Adding to the charm and utility of this home, the kitchen/diner has been extended to include a sitting room with bifold doors that open out to the rear outdoor space, allowing for seamless indoor-outdoor living. The rear landscaped garden is a sun catcher's delight, offering a tranquil space to enjoy the outdoors.





## Accommodation

### Living Room

14' 1" x 19' 5" ( 4.29m x 5.92m )

### Kitchen/Diner

9' 5" x 19' 5" ( 2.87m x 5.92m )

### Conservatory

11' 1" x 8' 6" ( 3.38m x 2.59m )

### Office

5' 9" x 7' 8" ( 1.75m x 2.34m )

### Cloakroom

3' 2" x 4' 7" ( 0.97m x 1.40m )

### Bedroom 1

13' 4" x 11' ( 4.06m x 3.35m )

### Bedroom 2

9' 8" x 8' 5" ( 2.95m x 2.57m )

### Bedroom 3

9' 7" x 7' 9" ( 2.92m x 2.36m )

### Bedroom 4

9' 7" x 9' 7" ( 2.92m x 2.92m )

### Bathroom

9' 5" x 5' 5" ( 2.87m x 1.65m )

01633 746088

team@pinkmove.co.uk

**Pinkmove**

## Floorplan



Total area: approx. 122.7 sq. metres (1320.5 sq. feet)  
**22 Pant Glas Court**

## Important Information

Note while we endeavour to make our sales details accurate and reliable, if there is any point which is of particular interest to you, please contact the office and we will be pleased to confirm the position for you. We have not personally tested any apparatus, equipment, fixtures, fittings or services and cannot verify they are in working order or fit for their purposes. Nothing in these particulars is intended to indicate that carpets or curtains, furnishings or fittings, electrical goods (whether wired or not). Gas fires or light fittings or any other fixtures not expressly included form part of the property offered for sale. This computer generated Floorplan, if applicable, is intended as a general guide to the layout and design of the property. It is not to scale and should not be relied upon for dimensions. Tenure: We cannot confirm the tenure of the property as we have not had access to the legal documents. The buyer is advised to obtain verification from their solicitor or surveyor.

Peter Alan Limited is registered in England and Wales under company number 2073153, Registered Office is Cumbria House, 16-20 Hockliffe Street, Leighton Buzzard, Bedfordshire, LU7 1GN. VAT Registration Number is 500 2481 05. For activities relating to regulated mortgages and non-investment insurance contracts, Peter Alan Limited is an appointed representative of Connells Limited which is authorised and regulated by the Financial Conduct Authority. Connells Limited's Financial Services Register number is 302221. Most buy-to-let

