

# 2 Bed Apartment

£800 PCM

 Burgess Mill, Manchester Street, Derby, DE22 3GB



[www.phillipsandco.co.uk](http://www.phillipsandco.co.uk) | 01332 40 25 25

**Phillips  
& Co**  
EST. 2012  
MY PAD GROUP

# 2 Bed Apartment

# £800 PCM

 Burgess Mill, Manchester Street, Derby, DE22 3GB

AVAILABLE IMMEDIATELY - UNFURNISHED - £184.61 HOLDING DEPOSIT REQUIRED - FULL DEPOSIT OF £923.07 REQUIRED AT COMMENCEMENT OF TENANCY . A quite superb second floor character apartment of some 64 square metres, situated in this sought after Grade Two listed building, offering immense charm and character coupled with all of the trappings of modern living. Burgess Mill is located within secure gated grounds and offers easy access to the University of Derby as well as Derby City Centre. Double glazed with gas central heating. In brief; main entrance hall with stairs and lifts to all floors, entrance hall (With utility cupboard), light and spacious sitting room flowing through to a dining kitchen, two double bedrooms and bathroom with modern white suite. Outside is allocated car parking sited behind motorised electronic gates. Council tax band B. Energy rating B.

## Reception Hall

With staircase to all floors:-

## Entrance Hall

Having timber entrance door, laminated wood effect floor, full height utility cupboard (housing the space and plumbing for automatic washing machine) and large full height storage cupboard.

## Fitted Kitchen 11'10" x 8'10" (3.63 x 2.70)



Having a range of shaker style fitted wall, base and drawer units with laminated rolled edge working surfaces, inset stainless steel four burner electric hob with electric oven and grill, canopy extractor hood with down lighter, space for fridge freezer, inset stainless steel sink top with side drainer, hot and cold mixer tap, radiator, vinyl floor and open arch leading to the:-



## Light And Spacious Sitting Room 14'11" x 13'6" (4.57 x 4.12)



Having television and media connection points, radiator and two UPVC double glazed windows.



[www.phillipsandco.co.uk](http://www.phillipsandco.co.uk) | 01332 40 25 25

**Phillips  
& Co**  
EST. 2012  
MY PAD GROUP

# 2 Bed Apartment

# £800 PCM

 Burgess Mill, Manchester Street, Derby, DE22 3GB

## Principal Bedroom 10'9" x 9'8" (3.29 x 2.95)



Having radiator and UPVC double glazed window.

## Bedroom Two 10'9" x 10'2" (3.29 x 3.11)



Having radiator and UPVC double glazed window.

## Main Bathroom



Having modern white three piece suite

comprising; low centre flush wc, pedestal wash hand basin and panelled bath with chrome shower attachment and mixer tap over, glass shower screen, complimentary ceramic tiled splash backs with contrasting ceramic tiled floor, ceiling LED down lighters, extractor fan, shaver socket and radiator.

### Outside

The property stands in secure gated grounds with allocated car parking.

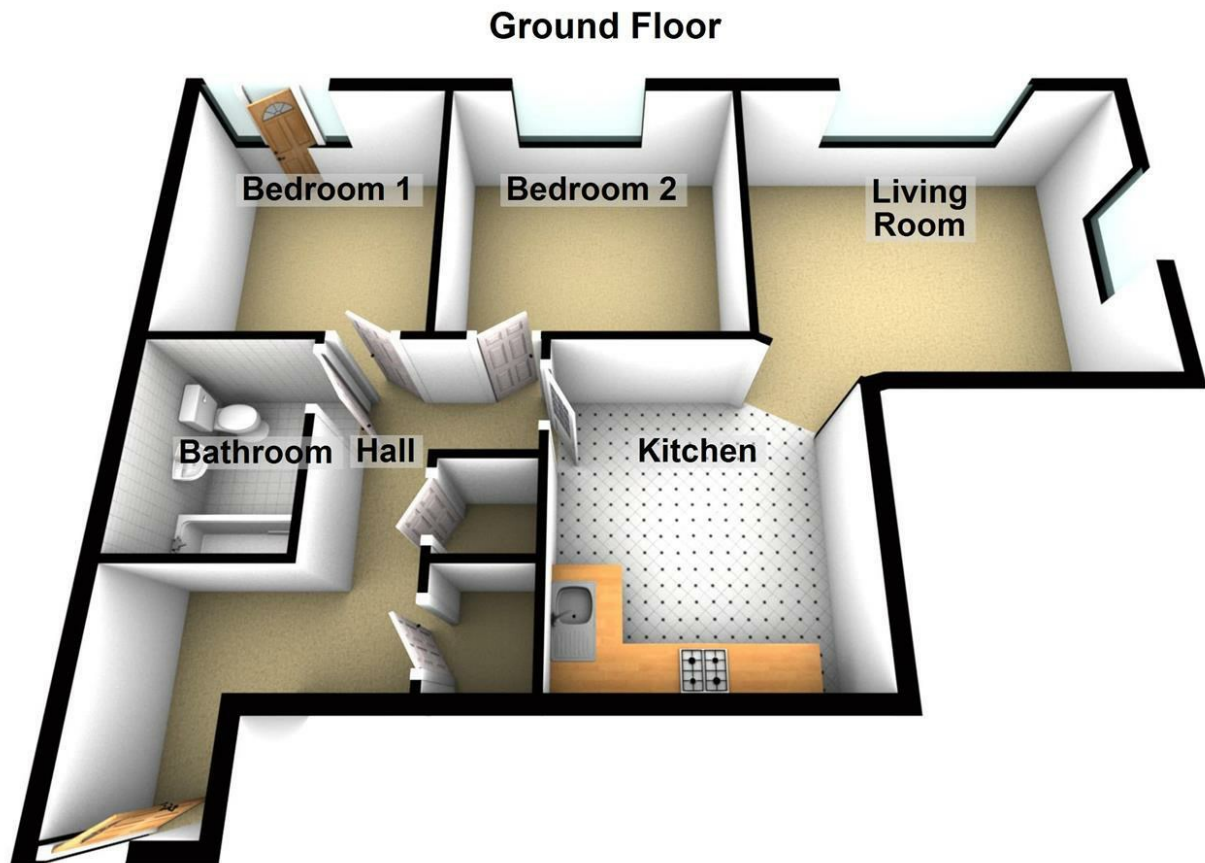
[www.phillipsandco.co.uk](http://www.phillipsandco.co.uk) | 01332 40 25 25

**Phillips  
& Co**  
EST. 2012  
MY PAD GROUP

# 2 Bed Apartment

# £800 PCM

 Burgess Mill, Manchester Street, Derby, DE22 3GB



You may download, store and use the material for your own personal use and research. You may not republish, retransmit, redistribute or otherwise make the material available to any party or make the same available on any website, online service or bulletin board of your own or of any other party or make the same available in hard copy or in any other media without the website owner's express prior written consent. The website owner's copyright must remain on all reproductions of material taken from this website.

Energy Efficiency Rating		Current	Potential
Very energy efficient - lower running costs			
(92 plus) A			
(81-91) B		81	82
(69-80) C			
(55-68) D			
(39-54) E			
(21-38) F			
(1-20) G			
Not energy efficient - higher running costs			
England & Wales		EU Directive 2002/91/EC	

[www.phillipsandco.co.uk](http://www.phillipsandco.co.uk) | 01332 40 25 25

