



## Bedford Road, W4

£575,000

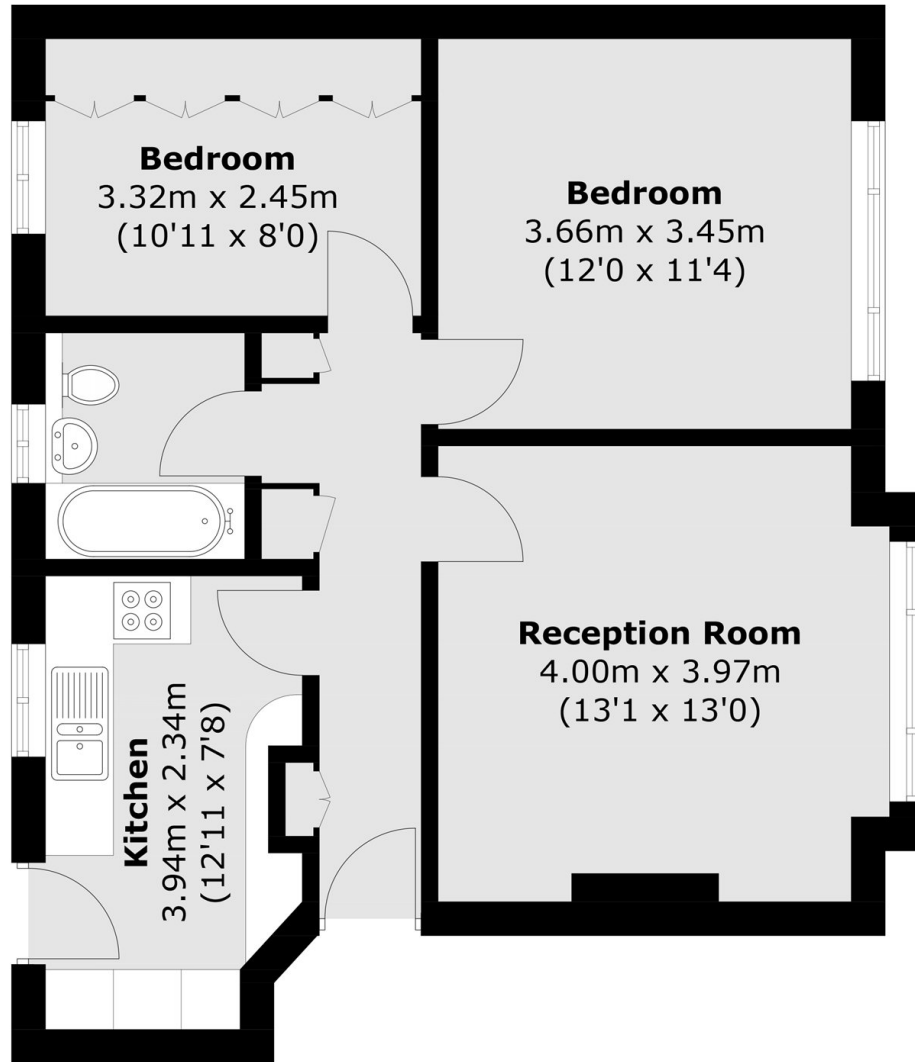
A well-presented top floor, two double bedroom apartment within this popular development in Bedford Park. With garage, modern kitchen, hot water and central heating included within the service charge and no onward chain.

St Catherine's Court is conveniently located close to Turnham Green and Stamford Brook Underground stations (District line). Chiswick High Road is nearby, offering a wide range of shops, cafés, and restaurants with easy access to the A4/M4 for driving.

### Features

- Bedford Park
- Top Floor
- Two Double Bedrooms
- Share Of Freehold
- Garage
- No Onward Chain

Bedford Road,  
London, W4



Total area (approx.): 57.6 sq. m (620.0 sq. ft)