



## Alexandra Park Road, N10

£775,000

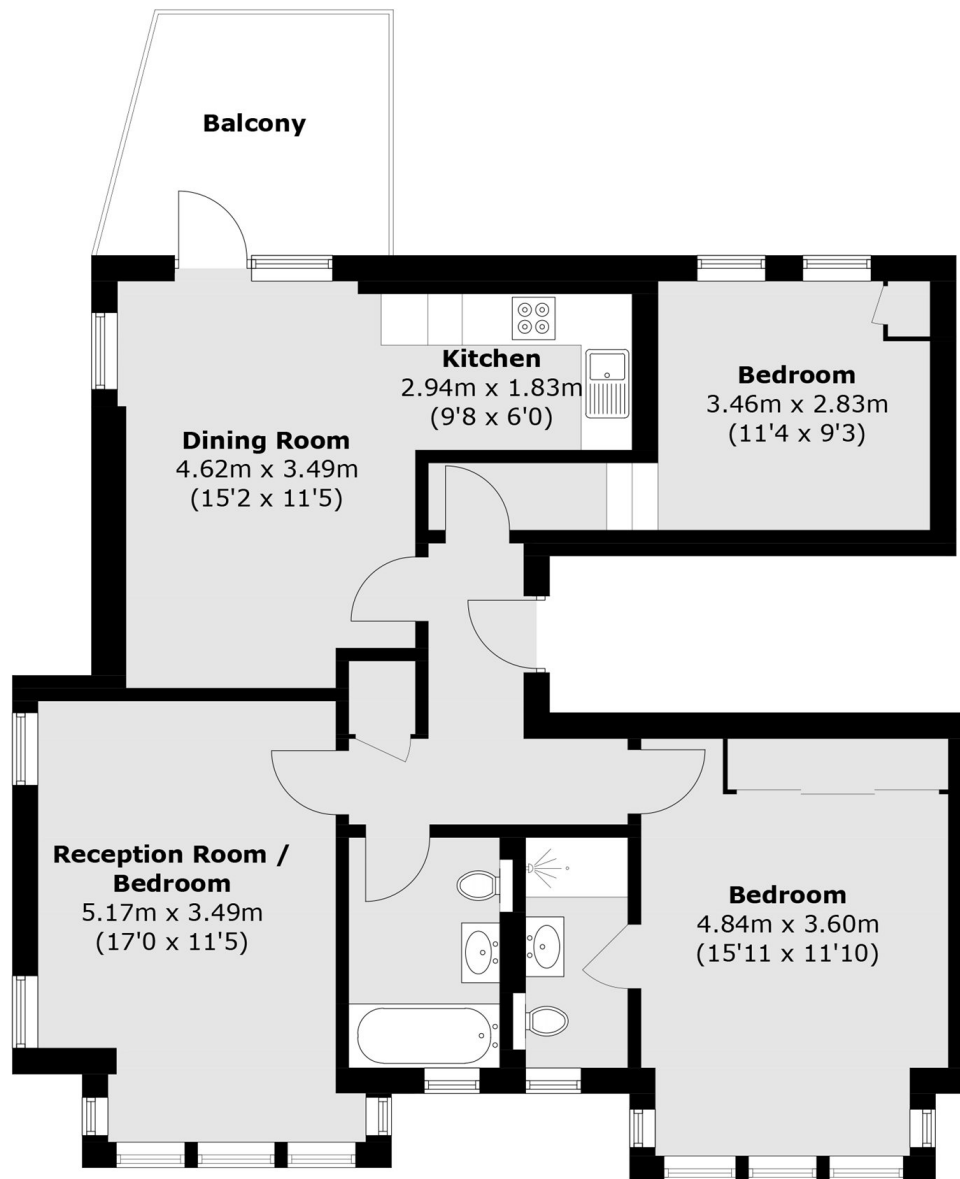
This well presented first floor conversion offers a blend of modern living and period charm. The property features three double bedrooms and an open plan reception/ kitchen leading onto a private South-Facing terrace looking over Alexandra Palace. It benefits from having high ceilings, large sash windows and great natural light throughout.

Situated within walking distance of Muswell Hill Broadway. Also close by is Alexandra Park and Palace with connections to the City (Moorgate and Old Street), within catchment of outstanding local schools

### Features

- Private Terrace
- Lots of Natural Light
- Period Features
- Transport Links
- First Floor Flat
- School Catchment

# Alexandra Park Road, London, N10



Total area (approx.): 86.2 sq. m (927.8 sq. ft)  
Balcony: 8.7 sq. m (93.6 sq. ft)