

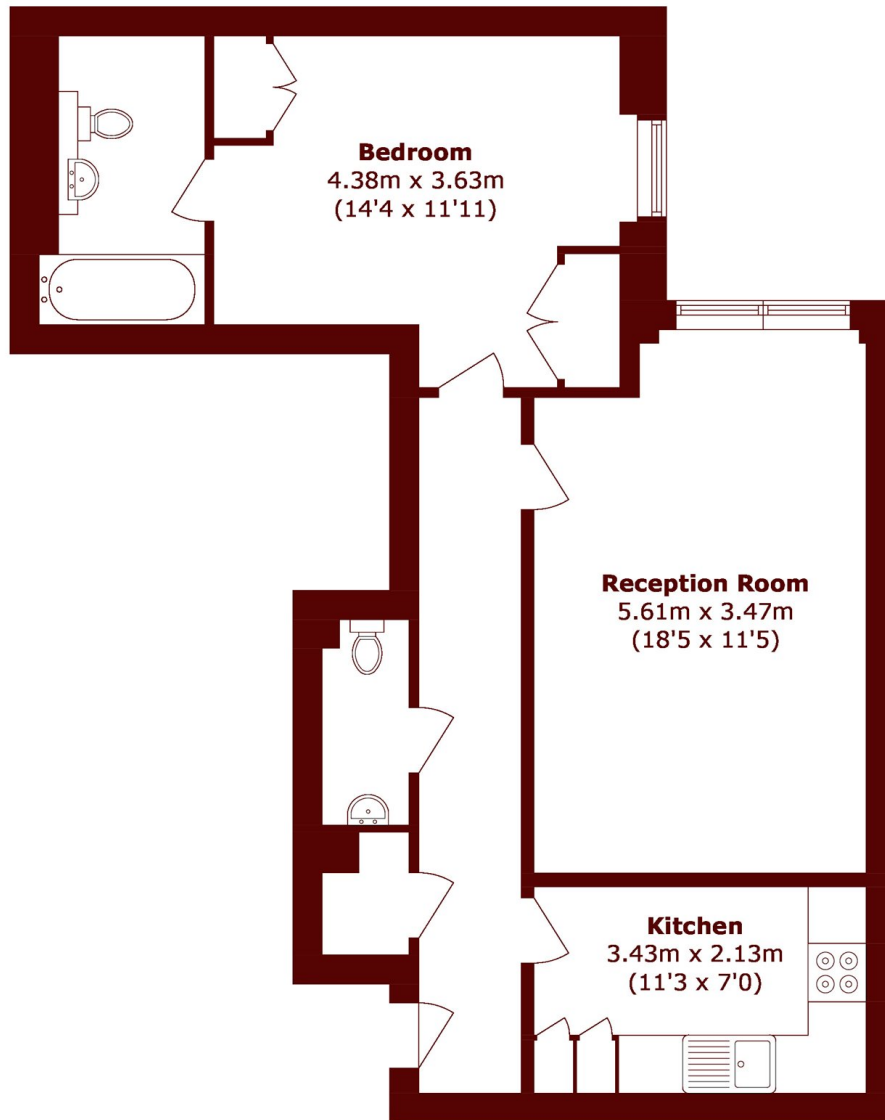


Oval Road, NW1

£450,000



- One Double Bedroom
- Residents Gymnasium
- Large Living Room
- En-Suite Bathroom
- Second WC
- No Onward Chain



Total area (approx.): 58.3 sq. m (627.5 sq. ft)

Marsh & Parsons Camden

27 Parkway, London, NW1

7PN

020 7244 2200