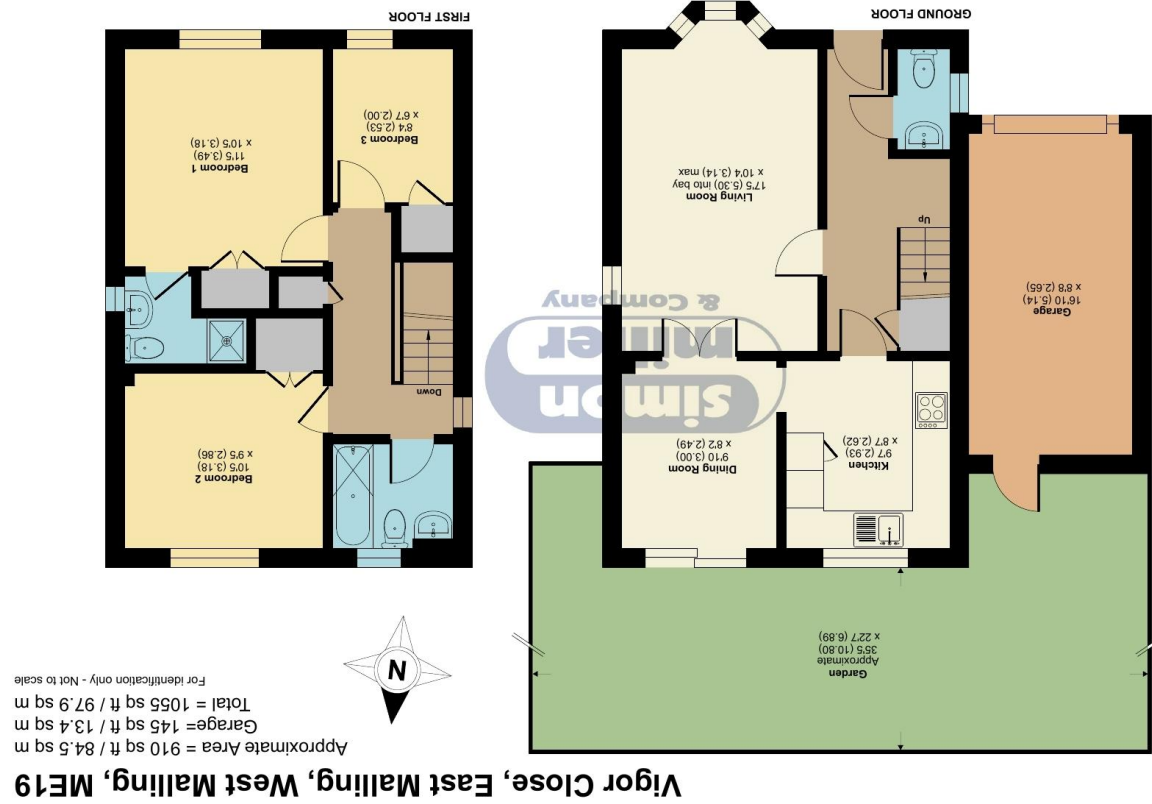


Floor plan produced in accordance with RICS Property Measurement 2nd Edition, incorporating International Property Measurement Standards (IPMS2 Residential). © ndtroom 2026. Produced for Simon Miller & Company. REF: 1454450



Vigor Close, East Malling, West Malling, ME19

8 Vigor Close, East Malling, West Malling, ME19 6FS **GUIDE PRICE: £450,000-£475,000** **EPC RATING: C**





A Fantastic three bedroom link detached family home situated towards the base of a cul de sac and backing directly on to fields to the rear.

Built by Hillreed Homes to their 'bredgar' design this property benefits from its own driveway and parking, plus an enclosed rear garden and this family home has been well maintained by the present owners. Neighbouring villages of West Malling and Larkfield are both approximately 1.5 Miles away catering for your everyday shopping needs, plus a wide range of wine bars, restaurants and West Malling mainline station. Please call the office to book an appointment to view.

**Freehold
EPC: C
Council Tax: D
Service Charge: £430 p/a
Full Fibre Broadband Available Now**



- **A THREE BEDROOM FAMILY HOME**
- **POPULAR SMALL CUL-DE-SAC DEVELOPMENT**
- **DRIVEWAY, PARKING AND GARAGE**

- **A FAMILY BATHROOM, EN-SUITE PLUS A W/C**
- **REAR GARDEN NONE-OVERLOOKED**
- **READY TO VIEW NOW**

TAKE A LOOK AT: WWW.SIMONMILLER.CO.UK

TH2998280426

Agents Note: All dimensions are approximate and quoted for guidance only. Reference to appliances, fixtures, fittings and services does not imply that they are necessarily in good condition, fit the purpose or are in working order. Interested parties are advised to obtain verification from their Solicitors as to the Freehold/Leasehold status of the property and confirmation regarding the condition of any fixtures and fittings included in the sale.

777-779 LONDON ROAD, LARKFIELD, AYLESFORD, KENT, ME20 6DE | 01732 875 706 | LARKFIELDSALES@SIMONMILLER.CO.UK