



Luscombe Maye
Since 1873

Church Street, Kingsbridge, TQ7 1DB

Guide Price £175,000

3 1 1



***** AUCTION SALE VIA BAMBOO AUCTIONS *****

Situated in the heart of Kingsbridge, 136 Church Street is a spacious three bedroom mid-terrace cottage enjoying a large garden and character features. The accommodation offers entrance hall, living room, dining, kitchen, shower room and access to the rear garden from the ground floor. Stairs lead to the first floor where three double bedrooms and a WC are located. Outside, the property has an initial courtyard garden with shared access leading the elevated rear garden, mainly laid to lawn with a range of sheds and a summer house.

On the market for the first time in over 30 years, 136 Church Street requires extensive renovation and improvements throughout.

FURTHER INFORMATION

Council Tax: Band B

Tenure: Freehold

Construction: Standard construction

Electric: Mains. Water: Mains. Heating: Electricity. Sewerage: Mains.
Broadband: ADSL. Mobile signal: <https://checker.ofcom.org.uk/>

Parking: No parking.

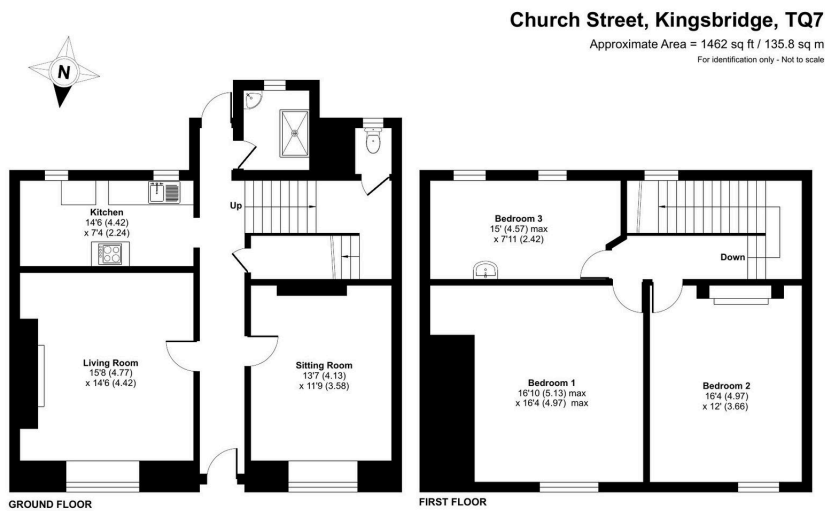
Local Authority: South Hams District Council, Follaton House,
Plymouth Road, Totnes TQ9 5NE. Tel: 01803 861234

METHOD OF SALE

The property is offered for sale by Traditional Online Auction (unless sold prior) via Bamboo Auctions.

The auction end date is 12 hours on 24th September 2025 and exchange will occur when the online timer reaches zero (provided the seller's reserve price has been met or exceeded).





Floor plan produced in accordance with RICS Property Measurement 2nd Edition, incorporating International Property Measurement Standards (IPMS2 Residential). © nrichcom 2025. Produced for Luscombe Maye. REF: 1337009



- 3-Bedroom Terraced Property • Large Garden
- Renovation Potential
- Central Town Location
- Character Period Features
- Spacious Living Accommodation

