



4 Broadleaf Meadow

Lowton, Warrington, WA3 2UR

£400,000

JonesPottsTaylor are delighted to present FOR SALE this beautifully presented, nearly new four bedroom detached property. Situated in a cul-de-sac position on the prestigious RedRow Estates development in Lowton, within close proximity to transport and network links, schools, shops and amenities. The property briefly comprises of; entrance vestibule, living room, an open plan kitchen / dining room with French doors opening to the rear garden, utility room and downstairs WC. To the first floor are four well proportioned double bedrooms, master bedroom benefiting from an ensuite shower room, two bedrooms benefitting from fitted wardrobes and a further family bathroom with three piece suite. Outside to the front is an open garden and driveway with access to an integral garage, whilst to the rear is a large enclosed private low maintenance garden.

Viewings for this property are a must to appreciate the properties peaceful location and high décor standard.

- Within NHBC Warranty Period
- Built In 2024 - RedRow Estates
- Possible No Onward Chain
- Sought After Cul-De-Sac Location
- Four Double Bedrooms
- Single Integral Garage & Driveway

Viewing

Please contact our Jones Potts Taylor Office on 01942 368600 if you wish to arrange a viewing appointment for this property or require further information.



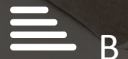
4



3

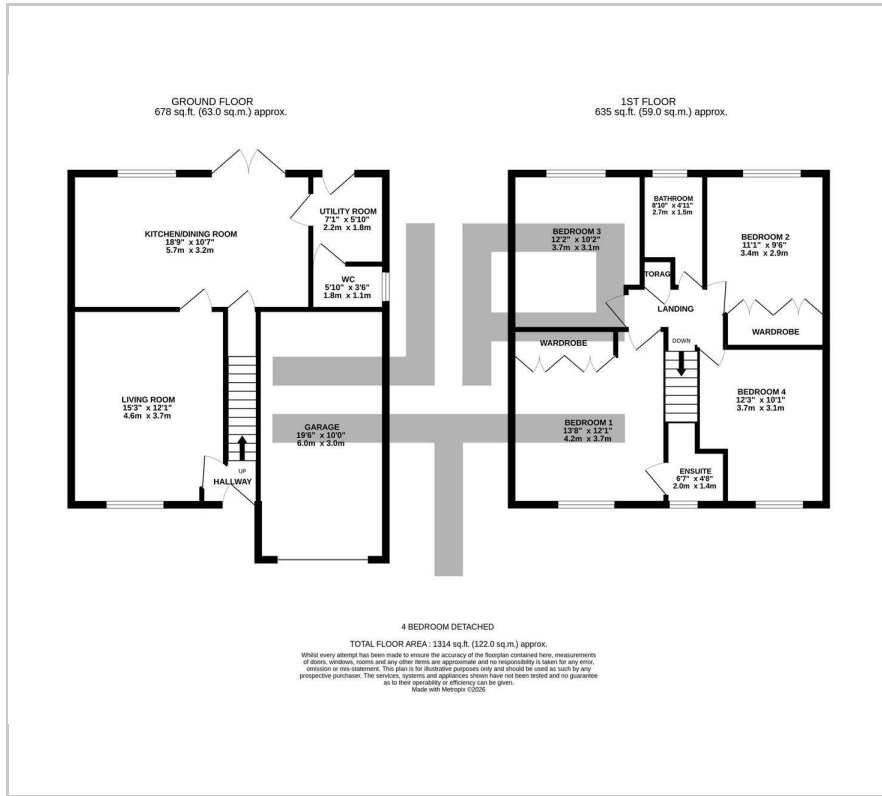


1



B

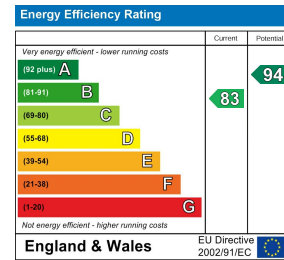
Floor Plan



Area Map



Energy Efficiency Graph



These particulars, whilst believed to be accurate are set out as a general outline only for guidance and do not constitute any part of an offer or contract. Intending purchasers should not rely on them as statements of representation of fact, but must satisfy themselves by inspection or otherwise as to their accuracy. No person in this firm's employment has the authority to make or give any representation or warranty in respect of the property.