



## 37 Croslands Park Barrow-In-Furness LA13 9NH

**Offers In The Region Of £575,000**

Located in one of the area's most prestigious and sought-after settings, this substantial six-bedroom detached home is rich in character and offers a rare opportunity to create a truly special family residence. Set within generous, wraparound gardens and approached via off-road parking, the property enjoys a private and peaceful position. Full of original features and period charm, the home offers spacious accommodation throughout. With its timeless appeal, large garden, and enviable location, this is a unique chance to enhance a distinguished home in an exceptional setting.







<b>Entrance Hall</b>	<b>Cloak Room</b>	<b>Bedroom Two</b>	<b>First Floor WC</b>
	7'1" x 5'11"	17'0" x 19'10"	7'8" x 2'10"
<b>Reception</b>	<b>Ground Floor WC</b>	<b>Bedroom Three</b>	<b>Attic Room One</b>
16'9" x 21'10"	5'4" x 2'8"	13'3" x 17'8"	10'2" x 12'4" max into eaves
<b>Dining Room</b>	<b>Utility Room One</b>	<b>Bedroom Four</b>	<b>Attic Room Two</b>
17'0" x 19'10"	8'4" x 6'4"	12'4" x 13'2"	6'5" x 14'1"
<b>Study</b>	<b>Boiler Room</b>	<b>Bedroom Five</b>	<b>Detached Garage</b>
12'3" x 13'2"	8'4" x 4'9"	13'6" x 11'0"	19'10" x 17'1"
<b>Kitchen Diner</b>	<b>Utility Room Two</b>	<b>Bedroom Six</b>	
17'6" x 12'2"	12'1" x 13'7";	12'0" x 6'9"	
<b>Pantry</b>	<b>Bedroom One</b>	<b>Bathroom</b>	
7'6" x 6'4"	18'0" x 16'11"	13'5" x 7'6"	





As you approach the property, you're welcomed into a charming vestibule, a perfect transitional space that sets the tone, for what's to come. A stained glass door opens into a truly, grand entrance hall, where traditional elegance meets impressive scale. The eye is immediately drawn to the herringbone wood flooring, beautifully laid and full of character, paired with a central carpeted runner that leads your gaze directly to the stunning 'C'-shaped staircase. This sweeping architectural centrepiece rises gracefully, anchoring the space and hinting at the scale and craftsmanship found throughout the home. From the hallway, you enjoy direct access to the main living areas.

To one side, a generously proportioned reception room offers a warm and inviting space that blends character with comfort. A generous bay window floods the room with natural light, highlighting the intricate cornice ceiling panelling that adds period charm overhead. At its heart, a wood-burning stove sits neatly within the fireplace—perfect for cosy evenings—creating a stylish and functional focal point in this beautifully proportioned room.

Situated adjacent to the reception room, the dining room is equally elegant, offering a refined space for both everyday meals and formal entertaining. A striking rounded bay window adds architectural interest and brings in soft natural light, while the cornice ceiling panelling enhances the room's classic charm. Spacious and well-positioned, it flows beautifully, creating a seamless connection for hosting and family life.

A dedicated study provides a quiet retreat ideal for working from home, while the spacious kitchen lies just beyond. A discreet hallway branches off the main space, leading to a series of highly practical rooms including the boiler room, ground floor WC, and separate utility areas, keeping the functional elements of the home tucked neatly away from the primary living spaces.

Ascending the stairway, you're greeted by a spacious landing filled with natural light streaming through beautiful stained glass windows, casting warm, colourful hues across the space. The landing serves as the central hub, providing access to all six bedrooms, each offering generous proportions and high ceilings that hint at the property's former grandeur.

Step into the first bedroom, a beautifully proportioned space that immediately impresses with its generous size. Traditional detailed cornice enhances the period charm, drawing the eye upward and adding an elegant architectural flourish. The room is bathed in soft, warm light, thanks to the large bay window that looks out over the front garden, offering a peaceful, leafy view and inviting natural daylight to flood the space. The walls are painted a soothing blush pink, creating a calm, welcoming tone that is both modern and timeless. A striking pink floral feature wall adds character and a touch of romantic flair. At the centre of the room stands a tall, high fireplace mantle piece—a handsome focal point that adds historic charm. Along one wall, built-in cream cupboards provide ample storage while blending seamlessly with the room's elegant aesthetic. This front-facing bedroom is a tranquil and sophisticated retreat.

The second bedroom is another generously sized and beautifully appointed space, echoing the period elegance found throughout the home. Positioned at the front of the property, it features high ceilings adorned with detailed traditional cornice, lending a graceful, timeless feel. Soft pale blue walls create a calm, airy ambiance, enhanced by a unique rounded bay window set in the corner. This charming architectural feature not only adds character but also frames lovely views of the front garden, filling the room with natural light throughout the day.

Both Bedroom Three and Bedroom Four are spacious double rooms, each thoughtfully positioned to the side and rear of the property, offering a quiet and private aspect ideal for restful retreats or flexible family living. Each room features classic picture rails, a nod to the property's traditional character. The proportions in both rooms allow for comfortable double beds along with additional furnishings such as wardrobes or desks. With their classic features and generous sizes, both rooms provide charm, comfort, and flexibility to suit a range of household needs.

Bedroom Five and Bedroom Six are well-proportioned rooms, offering flexibility for a variety of uses, whether as children's bedrooms, home study's or hobby rooms. Both rooms are thoughtfully laid out to maximise space and comfort, with natural light creating a bright and welcoming feel.

To the second-floor you will find two generously sized attic rooms, offering excellent potential for a variety of uses.

This delightful wrap-around garden offers a tranquil and private outdoor retreat, combining beauty with functionality. Mature shrubberies and a variety of established trees provide natural screening and year-round greenery, while neatly maintained lawned areas create open space for relaxation or play. A spacious patio section offers the perfect spot for al fresco dining, entertaining guests, or simply enjoying the garden views. The layout enhances the sense of seclusion and flow around the property, making it a truly inviting and versatile outdoor space.



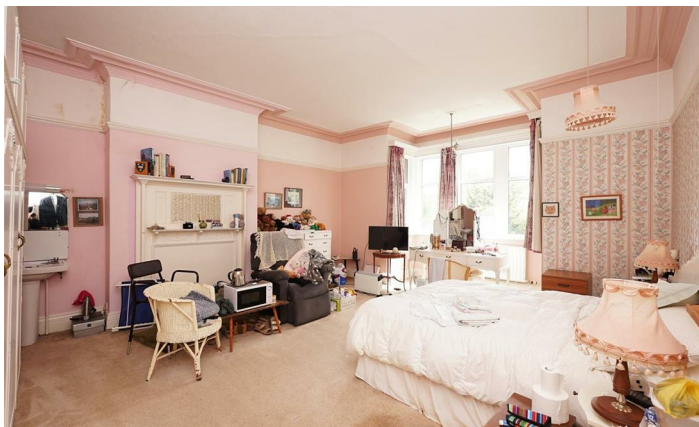
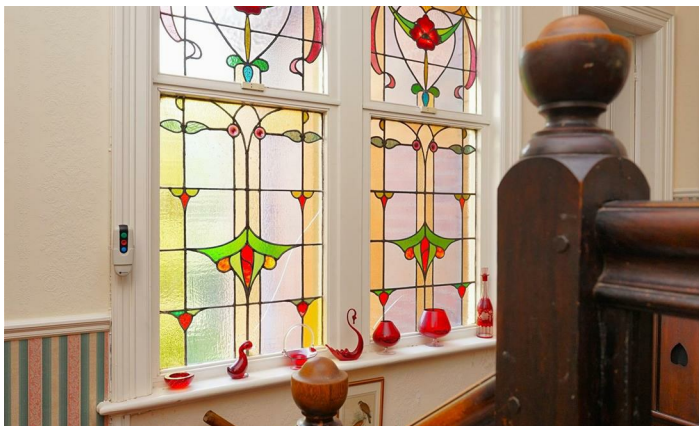










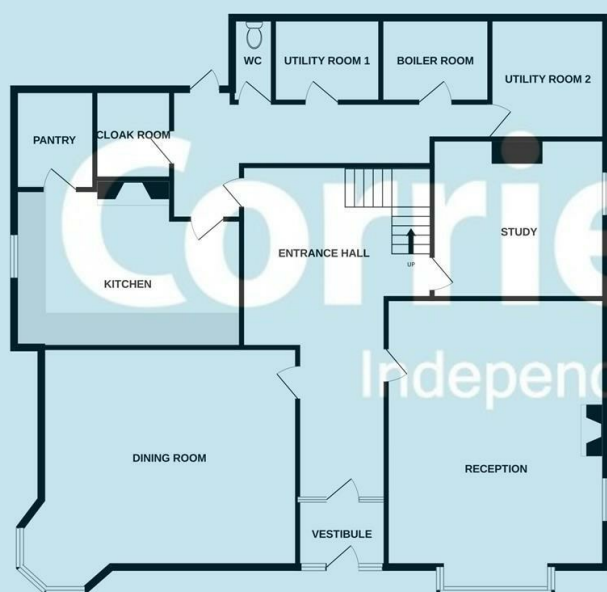








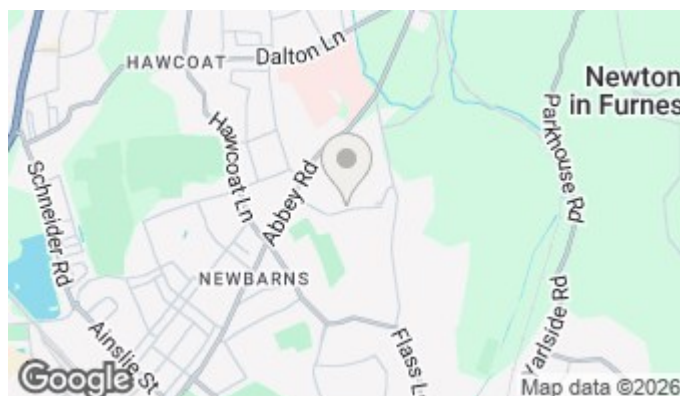
GROUND FLOOR



1ST FLOOR



Whilst every attempt has been made to ensure the accuracy of the floorplan contained here, measurements of doors, windows, rooms and any other items are approximate and no responsibility is taken for any error, omission or mis-statement. This plan is for illustrative purposes only and should be used as such by any prospective purchaser. The services, systems and appliances shown have not been tested and no guarantee as to their operability or efficiency can be given.  
Made with Metropix ©2025



Corrie and Co aim to sell your property at the best possible price in the shortest possible time. We have developed a clear marketing strategy to ensure that your property is fully exposed to the local, regional and national market place and we are confident that we can provide a marketing service second to none. Our Sales Team offer:

- Full colour contemporary sales literature with floorplans
- A full programme of local / regional advertising and promotion on the Corrie and Co and Rightmove websites
- 24/7 promotion in our Barrow, Ulverston and Millom offices
- Professional viewing service and prompt feedback
- Experienced, friendly staff
- Eye catching 'For Sale' board

To ensure your move is looked after, we can help you with an Energy Performance Certificate and arrange a free mortgage and finance review. We also provide a competitive No Sale – No Fee conveyancing service with well known and trusted local solicitors. Our valuation and sales advice is impartial, completely free with no obligation.

Unlike many High Street Estate Agency chains, Corrie and Co are wholly independent and can therefore recommend the mortgage and lender that is most suitable for your needs. Our aim is to provide quality advice and expertise at all times so that you can make an informed decision every step of the way.

