

Boardwalk

Willada Close

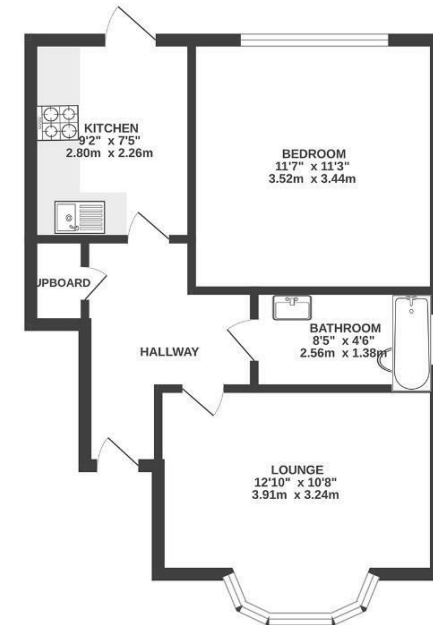
, BRISTOL

Willada Close BEDMINSTER

APPROXIMATE FLOOR AREA
40 SQM / 427 SQFT



GROUND FLOOR



Boardwalk

Willada Close , BRISTOL

£

£250,000



BS3 5NG

zzz

1 Bedrooms



1 Bathrooms

“Our favourite thing about living here has to be the garden - it’s such a generous size for a one bedroom flat and we spend many happy hours outdoors in the Spring & Summer, bbq’s with friends, listening to the birds, growing flowers and veggies, sunbathing and yoga on the grass. The garden isn’t overlooked at all and the sky feels huge. It’s like our own private oasis”

