



Laurels Canterbury Road, Lyminge - CT18 8HU
£675,000

Laurels, Canterbury Road, Lyminge, Folkestone, CT18

Approximate Area = 1993 sq ft / 185.1 sq m

Limited Use Area(s) = 105 sq ft / 9.7 sq m

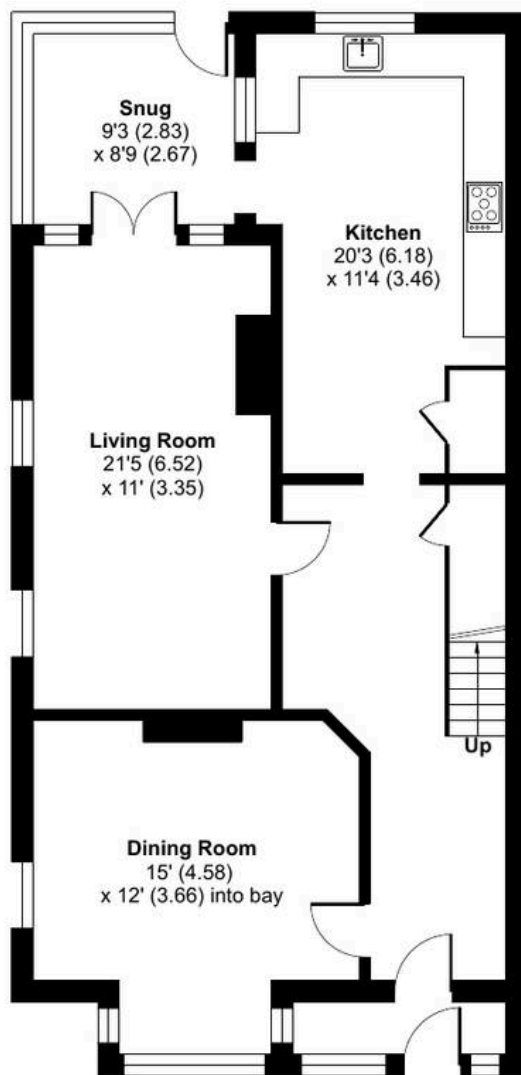
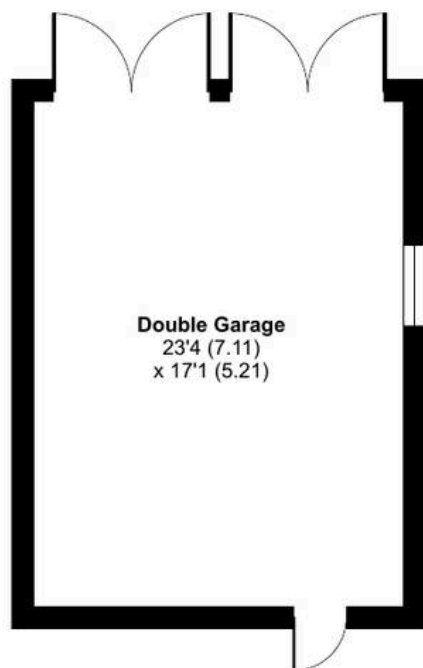
Garage = 399 sq ft / 37 sq m

Total = 2497 sq ft / 231.8 sq m

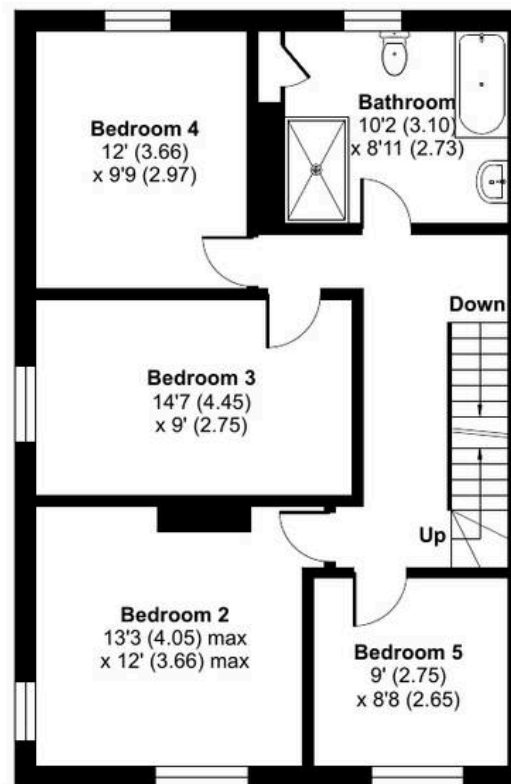
For identification only - Not to scale



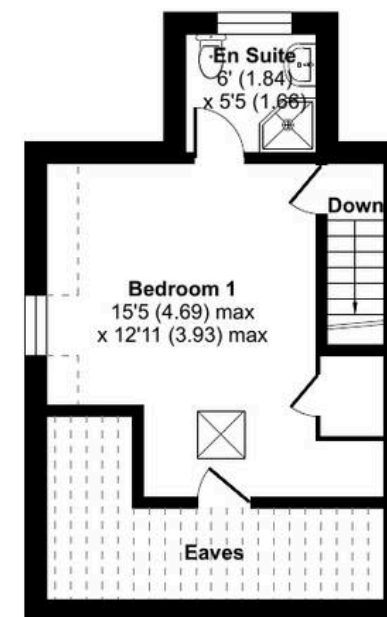
Denotes restricted head height



GROUND FLOOR



FIRST FLOOR



SECOND FLOOR





Laurels Canterbury Road

Lyminge, Folkestone

Beautifully presented throughout, this substantial family home offers an abundance of space and versatility, perfectly suited to modern family living. Set in the heart of the vibrant village of Lyminge, the property combines generous accommodation with a warm and welcoming atmosphere. The spacious living room has French doors leading to the snug/conservatory which provides excellent space for relaxation, while the impressive kitchen forms the true hub of the home, ideal for everything from busy family breakfasts to entertaining friends and family. With five bedrooms including the principal suite occupying the entire second floor, there is ample room for growing families and visiting guests alike. Outside, the attractive gardens offer a peaceful retreat with a patio and neatly maintained lawn, complemented by a double barn-style garage and off-road parking. Enjoying a desirable village setting with excellent local amenities, beautiful countryside walks and convenient transport links nearby, this is a home that offers both exceptional living space and an enviable lifestyle. No chain

Council Tax band: E

Tenure: Freehold

EPC Energy Efficiency Rating: D

EPC Environmental Impact Rating: D





Laing Bennett

Laing Bennett Ltd, The Estate Office, 8 Station Road – CT18 8HP

01303 863393

info@laingbennett.co.uk

www.laingbennett.co.uk/

DISCLAIMER – These details are for guidance only and do not form part of an offer or contract. Measurements are approximate. Laing Bennett Ltd and the Vendor/Landlord accept no liability. Services and appliances are untested. Applicants must make their own checks. Items shown may not be included. No staff have authority to give warranties.