



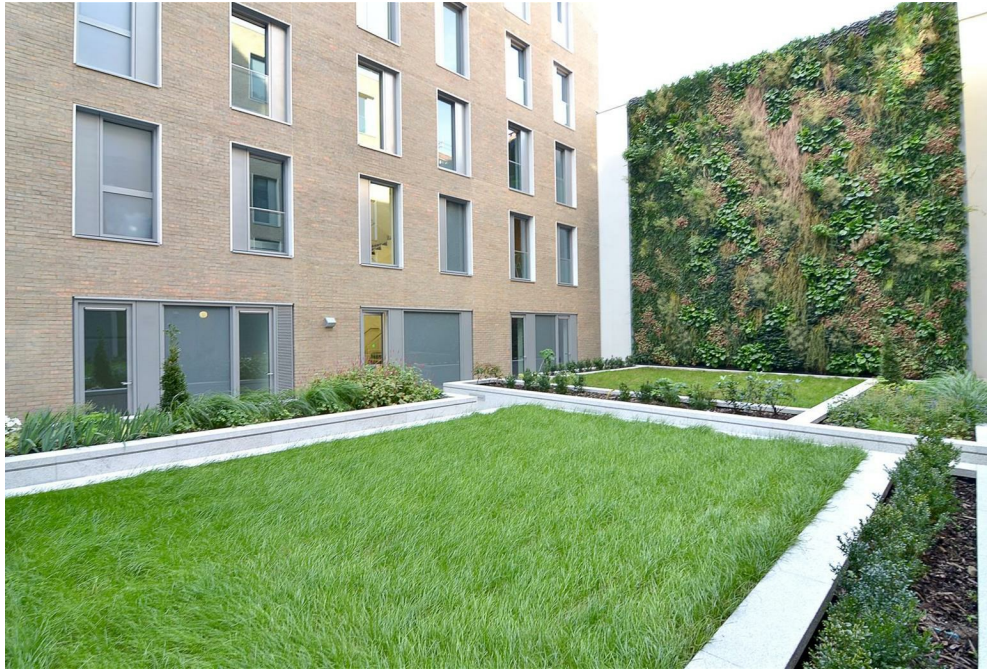
30 Portman Close,
Marylebone, W1H

£2,100 Per Week,

NAPIER WATT

T: 0207 935 0011
E: enquiries@napierwatt.co.uk
W: napierwatt.co.uk

35 Berkeley Square, Mayfair, London, W1J 5BF







Description

A contemporary, light and airy three bedroom, three bathroom apartment situated on the first floor of this development that boasts 24-hour portage, lifts and communal garden, air-conditioning and parking (by separate negotiation). The property offers a 42ft open plan living room kitchen, Juliette balcony, master bedroom with en-suite bathroom and dressing room, a second double bedroom with en-suite, third bedroom and separate family shower room. Parking by separate negotiation. This desirable building is a short walk to Bond Street station as well as all the amenities, shops and restaurants of Marylebone and Oxford Street.

3 Bedrooms : 3 Bathrooms : Juliette Balcony : Porter : AC : Lift : EPC Rating B : Westminster Council Tax Band G

Key Features

- 24-HOUR PORTER
- AIR CONDITIONING
- SECURE PARKING SEP NEG
- STYLISH OPEN PLAN KITCHEN
- LIFTS
- FLOOR TO CEILING WINDOWS
- WOOD FLOORS

Terms

Fees & Charges: Tenancies exceeding £100,000 Per annum £480 inc VAT, Tenancies where a company is a tenant £480 Inc VAT.



IMPORTANT: We would inform prospective purchasers that these sales particulars have been prepared as a general guide only. A detailed survey has not been carried out, nor the services, appliances and fittings tested. Room sizes should not be relied upon for furnishing purposes and are approximate. If floor plans are included, they are for guidance only and illustration purposes only and may not be to scale. If there are any important matters likely to affect your decision to buy, please contact us before viewing the property.