



Marmont Road, SE15 | £375,000

02087029666

[peckham@pedderproperty.com](mailto:peckham@pedderproperty.com)

**pedder**  
We live local



# In General

- Ground floor flat
- One bedroom
- Private west facing garden
- Basement
- Total area: 437sqft. (excluding basement)
- 0.6mi to Queens Road Peckham Station
- 0.6mi to Peckham Rye Station

# In Detail

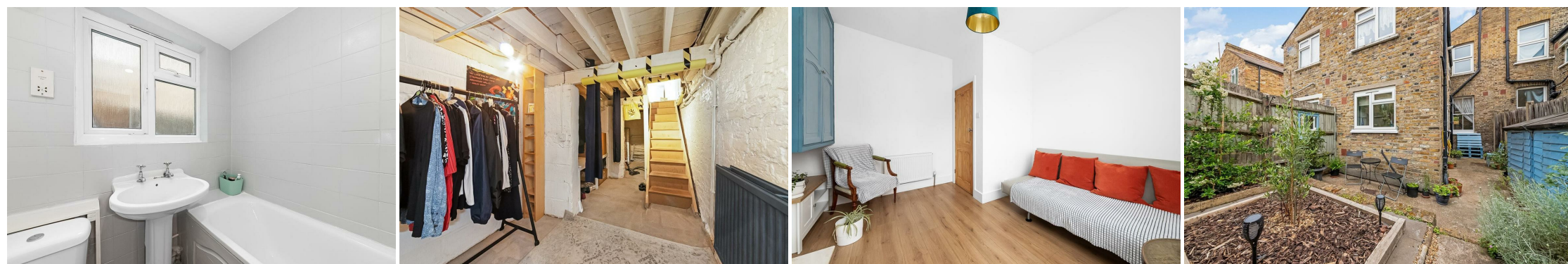
Set on the ever-popular Marmont Road in the heart of Peckham, this charming one-bedroom ground floor garden flat is a fantastic opportunity for first-time buyers or investors looking to secure a home in one of Southeast London's most sought-after neighbourhoods.

The property features a bright and well-proportioned reception room, a generous double bedroom and three-piece bathroom suite. The spacious kitchen has been cleverly altered by the current owners to accommodate space for a dining table and it's through which that you access the private West facing garden - providing a peaceful retreat ideal for entertaining or simply unwinding after a busy day.

Marmont Road is perfectly positioned to enjoy everything Peckham has to offer. Just a short walk away, you'll find the independent cafés, bars and restaurants of Bellenden Road, Rye Lane and Peckham Levels, alongside local favourites such as Frank's Café and the vibrant food scene around Peckham Rye. Green open spaces including Peckham Rye Park and Common are also nearby.

Transport links are excellent, with Peckham Rye Station offering fast and frequent services into London Bridge, Victoria, Blackfriars and Clapham Junction, as well as access to the Overground network. Nunhead and Queens Road Peckham stations are also within easy reach.

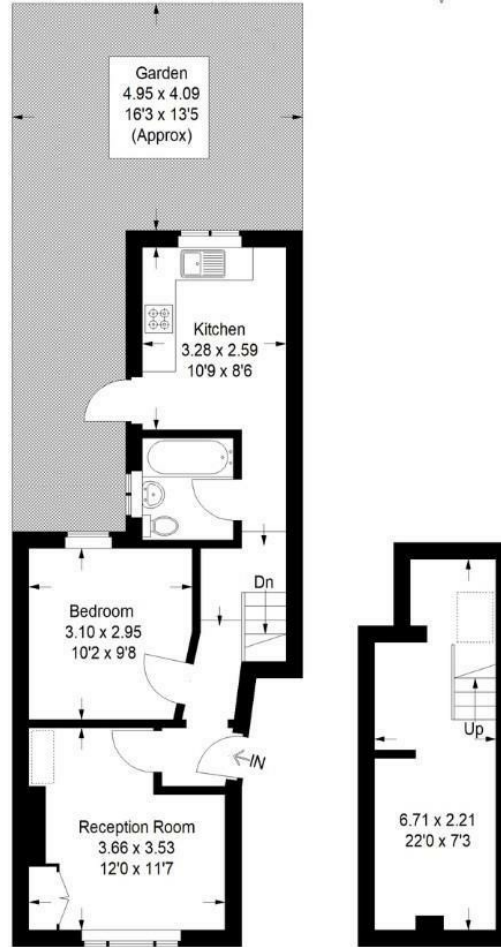
EPC: D (from Oct 2020, valid till 2030) | Council tax band: B | Leasehold: 92 years remaining | GR: £10 pa | SC: 793.73 pa | BI: £588.12 pa



# Floorplan

Marmont Road , SE15

Approximate Gross Internal Area  
55.4 sq m / 596 sq ft

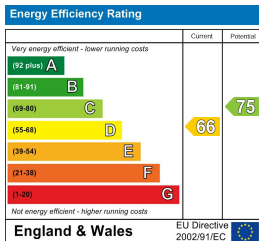


Ground Floor

Basemant

Copyright www.pedderproperty.com © 2026

These plans are for representation purposes only as defined by RICS - Code of Measuring Practice. Not drawn to Scale. Windows and door openings are approximate. Please check all dimensions, shapes and compass bearings before making any decisions reliant upon them.



Pedder Property Ltd trading as Pedder for themselves and for the vendor/landlord of this property whose agents they are, give notice that (1) these particulars do not constitute any part of an offer or contract, (2) all statements contained within these particulars are made without responsibility on the part of Pedder or the vendor/landlord, (3) whilst made in good faith, none of the statements contained within these particulars are to be relied upon as a statement of representation or fact, (4) any intending purchaser/tenant must satisfy him/herself by inspection or otherwise as to the correctness of each of the statements contained within these particulars, (5) the vendor/landlord does not make or give either Pedder or any person in their employment any authority to make or give representation or warranty whatsoever in relation to this property.