

OFFERS OVER

£279,000

Springfield Way

Millhouse Green, S36 9AH

The Pennine Property Group
For Sale

SPRINGFIELD WAY

PROPERTY SUMMARY

This beautifully presented four-bedroom semi-detached home is set over three generous levels on the ever-popular Springfield Way. Built in 2010 and renovated to a high standard, this is a property that feels instantly polished, offering stylish interiors, modern comfort and a layout that suits a wide range of buyers.

4



2



1

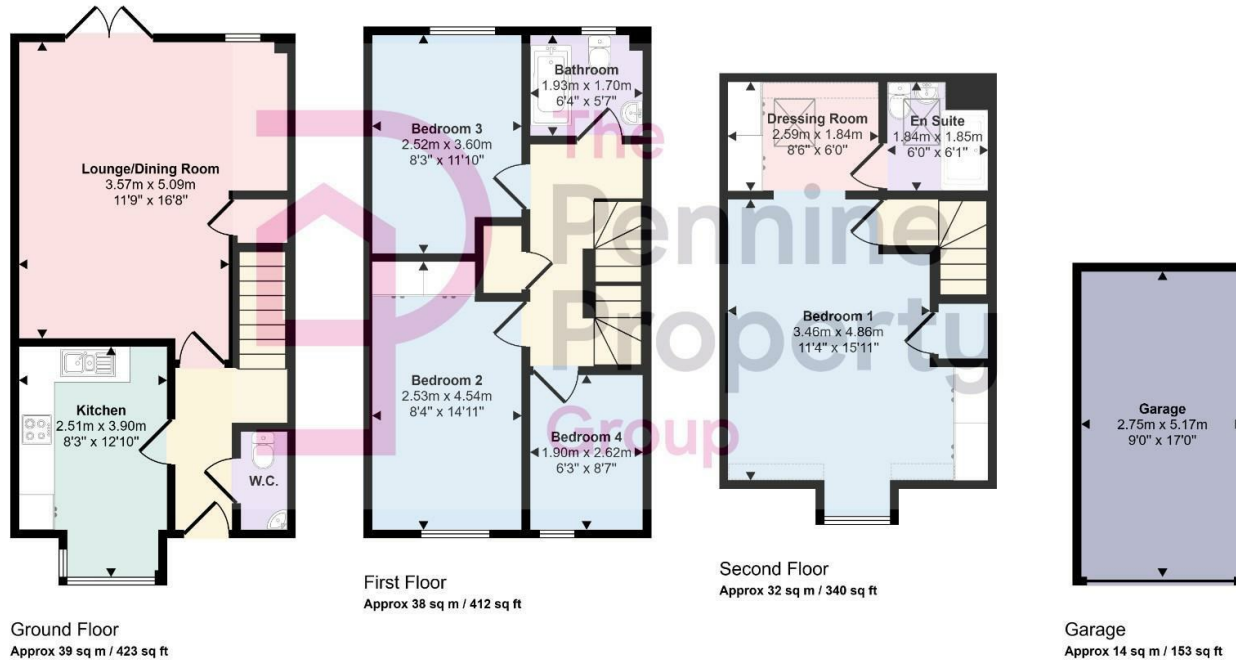








Approx Gross Internal Area
123 sq m / 1328 sq ft



Denotes head height below 1.5m

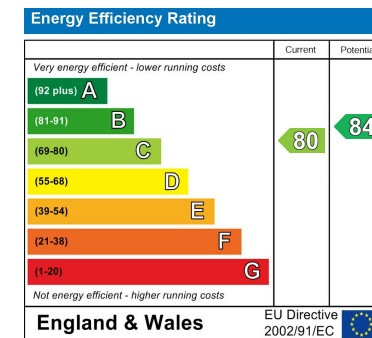
This floorplan is only for illustrative purposes and is not to scale. Measurements of rooms, doors, windows, and any items are approximate and no responsibility is taken for any error, omission or mis-statement. Icons of items such as bathroom suites are representations only and may not look like the real items. Made with Made Snappy 360.

LOCAL AUTHORITY
BMBC

TENURE
Freehold

COUNCIL TAX BAND
D

VIEWINGS
By prior appointment only



Agents Note: Whilst every care has been taken to prepare these particulars, they are for guidance purposes only. All measurements are approximate and are for general guidance purposes only and whilst every care has been taken to ensure their accuracy, they should not be relied upon and potential buyers/tenants are advised to recheck the measurements

OFFICE ADDRESS
12 St Marys Street
Penistone
Sheffield
South Yorkshire
S36 6DT

OFFICE DETAILS
01226 766755
info@pennineproperty.co.uk