



SCAN ME



17 Albacore Avenue, Warsash, Southampton, Hampshire, SO31 9BP.



For more information

01489 570019

www.sbk4homes.com

Popular Location, Generous Accommodation and Everyday

Practicality

Positioned within the ever-popular location of Albacore Avenue, this well-presented three-bedroom end of terrace home offers a superb balance of space, practicality, and everyday comfort.

The property welcomes you into an entrance hallway, with a convenient downstairs WC situated to the right, ideal for modern family living. From here, the home flows into a separate living room, providing a comfortable and versatile space for both relaxing and entertaining.

To the rear, the kitchen/dining area forms the heart of the home, offering ample space for cooking and dining, along with direct access out to the garden, creating an easy connection between indoor and outdoor living.

Upstairs, the property features three well-proportioned bedrooms, offering flexibility for families, guests, or those working from home. These are served by a family bathroom, completing the first-floor accommodation.

Externally, the property benefits from a garden space that is well suited to both relaxing and socialising. In addition, there is ample parking available, along with the added benefit of a garage located in a nearby block, providing further convenience and storage.

Albacore Avenue remains a consistently sought-after location, popular for its strong community feel and convenient access to local amenities, schools, and transport links, making it an excellent choice for a wide range of buyers.



£329,950

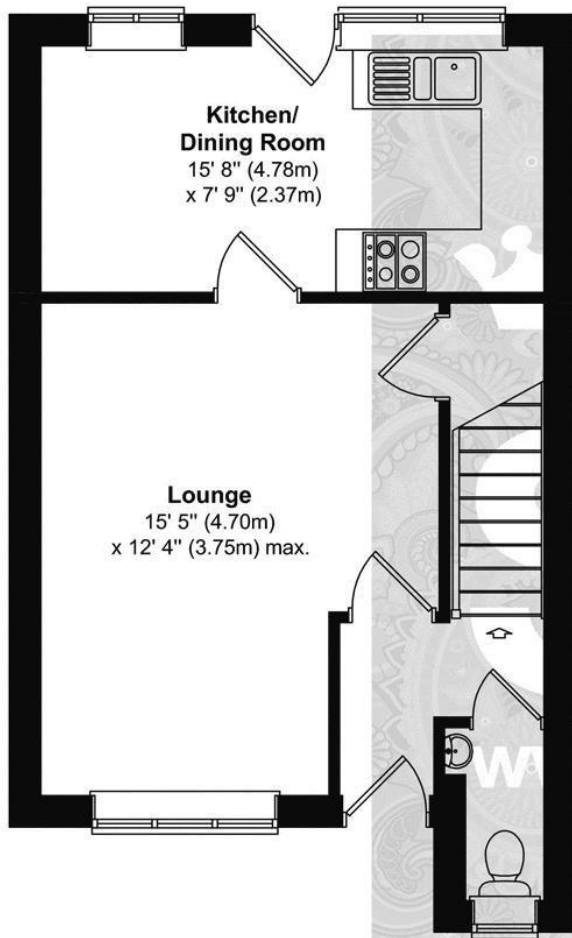
FREEHOLD

Spacious End-Terrace Home with Garden and Garage

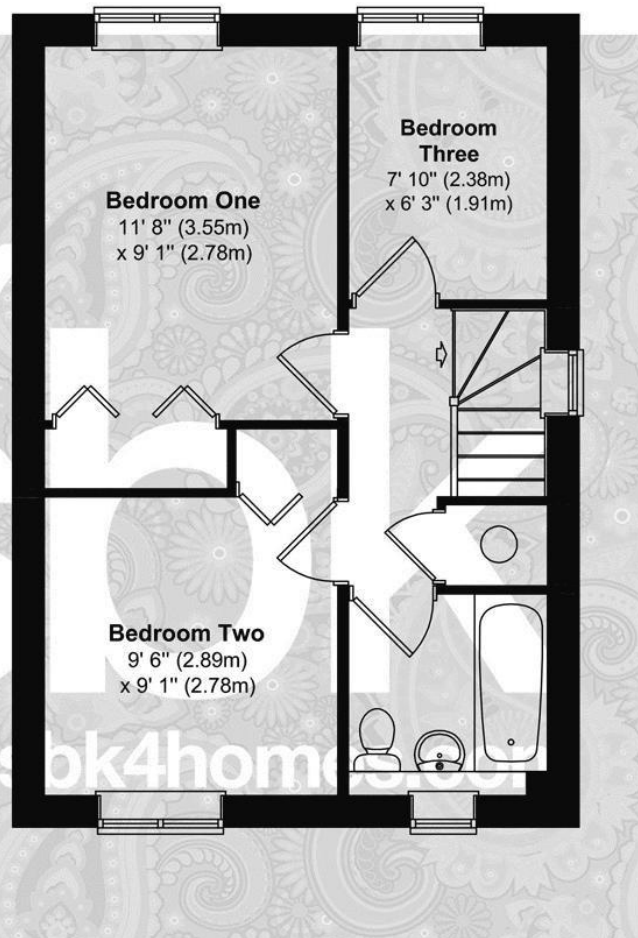
- Well-presented three-bedroom end of terrace home
- Located within the sought-after Albacore Avenue
- Well-balanced layout suited to modern family living
- Separate living room providing a comfortable reception space
- Kitchen/dining area with direct access to the garden
- Downstairs WC positioned off the entrance hallway
- Three well-proportioned and versatile bedrooms
- Family bathroom serving the first floor
- Garden space ideal for both relaxing and social use
- Ample parking and garage in a nearby block



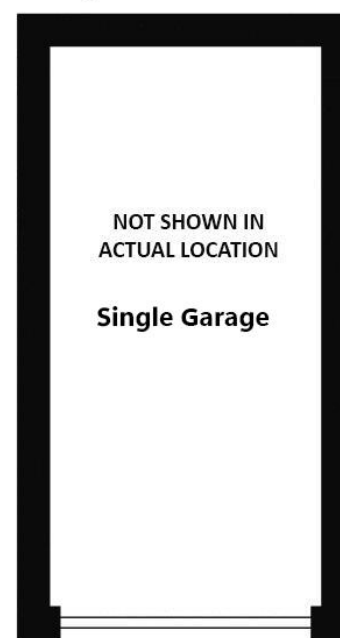
Ground Floor



First Floor



Garage



Approx. Gross Internal Floor Area 747 SQ FT 69 SQ Metres (Excluding Garage)

Whilst every attempt has been made to ensure the accuracy of the floor plans, measurements of doors, windows and rooms are approximate and no responsibility is taken for any error, omission or mis-statement. These plans are for representation purposes only and should be used as such. The services, systems and appliances listed in this specification have not been tested by Agency Assist and no guarantee as to their operating efficiency can be given.

Supplementary Information

Council Tax:
Band - C
Payable £2,018.27
April 2026 - March 2027
Fareham Borough Council.

EPC:
Band - D
EER Current - 64D
Potential - 86B

Tenure:
Freehold

What3words:
///promising.local.tank



For more information

01489 570019
www.sbk4homes.com