

25 Murray Road, Ecclesall
Sheffield

Guide Price £315,000

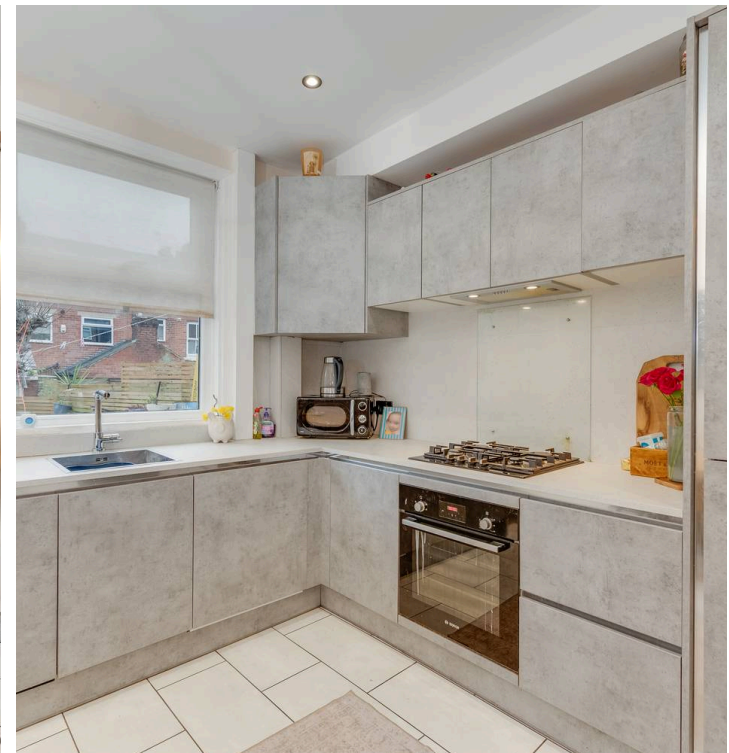
25 Murray Road

Ecclesall, Sheffield

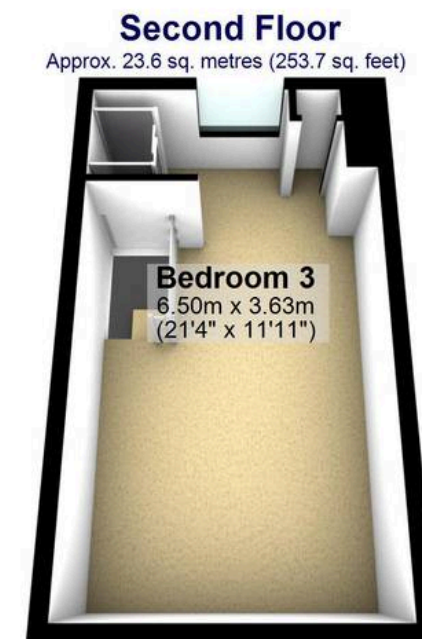
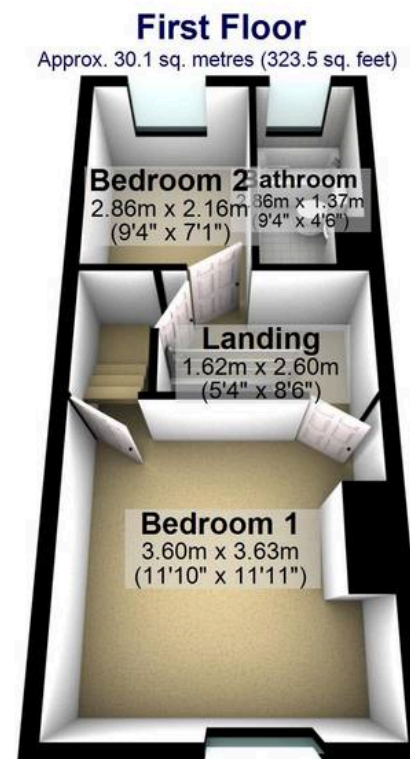
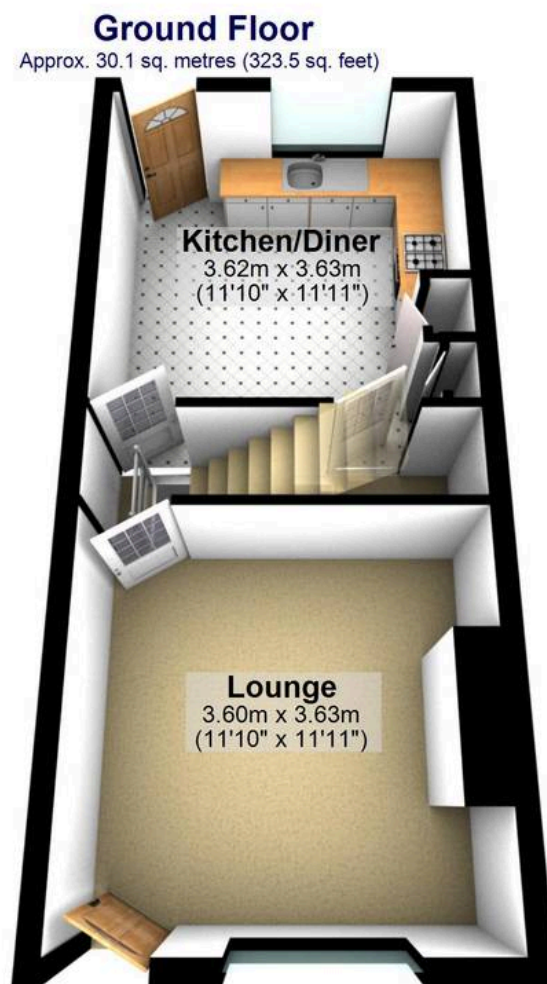
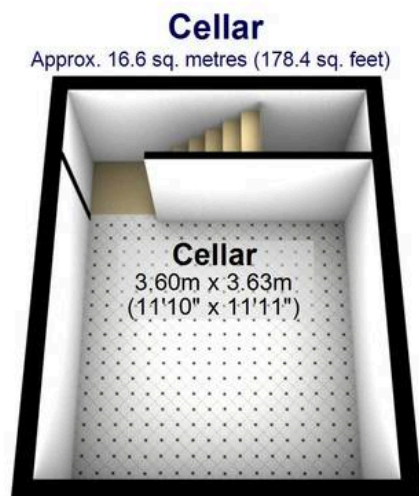
This stunning three bedroom mid Victorian terrace home offers a superb blend of period character and contemporary style, having been beautifully finished internally throughout by the current vendors with no expense spared. Arranged over three floors, the property provides super spacious and light accommodation totalling an impressive 1,079 square feet, making it an ideal choice for professional couples, first time buyers, or young families seeking a move-in ready home. Upon entering, you are welcomed by a bright and inviting hallway lounge, featuring contemporary decorative touches and ample natural light. The separate newly installed fitted, dining/kitchen is perfect for entertaining and allows direct garden access. Upstairs, the first floor accommodates two well-sized bedrooms, each beautifully presented and offering flexibility for use as guest rooms, children's bedrooms, or home offices.

Council Tax band: B Tenure: Freehold

- STUNNING THREE BEDROOM MID VICTORIAN TERRACE HOME
- BEAUTIFULLY FINISHED INTERNALLY THROUGHOUT BY THE CURRENT VENDORS WITH NO EXPENSE SPARED
- THREE FLOORS OF SUPER SPACIOUS AND LIGHT ACCOMMODATION TOTALLING AN IMPRESSIVE 1,079 SQ FEET
- MASTER LOFT BEDROOM WITH CLEVERLY DESIGNED EN-SUITE SHOWER
- OFSTED RATED EXCELLENT SCHOOLING CATCHMENTS INCLUDING BOTH GREYSTONES JUNIORS AND HIGH STORRS SECONDARY







Total area: approx. 100.3 sq. metres (1079.1 sq. feet)

All measurements are approximate
Plan produced using PlanUp.

25 Murray Road


WHITEHORNES
Buy. Sell. Let. Relax!

0114 268 8533
info@whitehornes.com
www.whitehornes.com