



VICTORIA WAY, SE7

£450,000

Flat
Two bedrooms
One bathroom
Chain free
Private garden
Energy rating: C

@marshandparsons
marshandparsons.co.uk

MARSH &
PARSONS



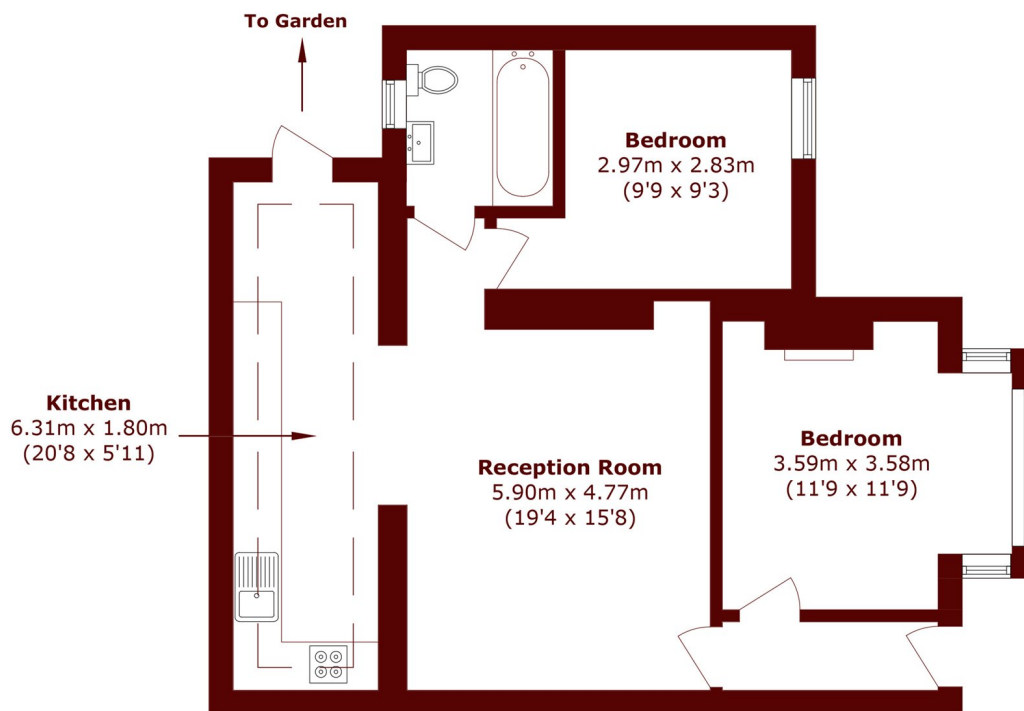
ABOUT THE PROPERTY

This Victorian end of terrace conversion flat offers two double bedrooms and has been modernised throughout, featuring a large open plan kitchen and living space that looks onto its own private garden. It is a unusually spacious flat that is offered chain free.

Ideally located just a short walk from Charlton station, it also benefits from easy bus links to Greenwich, Blackheath, North Greenwich, and Woolwich (Elizabeth Line). Charlton Retail Park is nearby, which offers a wide range of shops, cafés, and restaurants.



STEP INSIDE VICTORIA WAY



Total Area (approx.): 61.9 sq. m (666.2 sq. ft)

Charlton
020 8293 0454

Energy Rating: C We aim to make our particulars both accurate and reliable. However, they are not guaranteed; nor do they form part of an offer or contract. If you require clarification on any points then please contact us, especially if you're traveling some distance to view. Please note that appliances and heating systems have not been tested and therefore no warranties can be given as to their good working order

**MARSH &
PARSONS**