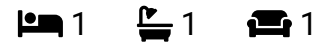


## 8, Lyall Chambers Broadway,

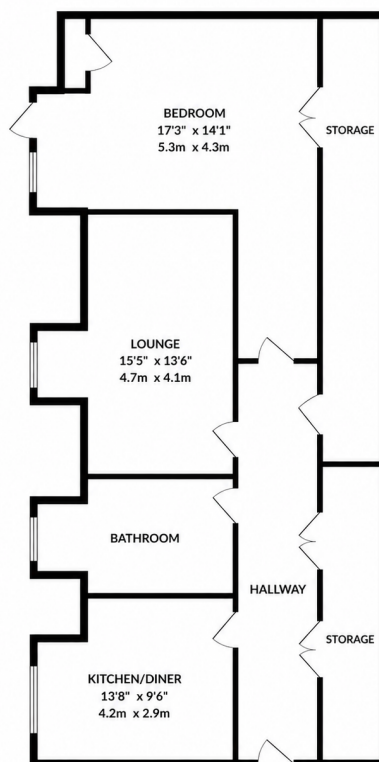
Guide Price £210,000



**CHAIN FREE** – A truly unique and exceptionally spacious top floor apartment set within an attractive character building in the very heart of Letchworth Garden City.

## Key Features

- Must see video tour
- Exceptionally spacious top floor apartment
- Excellent storage throughout the apartment
- Permit parking space to the rear of the property
- Long lease remaining with no ground rent
- Chain Free
- Separate kitchen/diner
- Character building within the historic Lyall Chambers development
- Prime central Letchworth Garden City location moments from the station
- Bright and spacious lounge ideal for entertaining



Whilst every attempt has been made to ensure the accuracy of the floorplan contained here, measurements of doors, windows, rooms and any other items are approximate and no responsibility is taken for any error, omission or mis-statement. This plan is for illustrative purposes only and should be used as such by any prospective purchaser. The services, systems and appliances shown have not been tested and no guarantee as to their operability or efficiency can be given.  
Made with Metropix ©2025