



**Guide Price**  
**£170,000**

**Leasehold**

1x  1x  1x 

**Wallis Place, Hart  
Street, Maidstone, Kent  
ME16**

**OVER 60?**

Secure this property  
for up to **59% less!**

*Wards*  
Helping you move forwards



## Main features

- 2nd floor purpose built flat
- Immaculately presented with modern decor
- Walking distance to Maidstone town centre
- Allocated parking for 1 car, long lease
- Perfect for first time buyers and investors alike

## Accommodation

### SECOND FLOOR

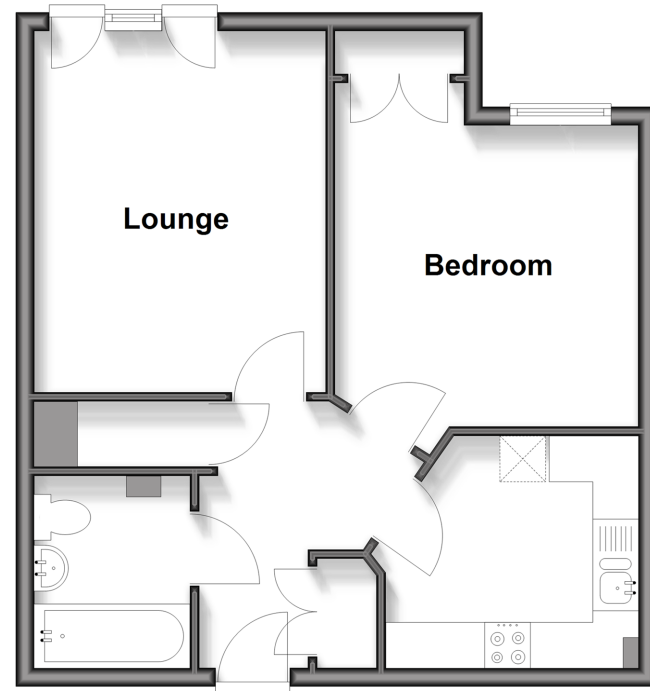
- Hallway
- Lounge: 13'4 x 10'4 (4.07m x 3.15m)
- Kitchen: 10'3 x 8'5 (3.13m x 2.57m)
- Bedroom : 12'9 x 10'7 (3.89m x 3.23m)
- Bathroom

### OUTSIDE

- Communal Areas
- Allocated Parking Space

## Second Floor

Approx. 44.1 sq. metres (474.3 sq. feet)



Call Maidstone - 01622 683737 ■ [wardsofkent.co.uk](http://wardsofkent.co.uk)

■ Legal advice should be taken to verify fixtures/fittings, planning, alterations and/or lease details  
 ■ Through a Homewise Home For Life Plan people aged 60+ can secure this property for up to 50% less, by purchasing a Lifetime Lease.

■ Appliances & services are untested, dimensions are approximate and floor plans are not to scale



13159181/20251029/TB/TB