



## Midmoor Road, SW12

£2,800 Per calendar month

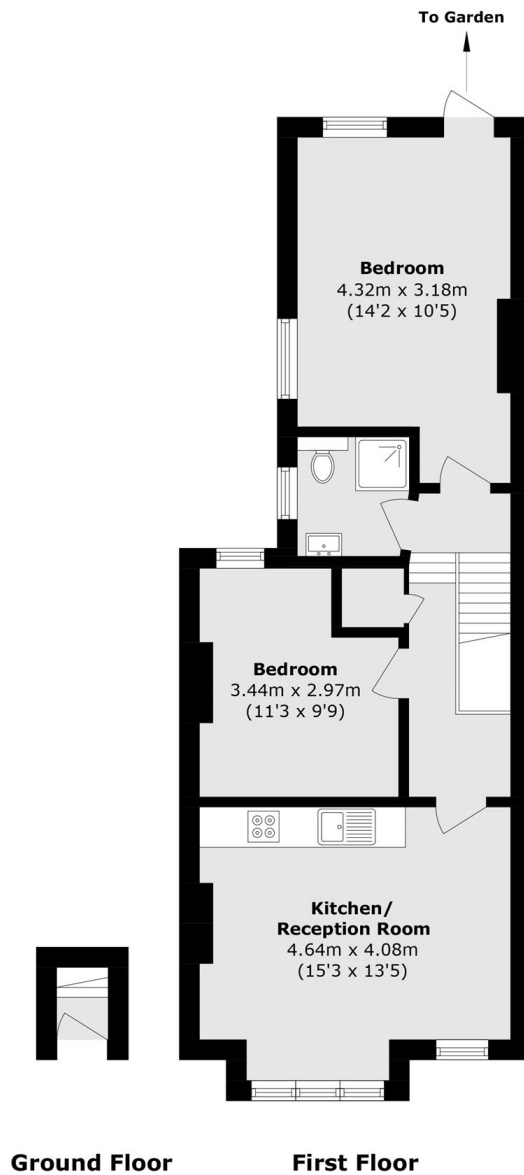
Set on the first floor this two bedroom flat has been recently refurbished throughout. Offering a spacious open plan reception room with a large bay window, wooden flooring and a modern kitchen.

Midmoor Road is a pretty residential street within the Hyde Farm Estate. Situated on the doorstep of Tooting Bec Common and close to the many shops, restaurants, bars and leisure facilities of central Balham. Also nearby Balham overground/underground.

### Features

- Two Double Bedrooms
- Open Plan Reception
- Modern Kitchen
- Recently Refurbished
- Wooden Flooring Throughout
- Private Garden

# Midmoor Road, LONDON, SW12



Total area (approx): 55.1 sq. m (593.0 sq. ft)