



16 Lavender Court, Westhoughton
£130,000

Miller Metcalfe
Every step of the way

16 Lavender Court

Westhoughton, Bolton

OFFERED FOR SALE WITH NO ONWARD CHAINTWO BEDROOMS WITH EN SUITE TO MASTER BEDROOM***COMMUNAL GARDENS AND PARKING***

Located on this highly sought after residential development, close to local amenities, transport connections, and walking distance to Daisy Hill train station. This second floor apartment has well kept communal gardens and allocated parking. Viewings are highly recommended.

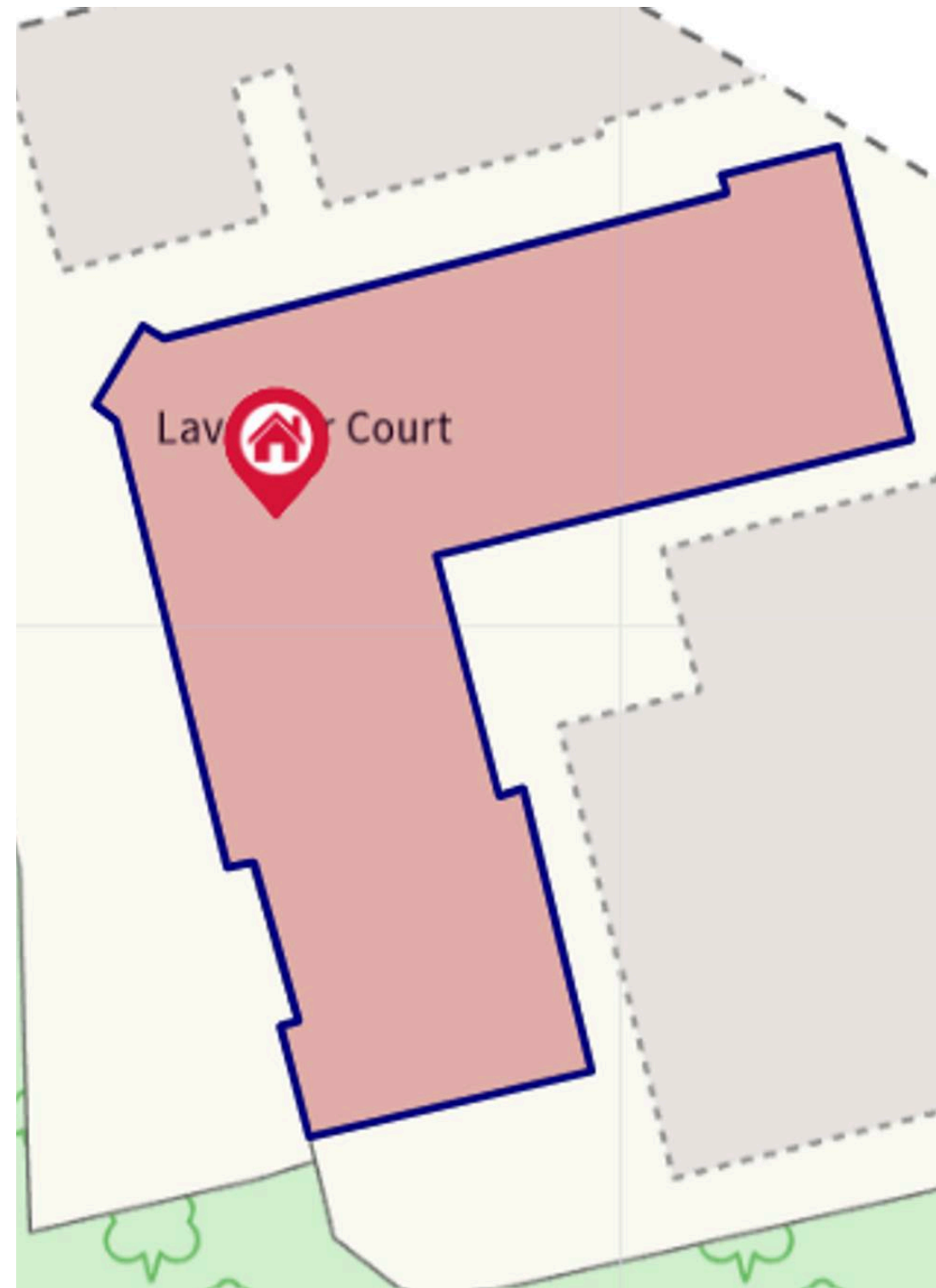
Accommodation briefly comprising an entrance hallway with storage, modern open plan lounge/ modern fitted kitchen. Two double bedrooms with en suite shower room to master bedroom. Three piece family bathroom suite. There are communal gardens with allocated and visitor parking.

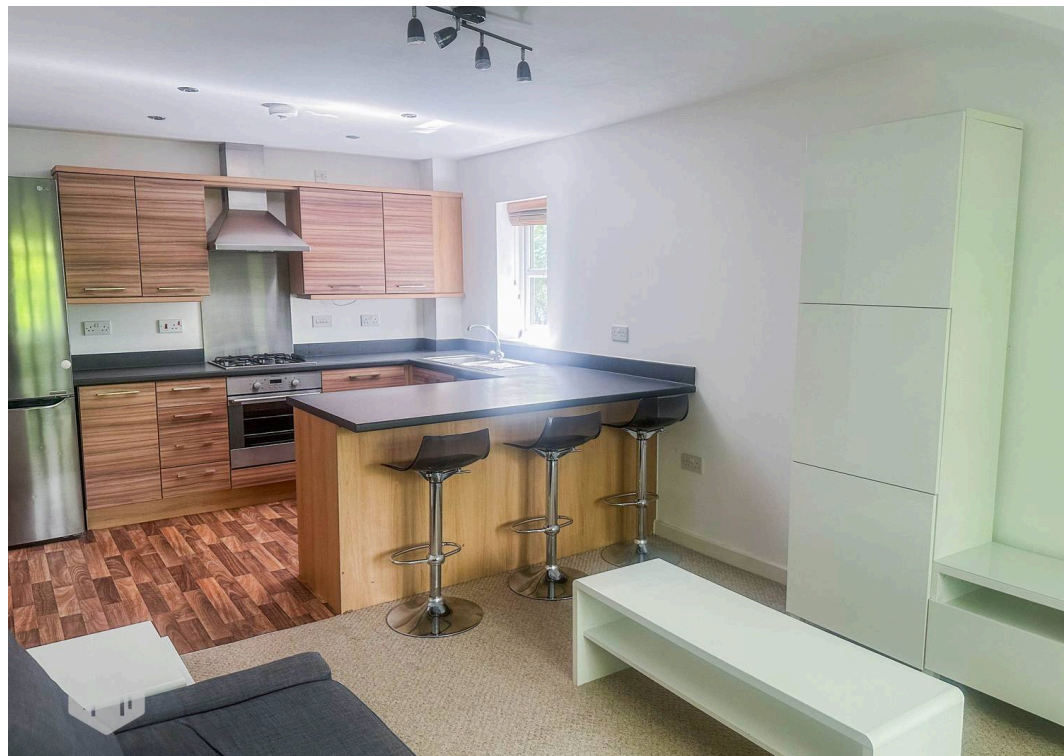
Council Tax band: B

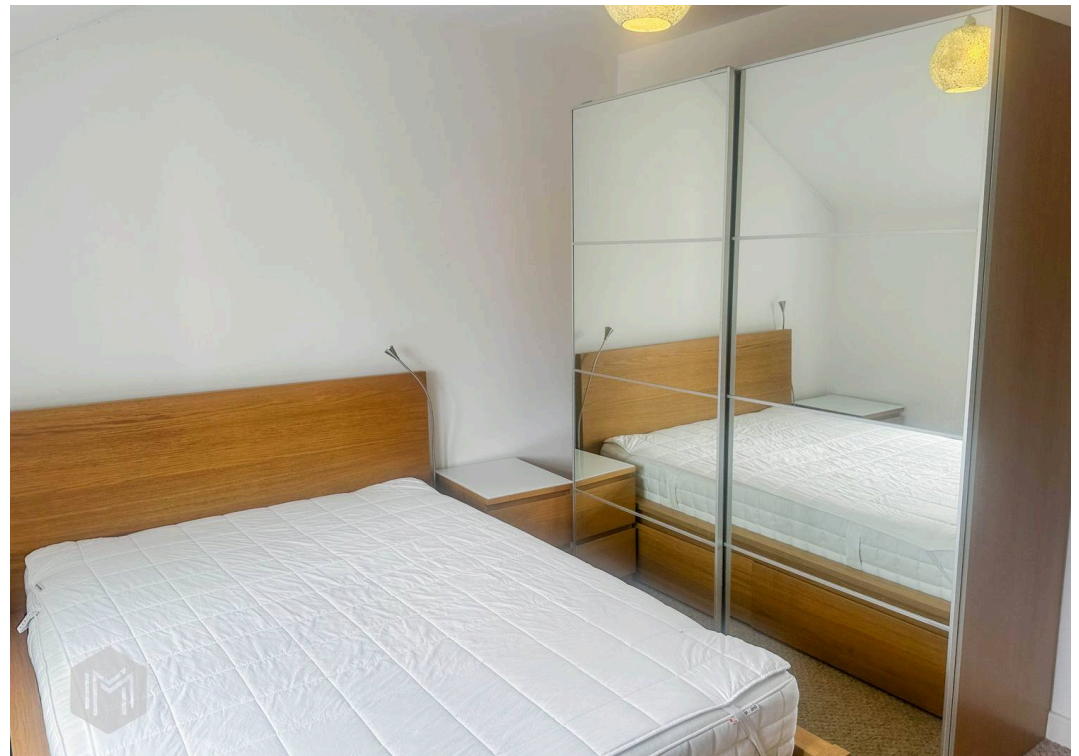
Tenure: Leasehold

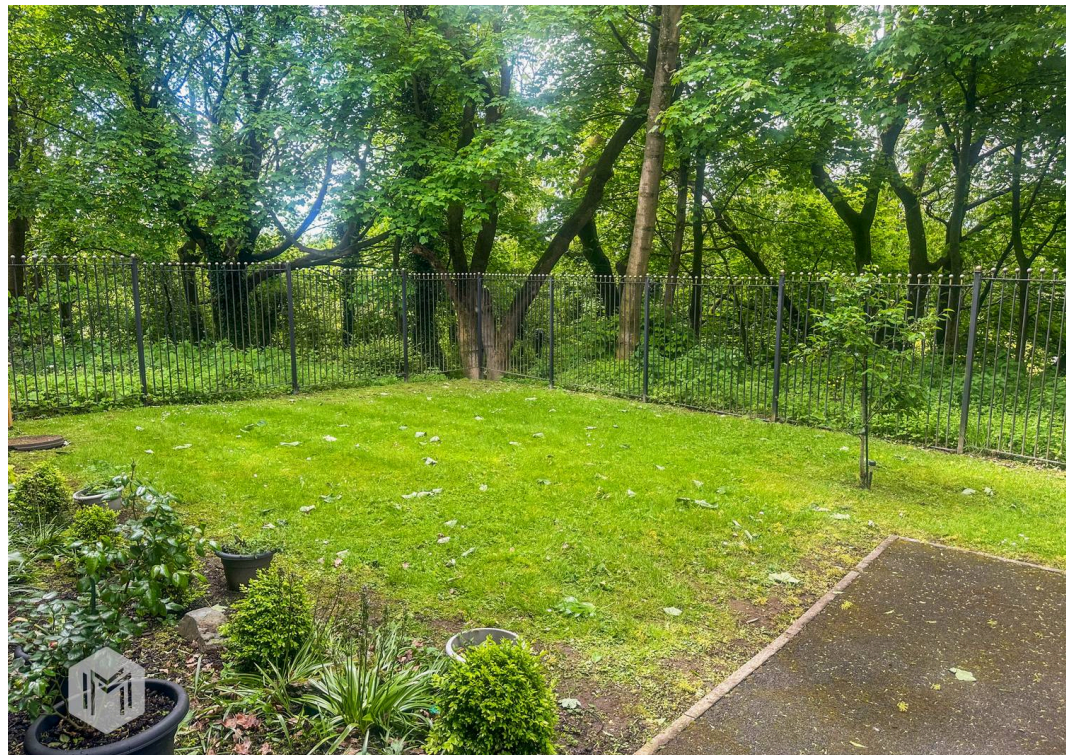
EPC Energy Efficiency Rating: C

EPC Environmental Impact Rating:

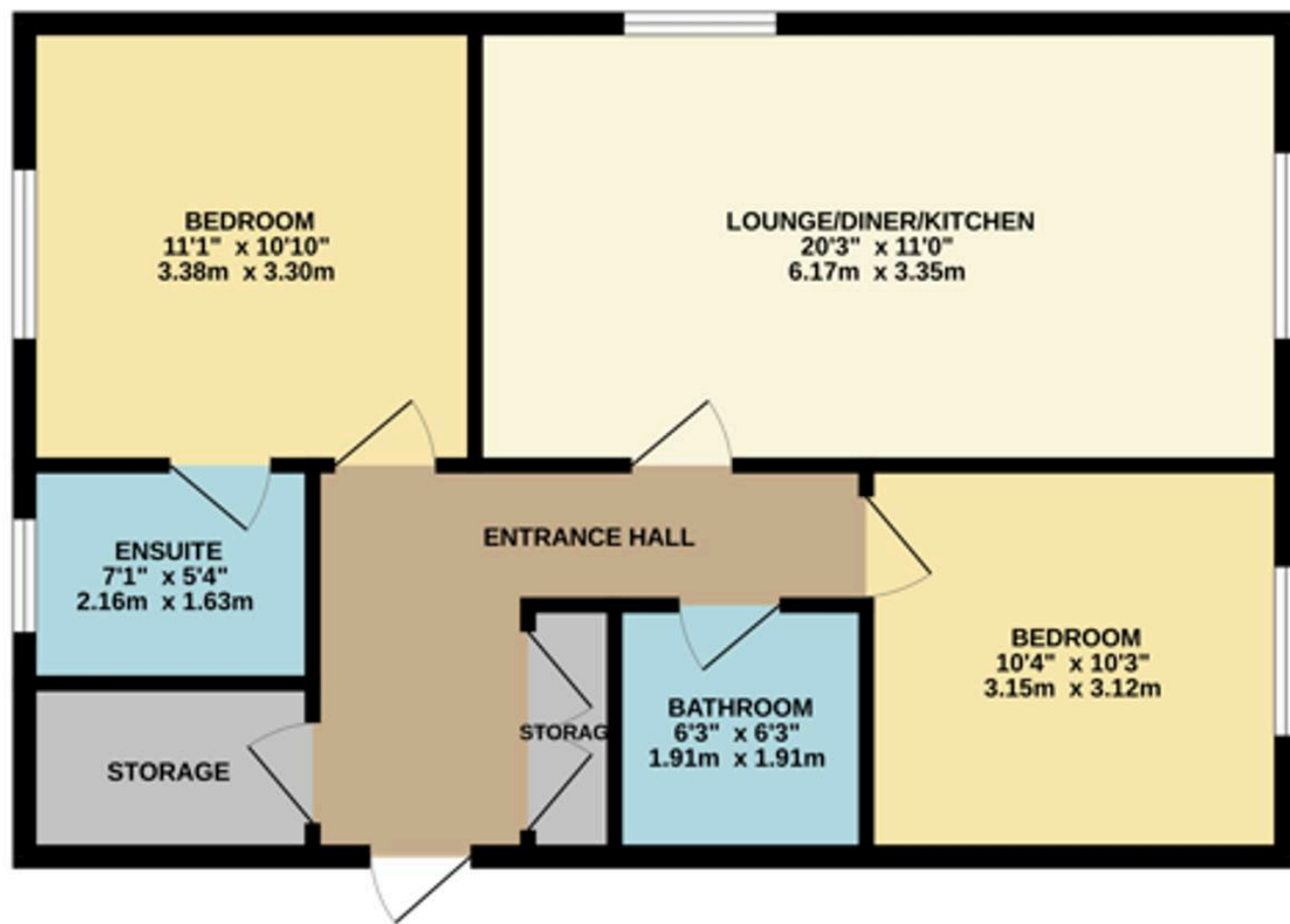








GROUND FLOOR
649 sq.ft. (60.3 sq.m.) approx.



TOTAL FLOOR AREA : 649 sq.ft. (60.3 sq.m.) approx.

Whilst every attempt has been made to ensure the accuracy of the floorplan contained here, measurements of doors, windows, rooms and any other items are approximate and no responsibility is taken for any error, omission or mis-statement. This plan is for illustrative purposes only and should be used as such by any prospective purchaser. The services, systems and appliances shown have not been tested and no guarantee as to their operability or efficiency can be given.
Made with letsupp ©2025



Miller Metcalfe Bolton

Miller Metcalfe, 2-10 Bradshawgate - BL1 1DG

01204 535353 • bolton@millermetcalfe.co.uk • millermetcalfe.co.uk/

Miller Metcalfe
Every step of the way