



# Castles

ASKING PRICE

**£475,000** Leasehold  
**Stanmore Road**

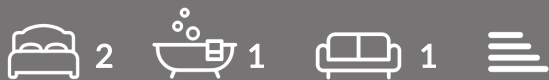
London, N15 3PS



## PROPERTY SUMMARY

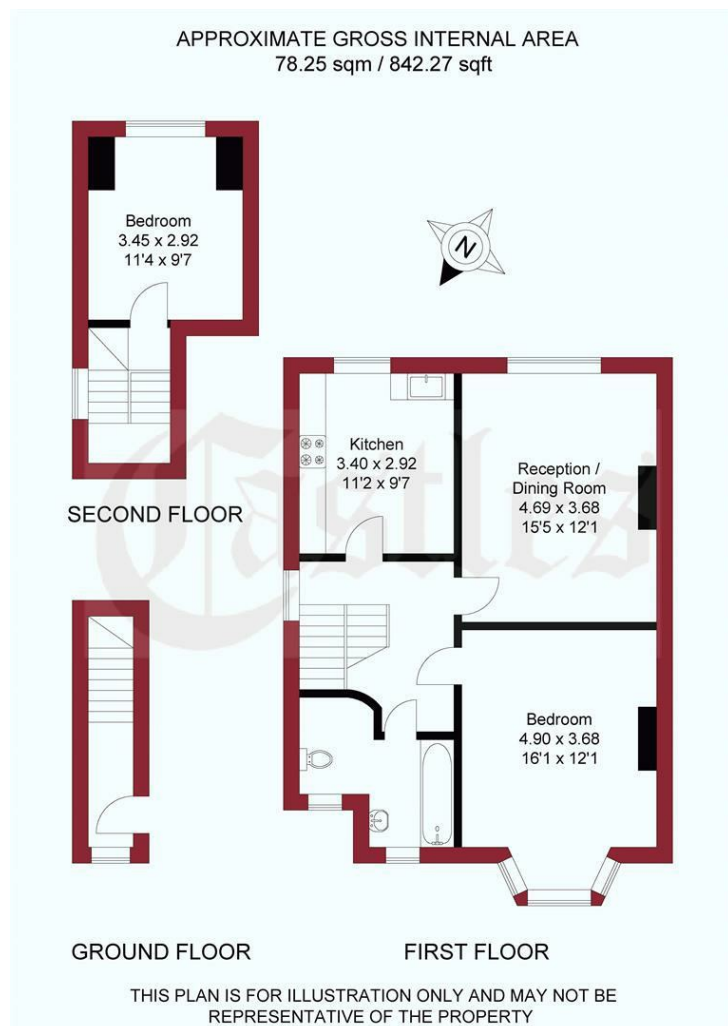
Elegantly arranged over two expansive floors, this stunning two-bedroom conversion spans over 840 sq ft of beautifully presented living space. Recently refurbished to an exceptional standard, the property boasts a sleek, contemporary kitchen/breakfast room, a bright and spacious separate reception room, and a stylish three-piece bathroom. Combining modern finishes with generous proportions, this home offers both comfort and sophistication in equal measure.

Ideally located just moments from the vibrant local amenities, with easy access to shops, cafes, and transport links. Both Turnpike Lane and Wood Green Stations are also within close proximity. Don't miss the opportunity to make this your new home. Contact us today to arrange a viewing!

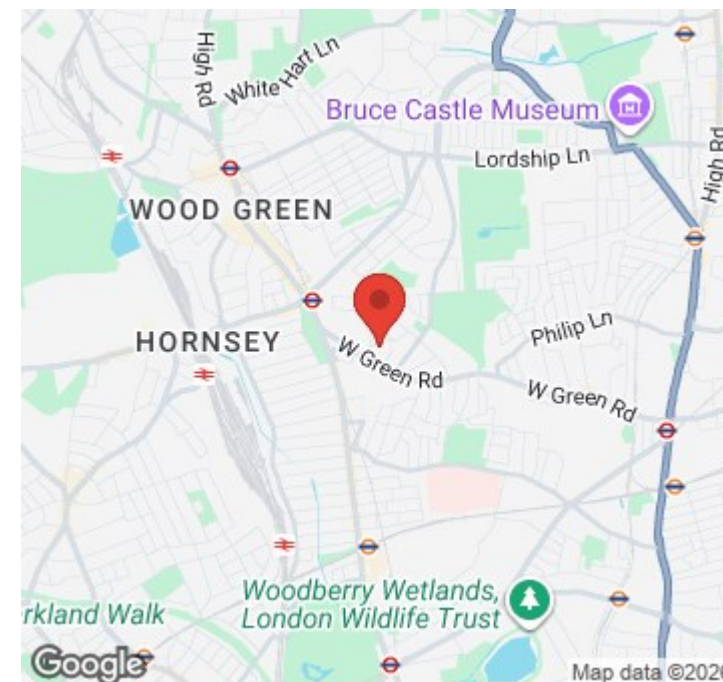
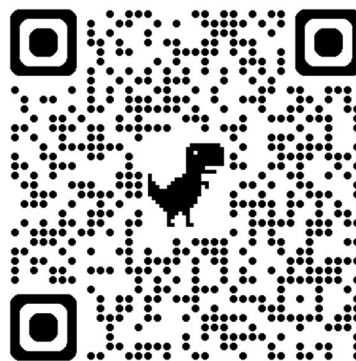








For a guide to the area  
please scan this code for  
more information



Flat - First Floor

Leasehold

**Council Tax Band: C**

**Lease Remaining: TBC**

**Service Charge: N/A**

**Ground Rent: N/A**

Agents Note: Whilst every care has been taken to prepare these particulars, they are for guidance purposes only. All measurements are approximate and are for general guidance purposes only and whilst every care has been taken to ensure their accuracy, they should not be relied upon and potential buyers/tenants are advised to recheck the measurements



#### OFFICE ADDRESS

78 Green Lanes  
Palmers Green  
London  
N13 6BE

#### OFFICE DETAILS

020 8888 6081

[www.castles.london](http://www.castles.london)

Energy Efficiency Rating		Current	Potential
Very energy efficient - lower running costs			
(92-101)	A		
(81-91)	B		
(69-80)	C		
(55-68)	D		
(39-54)	E		
(21-38)	F		
(1-20)	G		
Not energy efficient - higher running costs			
England & Wales		EU Directive 2002/91/EC	