



The Willows Andrew Carr Farm, Oughtibridge, Sheffield S35 8QD



Lettings

The Willows Andrew Carr

Oughtibridge

Per Month

£2,500 Per Month

Set within a sprawling acre of land in a truly picturesque setting, The Willows boasts breathtaking countryside views that will take your breath away. Imagine waking up to the tranquil beauty of nature right outside your window, offering a peaceful and idyllic retreat. The unique character adds a wonderful touch of charm and nostalgia to the living space, making it a truly special place to call your own.

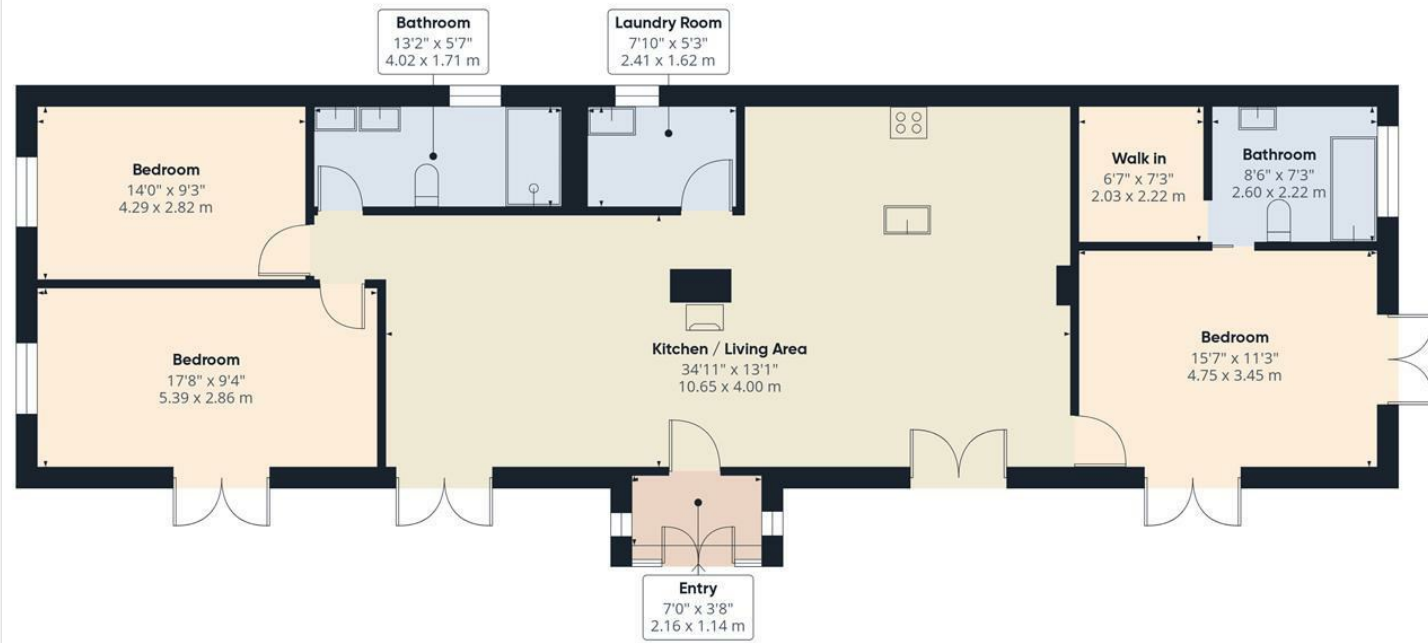
Securely situated within an exclusive electric gated community, the property perfectly balances rural seclusion with everyday convenience. Residents benefit from easy access to local amenities and delightful open countryside, as well as falling within the highly sought after catchment areas for Oughtibridge Primary School and Bradfield Secondary.

High quality external and internal fit out: Large open plan living dining kitchen with calacatta gold work surfaces, large breakfast island and extensive range of appliances. Utility room. Master bedroom with ensuite and walk in wardrobe, a further two double bedrooms and bathroom with three piece white suite and shower over. Outside - surrounding lawned gardens and patio enjoying stunning views.

UNFURNISHED. Restrictions: No smokers. We are waiting on the Energy Efficiency Rating. Council Tax Band - F







Approximate total area^m
1312 ft²
122.1 m²

(1) Excluding balconies and terraces

Calculations reference the RICS IPMS 3C standard. Measurements are approximate and not to scale. This floor plan is intended for illustration only.

GIRAFFE360

While we endeavour to make our sales particulars fair, accurate and reliable, they are only a general guide to the property and, accordingly, if there is any point, which is of particular importance to you, please contact the relevant office. The Agents have not tested any apparatus, equipment, fittings or services and so cannot verify they are in working order. The buyer is advised to obtain verification. Please note all the measurement details are approximate and should not be relied upon as exact. All plans, floor plans and maps are for guidance purposes only and are not to scale. Under no circumstances should they be relied upon as exact or for use in planning carpets and other such fixtures, fittings or furnishings. YOUR HOME IS AT RISK IF YOU DO NOT KEEP UP REPAYMENTS ON A MORTGAGE OR OTHER LOAN SECURED ON IT. 'A Life Assurance policy may be requested.' 'Written Quotations of credit terms available on request.'

Banner Cross
T: 0114 268 3241
E: bannercross@saxtonmee.co.uk
www.saxtonmee.co.uk

Hathersage
T: 01433 650009
E: hathersage@saxtonmee.co.uk

Bakewell
T: 01629 815307
E: bakewell@saxtonmee.co.uk

Matlock
T: 01629 828250
E: matlock@saxtonmee.co.uk