



Judd Street

London, WC1H

Asking Price £550,000

Elegant one-bedroom apartment in Bloomsbury with stylish interiors, bespoke storage, and private patio. Perfectly positioned between King's Cross and Russell Square with UCL at your doorstep.

CHESTERTONS



Judd Street

London, WC1H

- Period Property
- Low Service Charge
- Transport Link Nearby
- University College of London around the corner

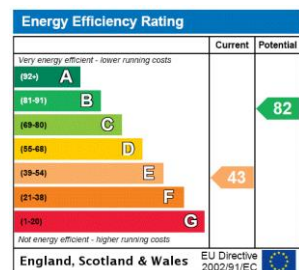


Stylish One-Bedroom Apartment in Prime Bloomsbury Location

Nestled in the heart of Bloomsbury on historic Judd Street, this immaculately presented lower ground floor apartment offers contemporary living in one of London's most culturally rich neighbourhoods. At 488 square feet (45.3 sq m), this beautifully designed one-bedroom home seamlessly blends period charm with modern sophistication.

Step into a bright reception room featuring elegant herringbone wood flooring, custom-built storage solutions, and generous ceiling heights. The sleek kitchen boasts high-specification appliances,

- Tenure:** Leasehold 112 years 2 months
- Service Charge:** £1370 (as advised by vendor)
- Ground Rent:** £250 (as advised by vendor)
- Local Authority:** Camden
- Council Tax Band:** D

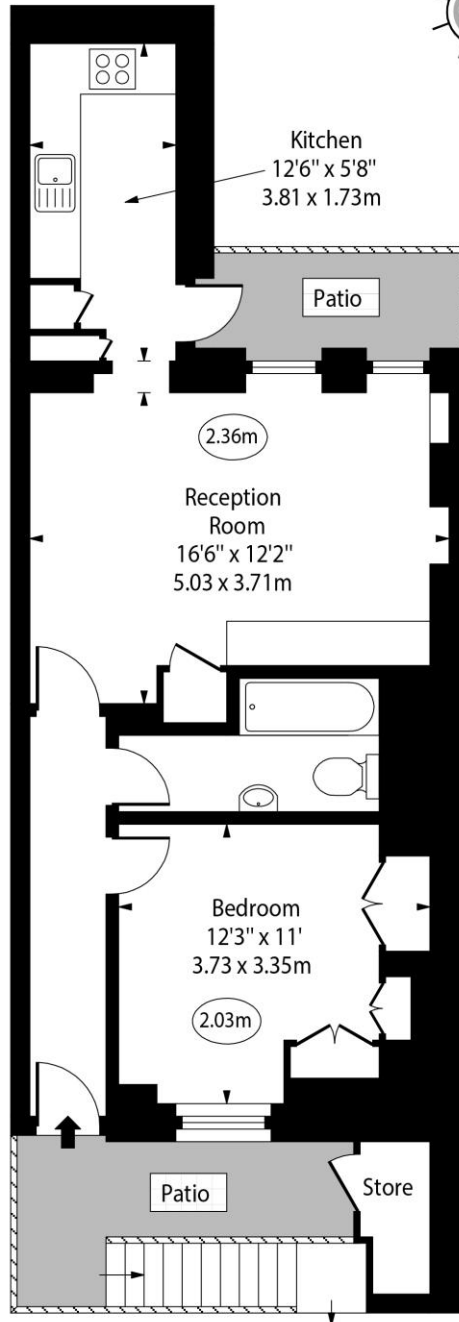


Chestertons Covent Garden Sales

196 Shaftesbury Avenue
London
WC2H 8JF
coventgarden@chestertons.co.uk
020 3040 8300
chestertons.co.uk

Judd Street

○ - Ceiling Height



Lower Ground Floor

Approx Gross Internal Area 520 Sq Ft - 48.31 Sq M

For Illustration Purposes Only - Not To Scale

www.goldlens.co.uk

Ref. No. 027489K

