



Pont Street  
Knightsbridge, SW1X

CHESTERTONS





A beautifully presented and spacious duplex apartment of approximately 904 sq ft, set within an impressive period red-brick building ideally positioned between Sloane Street and Brompton Road.

This bright and stylish property features contemporary décor and wood flooring throughout. The accommodation comprises a generous open-plan kitchen and reception area, a well-proportioned double bedroom with built-in wardrobes, and a modern bathroom suite.

- Wood flooring
- Duplex apartment
- Located moments from Sloane Street and Harrods
- Spacious reception with high ceiling and large bay window

### £4,000 pcm

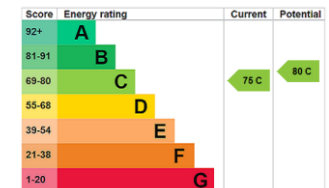
Additional tenant charges apply (fees apply to non-AST tenancies only)

Tenancy Agreement Fee: £300

References per Tenant/Guarantor: £60

Inventory check (approx. £100 – £250 inc. VAT)

[chestertons.co.uk/property-to-rent/applicable-fees](http://chestertons.co.uk/property-to-rent/applicable-fees)



**Minimum Term:** 12 months  
**Deposit Required:** 5 weeks  
**Local Authority:** Royal Borough of Kensington & Chelsea  
**Council Tax Band:** G  
**EPC Rating:** C  
**Part Furnished**

### Chestertons Knightsbridge & Belgravia Lettings

31 Lowndes Street  
 London  
 SW1X 9HX

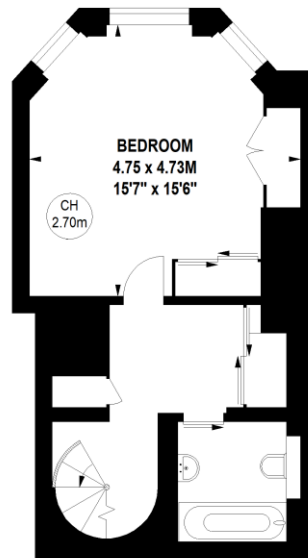
[knightsbridgelettingsusers@chestertons.co.uk](mailto:knightsbridgelettingsusers@chestertons.co.uk)  
 02072353530  
[chestertons.co.uk](http://chestertons.co.uk)

# Pont Street, SW1X

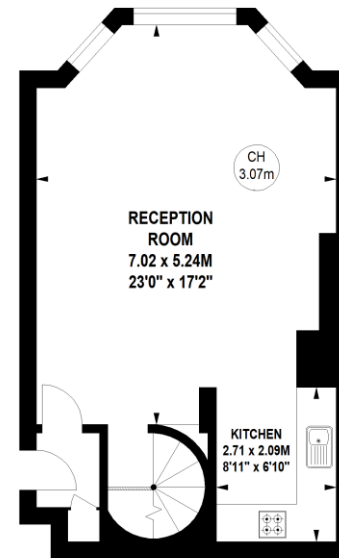
Approximate gross internal area

83.98 sq m / 904 sq ft

Key :  
CH - Ceiling Height



Lower Ground Floor



Raised Ground Floor

Not to scale, for guidance only and must not be relied upon as a statement of fact.  
All measurements and areas are approximate only

